

Progesterone Receptor Monoclonal Antibody (SP2)

Product Details	
Size	500 µL
Species Reactivity	Human, Rat
Published Species	Dog, Mouse, Human
Host/Isotope	Rabbit / IgG
Class	Monoclonal
Type	Antibody
Clone	SP2
Conjugate	Unconjugated
Immunogen	Recombinant protein encoding human progesterone receptor 412-526 aa
Form	Liquid
Concentration	0.084 mg/mL
Purification	Protein A
Storage buffer	PBS, pH 7.6, with 1% BSA
Contains	0.1% sodium azide
Storage Conditions	-20° C, Avoid Freeze/Thaw Cycles, store in dark
RRID	AB_10980030

Applications	Tested Dilution	Publications
Flow Cytometry (Flow)	1:100 - 1:220	-
Immunocytochemistry (ICC)	1:100	2 Publications
Immunofluorescence (IF)	1:100	-
Immunohistochemistry (Paraffin) (IHC (P))	1:400	9 Publications
Western Blot (WB)	1:1000-1:2000	11 Publications
Immunohistochemistry (IHC)	-	96 Publications
Miscellaneous PubMed (Misc)	-	5 Publications

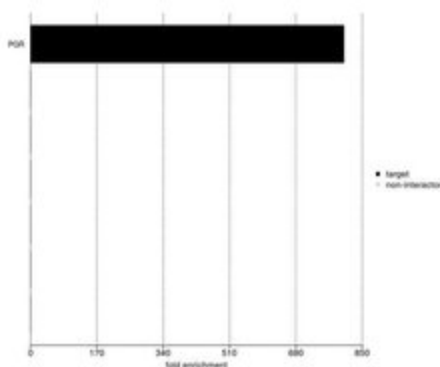
Product Specific Information

MA5-14505 targets Progesterone Receptor in IHC (P) and WB applications and shows reactivity with Human samples.

MA5-14505 has been successfully used in western blotting, immunofluorescence, and immunohistochemistry analysis of Progesterone Receptor in human and mouse samples.

The MA5-14505 immunogen is recombinant protein encoding human progesterone receptor 412-526 aa.

Advanced Verification Data

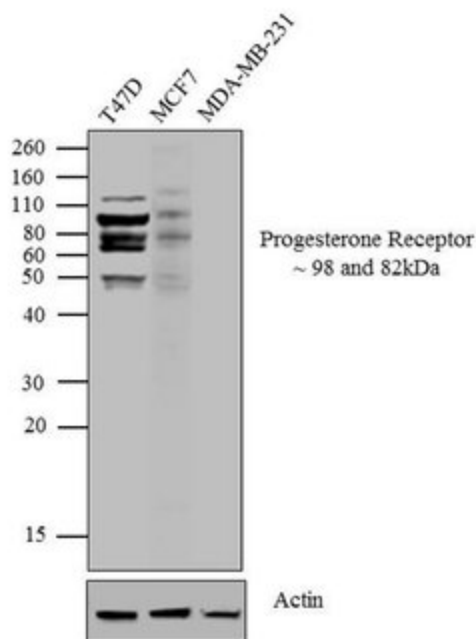


Progesterone Receptor Antibody (MA5-14505)

IP-MS enrichment of PGR (LFQ intensity): PGR was enriched 803-fold from MCF7 lysate compared to background proteins, using the optimized IP-MS workflow with Pierce MS-Compatible Magnetic IP Kit protein A/G (Product # 90409) and PGR antibody (Product # MA5-14505). The STRING database (www.string-db.org) was used to identify the protein interactor list. See more information on IP-MS verification of antibody selectivity. IP-MS validation info.

Progesterone Receptor Antibody (MA5-14505)

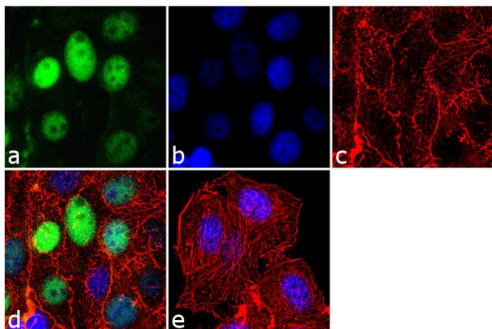
Antibody specificity was demonstrated by detection of relative expression of the target protein across cell models owing to their inherent genetic constitution. Differential basal expression of Progesterone Receptor in breast cancer cell lines T-47D and MCF-7 (positive for Progesterone Receptor) and MDA-MB-231 (Progesterone Receptor negative; Neve RM et al., 2006) was observed by western analysis using anti-Progesterone Receptor monoclonal antibody (catalog # MA5-14505). Relative expression validation info.



Product Images For Progesterone Receptor Monoclonal Antibody (SP2)

Progesterone Receptor Antibody (MA5-14505) in IF

Immunofluorescence analysis of Progesterone Receptor was done on 70% confluent log phase MCF-7 cells. The cells were fixed with 4% paraformaldehyde for 10 minutes, permeabilized with 0.1% Triton™ X-100 for 10 minutes, and blocked with 1% BSA for 1 hour at room temperature. The cells were labeled with Progesterone Receptor (SP2) Rabbit Polyclonal Antibody (Product # MA5-14505) at 2 µg/mL in 0.1% BSA and incubated for 3 hours at room temperature and then labeled with Goat anti-Rabbit IgG (H+L) Superclonal™ Secondary Antibody, Alexa Fluor® 488 conjugate (Product # A27034) at a dilution of 1:2000 for 45 minutes at room temperature (Panel a: green). Nuclei (Panel b: blue) were stained with SlowFade® Gold Antifade Mountant with DAPI (Product # S36938). F-actin (Panel c: red) was stained with Alexa Fluor® 555 Rhodamine Phalloidin (Product # R415, 1:300). Panel d is a merged image showing nuclear localization. Panel e is a no primary antibody control. The images were captured at 60X magnification.



123 References

Immunohistochemistry (96)

PloS one

Glandular defects in the mouse uterus with sustained activation of TGF-beta signaling is associated with altered differentiation of endometrial stromal cells and formation of stromal compartment.

"MA5-14505 was used in Immunohistochemistry to study the effect of altered differentiation of endometrial stromal cells and formation of stromal compartment on adenogenic defects."

Authors: Ni N,Gao Y,Fang X,Melgar M,Vincent DF,Lydon JP,Bartholin L,Li Q

Species
Mouse

Dilution
1:50

Year
2019

Nature cell biology

Early lineage segregation of multipotent embryonic mammary gland progenitors.

"MA5-14505 was used in Immunohistochemistry-immunofluorescence to study the timing and mechanisms mediating early lineage segregation of multipotent progenitors during mammary gland development."

Authors: Wuidart A,Sifrim A,Fioramonti M,Matsumura S,Brisebarre A,Brown D,Centonze A,Dannau A,Dubois C,Van Keymeulen A,Voet T,Blanpain C

Species
Mouse

Dilution
1:250

Year
2018

[View more IHC references on thermofisher.com](#)

Immunohistochemistry (Paraffin) (9)

PloS one

Integrative Analyses of Uterine Transcriptome and MicroRNAome Reveal Compromised LIF-STAT3 Signaling and Progesterone Response in the Endometrium of Patients with Recurrent/Repeated Implantation Failure (RIF).

"MA514505 was used in immunohistochemistry - paraffin section to describe the uterine transcriptome of patients with recurrent/repeated implantation failure"

Authors: Choi Y, Kim HR, Lim EJ, Park M, Yoon JA, Kim YS, Kim EK, Shin JE, Kim JH, Kwon H, Song H, Choi DH

Species
Human

Dilution
1:200

Year
2017

Oncogenesis

Constitutively activated PI3K accelerates tumor initiation and modifies histopathology of breast cancer.

"MA514505 was used in immunohistochemistry - paraffin section to determine if PIK3CA mutations contribute to tumor initiation"

Authors: Sheen MR, Marotti JD, Allegrezza MJ, Rutkowski M, Conejo-Garcia JR, Fiering S

Species
Mouse

Dilution
Not Cited

Year
2016

[View more IHC \(P\) references on thermofisher.com](#)

More applications with references on thermofisher.com

- Misc (5)
- ICC (2)
- WB (11)

For Research Use Only. Not for use in diagnostic procedures. Not for resale without express authorization. Products are warranted to operate or perform substantially in conformance with published Product specifications in effect at the time of sale, as set forth in the Production documentation, specifications and/or accompanying package inserts ("Documentation"). No claim of suitability for use in applications regulated by FDA is made. The warranty provided herein is valid only when used by properly trained individuals. Unless otherwise stated in the Documentation, this warranty is limited to one year from date of shipment when the Product is subjected to normal, proper and intended usage. This warranty does not extend to anyone other than the Buyer. Any model or sample furnished to Buyer is merely illustrative of the general type and quality of goods and does not represent that any Product will conform to such model or sample. NO OTHER WARRANTIES, EXPRESS OR IMPLIED, ARE GRANTED INCLUDING WITHOUT LIMITATION, IMPLIED WARRANTIES OF MERCHANTABILITY, FITNESS FOR ANY PARTICULAR PURPOSE, OR NON INFRINGEMENT. BUYER'S EXCLUSIVE REMEDY FOR NON-CONFORMING PRODUCTS DURING THE WARRANTY PERIOD IS LIMITED TO REPAIR, REPLACEMENT OF OR REFUND FOR THE NON-CONFORMING PRODUCT(S) AT SELLER'S SOLE OPTION. THERE IS NO OBLIGATION TO REPAIR, REPLACE OR REFUND FOR PRODUCTS AS THE RESULT OF (I) ACCIDENT, DISASTER OR EVENT OF FORCE MAJEURE, (II) MISUSE, FAULT OR NEGLIGENCE OF OR BY BUYER, (III) USE OF THE PRODUCTS IN A MANNER FOR WHICH THEY WERE NOT DESIGNED, OR (IV) IMPROPER STORAGE AND HANDLING OF THE PRODUCTS. Unless otherwise expressly stated on the Product or in the documentation accompanying the Product, the Product is intended for research only and is not to be used for any other purpose, including without limitation, unauthorized commercial uses, in vitro diagnostic uses, ex vivo or in vivo therapeutic uses, or any type of consumption by or application to human or animals.