

# Laminin beta-2/gamma-1 Monoclonal Antibody (A5)

| Product Details    |                                |
|--------------------|--------------------------------|
| Size               | 500 µL                         |
| Species Reactivity | Human, Mouse                   |
| Published Species  | Rat, Mouse, Rhesus monkey      |
| Host/Isotype       | Rat / IgG2a, kappa             |
| Class              | Monoclonal                     |
| Type               | Antibody                       |
| Clone              | A5                             |
| Conjugate          | Unconjugated                   |
| Immunogen          | Murine EHS laminin preparation |
| Form               | Liquid                         |
| Concentration      | 0.2 mg/mL                      |
| Purification       | Protein G                      |
| Storage buffer     | PBS, pH 7.4, with 0.2% BSA     |
| Contains           | 0.09% sodium azide             |
| Storage conditions | 4° C                           |
| RRID               | AB_10986979                    |

| Applications                              | Tested Dilution | Publications    |
|---|-----------------|-----------------|
| Immunohistochemistry (IHC)                | -               | 15 Publications |
| Immunohistochemistry (Paraffin) (IHC (P)) | 2 µg/mL         | -               |
| Immunohistochemistry (Frozen) (IHC (F))   | 2 µg/mL         | -               |
| ELISA (ELISA)                             | -               | 1 Publication   |
| Immunoprecipitation (IP)                  | 2 µg/mL         | -               |

## Product Specific Information

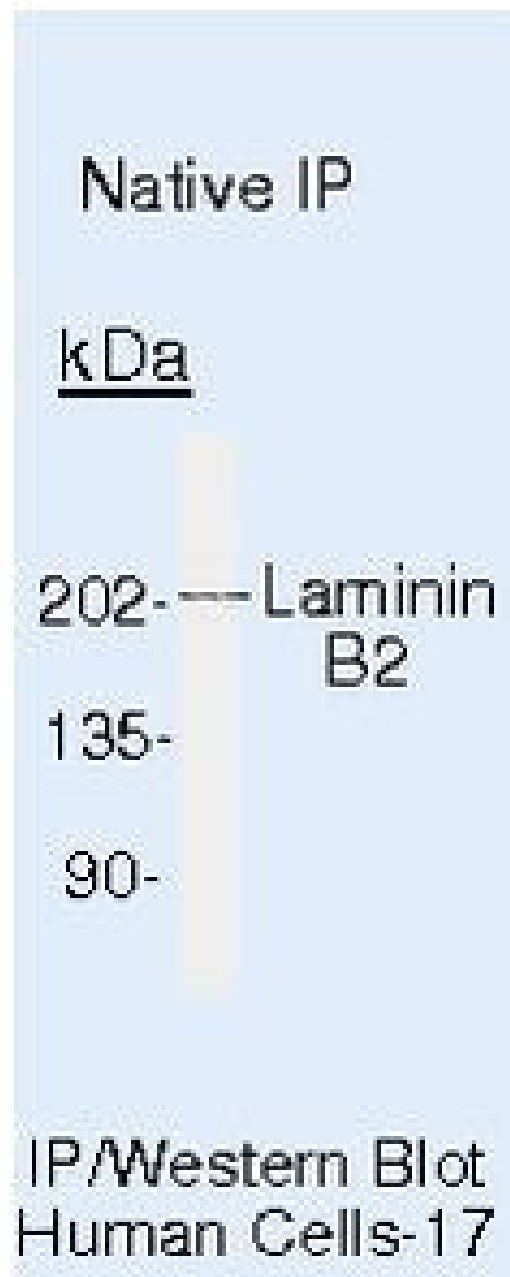
MA5-14649 targets Laminin B2/gamma1 in IF, IHC (P, F), and IP applications and shows reactivity with Human and mouse samples.

The MA5-14649 immunogen is mouse EHS laminin preparation.

Product Images For Laminin beta-2/gamma-1 Monoclonal Antibody (A5)



**Laminin beta-2/gamma-1 Antibody (MA5-14649) in IHC (F)**  
Frozen human tonsil stained with Laminin B2/1 antibody using peroxidase-conjugate and DAB chromogen. Note basement membrane and cell surface staining of blood vessels.



**Laminin beta-2/gamma-1 Antibody (MA5-14649) in IP**  
Immunoprecipitation of Laminin B2/gamma1 using Laminin B2/gamma1 Monoclonal Antibody (Product # MA5-14649) on Native Human LS174T Cells.

## Immunohistochemistry (15)

Journal of physiology and pharmacology : an official journal of the Polish Physiological Society

### Effect of natalizumab treatment on metalloproteinases and their inhibitors in a mouse model of multiple sclerosis.

"MA5-14649 was used in Immunohistochemistry to assess whether natalizumab, a transmigration-inhibiting monoclonal antibody against 41 integrin, influences expression of MMPs and TIMPs in the central nervous system of mice with EAE."

Authors: Pyka-Fosciak G,Lis GJ,Litwin JA

Year  
2020

Species  
Mouse

Dilution  
1:200

FASEB journal : official publication of the Federation of American Societies for Experimental Biology

### Deletion of muscle GRP94 impairs both muscle and body growth by inhibiting local IGF production.

"MA5-14649 was used in immunohistochemistry to study the role of local IGF production in skeletal muscle and body growth using GRP94 knockout mice"

Authors: Barton ER,Park S,James JK,Makarewich CA,Philippou A,Eletto D,Lei H,Brisson B,Ostrovsky O,Li Z,Argon Y

Year  
2012

Species  
Mouse

[View more IHC references on thermofisher.com](#)

## ELISA (1)

Kidney international

### Anti-DNA autoantibodies initiate experimental lupus nephritis by binding directly to the glomerular basement membrane in mice.

"MA5-14649 was used in ELISA to test if direct binding of anti-DNA antibody to the glomerular basement membrane important in experimental lupus nephritis"

Authors: Krishnan MR,Wang C,Marion TN

Year  
2012

## More applications with references on thermofisher.com

For Research Use Only. Not for use in diagnostic procedures. Not for resale without express authorization. Products are warranted to operate or perform substantially in conformance with published Product specifications in effect at the time of sale, as set forth in the Production documentation, specifications and/or accompanying package inserts ("Documentation"). No claim of suitability for use in applications regulated by FDA is made. The warranty provided herein is valid only when used by properly trained individuals. Unless otherwise stated in the Documentation, this warranty is limited to one year from date of shipment when the Product is subjected to normal, proper and intended usage. This warranty does not extend to anyone other than the Buyer. Any model or sample furnished to Buyer is merely illustrative of the general type and quality of goods and does not represent that any Product will conform to such model or sample. NO OTHER WARRANTIES, EXPRESS OR IMPLIED, ARE GRANTED INCLUDING WITHOUT LIMITATION, IMPLIED WARRANTIES OF MERCHANTABILITY, FITNESS FOR ANY PARTICULAR PURPOSE, OR NON INFRINGEMENT. BUYER'S EXCLUSIVE REMEDY FOR NON-CONFORMING PRODUCTS DURING THE WARRANTY PERIOD IS LIMITED TO REPAIR, REPLACEMENT OF OR REFUND FOR THE NON-CONFORMING PRODUCT(S) AT SELLER'S SOLE OPTION. THERE IS NO OBLIGATION TO REPAIR, REPLACE OR REFUND FOR PRODUCTS AS THE RESULT OF (I) ACCIDENT, DISASTER OR EVENT OF FORCE MAJEURE, (II) MISUSE, FAULT OR NEGLIGENCE OF OR BY BUYER, (III) USE OF THE PRODUCTS IN A MANNER FOR WHICH THEY WERE NOT DESIGNED, OR (IV) IMPROPER STORAGE AND HANDLING OF THE PRODUCTS. Unless otherwise expressly stated on the Product or in the documentation accompanying the Product, the Product is intended for research only and is not to be used for any other purpose, including without limitation, unauthorized commercial uses, in vitro diagnostic uses, ex vivo or in vivo therapeutic uses, or any type of consumption by or application to human or animals.