

# AP2 alpha Monoclonal Antibody (R.387.0)

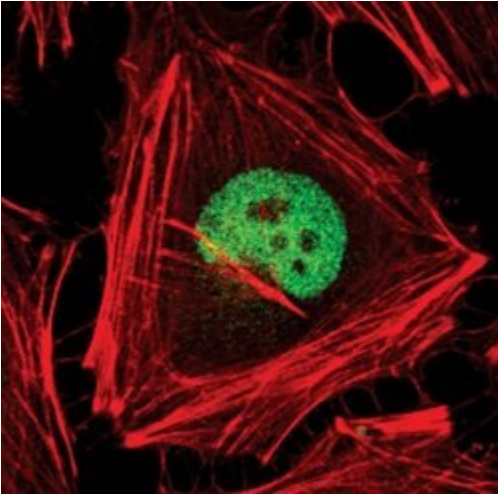
Product Details	
Size	100 µL
Species Reactivity	Human, Mouse, Non-human primate, Rat
Published Species	Human
Host/Isotype	Rabbit / IgG
Class	Monoclonal
Type	Antibody
Clone	R.387.0
Conjugate	Unconjugated
Immunogen	Synthetic peptide corresponding to human AP-2a
Form	Liquid
Purification	Affinity chromatography
Storage buffer	0.01M HEPES, pH 7.5, with 0.15M NaCl, 100µg/mL BSA, 50% glycerol
Contains	<0.02% sodium azide
Storage Conditions	-20°C
RRID	AB_10982796

Applications	Tested Dilution	Publications
Western Blot (WB)	1:1000	1 Publication
Immunocytochemistry (ICC/IF)	1:100	1 Publication

## Product Specific Information

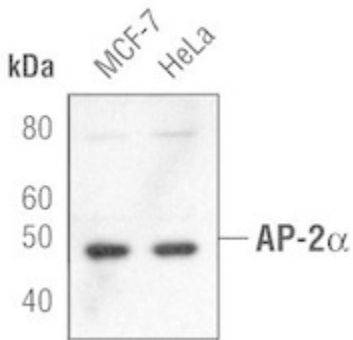
It is not recommended to aliquot this antibody.

## Product Images For AP2 alpha Monoclonal Antibody (R.387.0)



### AP2 alpha Antibody (MA5-14856) in ICC/IF

Immunofluorescent analysis of AP-2-alpha in HeLa cells using an AP-2-alpha monoclonal antibody (Product # MA5-14856) (green). Actin filaments are labeled with a fluorescent red phalloidin.



### AP2 alpha Antibody (MA5-14856) in WB

Western blot analysis of AP-2-alpha in extracts from MCF-7 and HeLa cells using AP-2-alpha monoclonal antibody (Product # MA5-14856).

### Western Blot (1)

BMC urology

#### In vitro and in silico assessment of the effect of WWOX expression on invasiveness pathways associated with AP-2 transcription factors in bladder cancer.

Authors: Kauziska ,Koat D,Kola K,Orzechowska M,Bednarek AK,Puciennik E

**Species**  
Human

**Dilution**  
1:1,000

**Year**  
2021

### Immunocytochemistry (1)

Frontiers in oncology

#### Fragile Gene *WWOX* Guides *TFAP2A/TFAP2C*-Dependent Actions Against Tumor Progression in Grade II Bladder Cancer.

Authors: Koat D,Kauziska ,Puciennik E

**Species**  
Human

**Dilution**  
1:100

**Year**  
2021

For Research Use Only. Not for use in diagnostic procedures. Not for resale without express authorization. Products are warranted to operate or perform substantially in conformance with published Product specifications in effect at the time of sale, as set forth in the Production documentation, specifications and/or accompanying package inserts ("Documentation"). No claim of suitability for use in applications regulated by FDA is made. The warranty provided herein is valid only when used by properly trained individuals. Unless otherwise stated in the Documentation, this warranty is limited to one year from date of shipment when the Product is subjected to normal, proper and intended usage. This warranty does not extend to anyone other than the Buyer. Any model or sample furnished to Buyer is merely illustrative of the general type and quality of goods and does not represent that any Product will conform to such model or sample. NO OTHER WARRANTIES, EXPRESS OR IMPLIED, ARE GRANTED INCLUDING WITHOUT LIMITATION, IMPLIED WARRANTIES OF MERCHANTABILITY, FITNESS FOR ANY PARTICULAR PURPOSE, OR NON INFRINGEMENT. BUYER'S EXCLUSIVE REMEDY FOR NON-CONFORMING PRODUCTS DURING THE WARRANTY PERIOD IS LIMITED TO REPAIR, REPLACEMENT OF OR REFUND FOR THE NON-CONFORMING PRODUCT(S) AT SELLER'S SOLE OPTION. THERE IS NO OBLIGATION TO REPAIR, REPLACE OR REFUND FOR PRODUCTS AS THE RESULT OF (I) ACCIDENT, DISASTER OR EVENT OF FORCE MAJEURE, (II) MISUSE, FAULT OR NEGLIGENCE OF OR BY BUYER, (III) USE OF THE PRODUCTS IN A MANNER FOR WHICH THEY WERE NOT DESIGNED, OR (IV) IMPROPER STORAGE AND HANDLING OF THE PRODUCTS. Unless otherwise expressly stated on the Product or in the documentation accompanying the Product, the Product is intended for research only and is not to be used for any other purpose, including without limitation, unauthorized commercial uses, in vitro diagnostic uses, ex vivo or in vivo therapeutic uses, or any type of consumption by or application to human or animals.