

# LKB1 Monoclonal Antibody (B.593.0)

## Product Details

Size	100 µL
Species Reactivity	Human, Non-human primate
Host/Isotype	Rabbit / IgG
Class	Monoclonal
Type	Antibody
Clone	B.593.0
Conjugate	Unconjugated
Immunogen	Synthetic peptide corresponding to the sequence of human LKB1
Form	Liquid
Purification	Affinity chromatography
Storage buffer	0.01M HEPES, pH 7.5, with 0.15M NaCl, 100µg/mL BSA, 50% glycerol
Contains	<0.02% sodium azide
Storage Conditions	-20°C
RRID	AB_10979314

Applications	Tested Dilution	Publications
Western Blot (WB)	1:1000	-
Immunoprecipitation (IP)	1:100	-

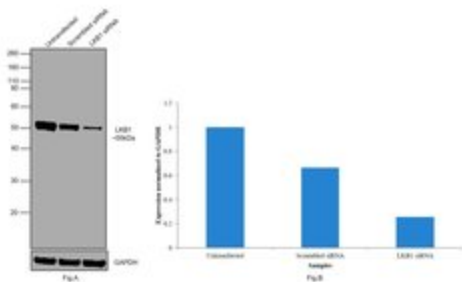
## Product Specific Information

It is not recommended to aliquot this antibody.

## Advanced Verification Data

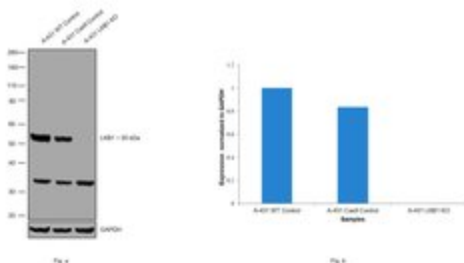
### LKB1 Antibody (MA5-14942)

Antibody specificity was demonstrated by siRNA mediated knockdown of target protein. A-431 cells were transfected with LKB1 siRNA and reduction of signal was observed in Western Blot using LKB1 Monoclonal Antibody (B.593.0) (Product # MA5-14942). Knockdown validation info.



### LKB1 Antibody (MA5-14942)

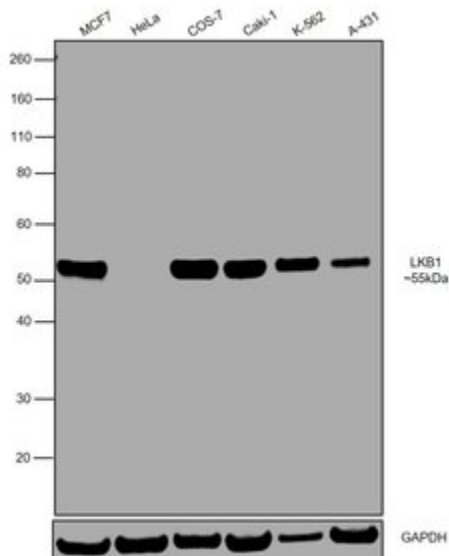
Antibody specificity was demonstrated by CRISPR-Cas9 mediated knockout of target protein. A loss of signal was observed for target protein in LKB1 KO cell line compared to control cell line using Anti-LKB1 Monoclonal Antibody (B.593.0)(Product # MA5-14942). Knockout validation info.



## Product Images For LKB1 Monoclonal Antibody (B.593.0)

### LKB1 Antibody (MA5-14942) in WB

Western blot was performed using Anti-LKB1 Monoclonal Antibody (B.593.0) (Product # MA5-14942) and a 55kDa band corresponding to LKB1 was observed in all the tested cell models. Modified whole cell lysate (1% SDS) (30ug lysate) of MCF7 (Lane 1), HeLa (Lane 2), COS-7 (Lane 3), Caki-1 (Lane 4), K-562 (Lane 5), and A-431 (Lane 6) were electrophoresed using Novex® NuPAGE® 4-12 % Bis-Tris gel (Product # NP0322BOX). Resolved proteins were then transferred onto a nitrocellulose membrane (Product # IB23001) by iBlot® 2 Dry Blotting System (Product # IB21001). The blot was probed with the primary antibody (1:1000 dilution) and detected by chemiluminescence with Goat anti-Rabbit IgG (H+L), Superclonal™ Recombinant Secondary Antibody, HRP conjugate (Product # A27036, 1:4000 dilution) using the iBright FL 1000 (Product # A32752). Chemiluminescent detection was performed using Novex® ECL Chemiluminescent Substrate Reagent Kit (Product # WP20005).



## View more figures on thermofisher.com

For Research Use Only. Not for use in diagnostic procedures. Not for resale without express authorization. Products are warranted to operate or perform substantially in conformance with published Product specifications in effect at the time of sale, as set forth in the Production documentation, specifications and/or accompanying package inserts ("Documentation"). No claim of suitability for use in applications regulated by FDA is made. The warranty provided herein is valid only when used by properly trained individuals. Unless otherwise stated in the Documentation, this warranty is limited to one year from date of shipment when the Product is subjected to normal, proper and intended usage. This warranty does not extend to anyone other than the Buyer. Any model or sample furnished to Buyer is merely illustrative of the general type and quality of goods and does not represent that any Product will conform to such model or sample. NO OTHER WARRANTIES, EXPRESS OR IMPLIED, ARE GRANTED INCLUDING WITHOUT LIMITATION, IMPLIED WARRANTIES OF MERCHANTABILITY, FITNESS FOR ANY PARTICULAR PURPOSE, OR NON-INFRINGEMENT. BUYER'S EXCLUSIVE REMEDY FOR NON-CONFORMING PRODUCTS DURING THE WARRANTY PERIOD IS LIMITED TO REPAIR, REPLACEMENT OF OR REFUND FOR THE NON-CONFORMING PRODUCT(S) AT SELLER'S SOLE OPTION. THERE IS NO OBLIGATION TO REPAIR, REPLACE OR REFUND FOR PRODUCTS AS THE RESULT OF (I) ACCIDENT, DISASTER OR EVENT OF FORCE MAJEURE, (II) MISUSE, FAULT OR NEGLIGENCE OF OR BY BUYER, (III) USE OF THE PRODUCTS IN A MANNER FOR WHICH THEY WERE NOT DESIGNED, OR (IV) IMPROPER STORAGE AND HANDLING OF THE PRODUCTS. Unless otherwise expressly stated on the Product or in the documentation accompanying the Product, the Product is intended for research only and is not to be used for any other purpose, including without limitation, unauthorized commercial uses, in vitro diagnostic uses, ex vivo or in vivo therapeutic uses, or any type of consumption by or application to human or animals.