

NEFL Monoclonal Antibody (T.400.5)

Product Details	
Size	100 µL
Species Reactivity	Human, Mouse, Rat
Host/Isotype	Rabbit / IgG
Class	Monoclonal
Type	Antibody
Clone	T.400.5
Conjugate	Unconjugated
Immunogen	Synthetic peptide surrounding Glu450 of human Neurofilament-L
Form	Liquid
Concentration	24 µg/mL
Purification	Affinity chromatography
Storage buffer	0.01M HEPES, pH 7.5, with 0.15M NaCl, 100µg/mL BSA, 50% glycerol
Contains	<0.02% sodium azide
Storage conditions	-20°C
RRID	AB_10984147

Applications	Tested Dilution	Publications
Western Blot (WB)	1:1,000	1 Publication
Immunohistochemistry (Paraffin) (IHC (P))	1:100	-
Immunocytochemistry (ICC/IF)	1:100	2 Publications

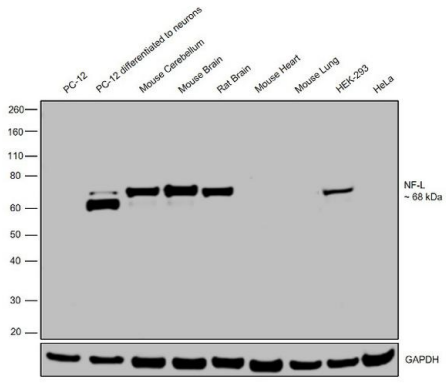
Product Specific Information

It is not recommended to aliquot this antibody.

Product Images For NEFL Monoclonal Antibody (T.400.5)

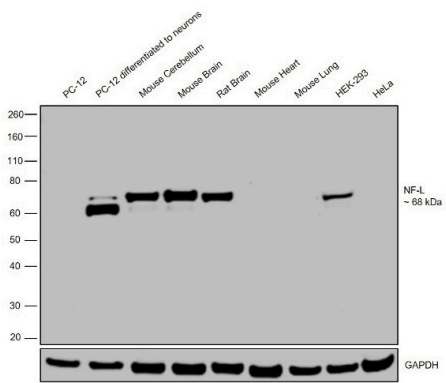
NEFL Antibody (MA5-14981) in WB

Western blot was performed using Anti-NEFL Monoclonal Antibody (T.400.5) (Product # MA5-14981) and a 68 kDa band corresponding to NEFL was observed in PC-12 differentiated neurons, HEK-293, Mouse Cerebellum, Mouse Brain and Rat Brain but not in PC-12, HeLa, Mouse Heart and Mouse Lung. Membrane enriched extracts (30 µg lysate) of PC-12 (Lane 1) and PC-12 differentiated neurons (Lane 2), Mouse Cerebellum (Lane 3), Mouse Brain (Lane 4), Rat Brain (Lane 5), Mouse Heart (Lane 6), Mouse Lung (Lane 7), HEK-293 (Lane 8) and HeLa (Lane 9) were electrophoresed using Novex® NuPAGE® 4-12 % Bis-Tris gel (Product # NP0321BOX). Resolved proteins were then transferred onto a nitrocellulose membrane (Product # IB23001) by iBlot® 2 Dry Blotting System (Product # IB21001). The blot was probed with the primary antibody (1:1,000 dilution) and detected by chemiluminescence with Goat anti-Rabbit IgG (Heavy Chain) Superclonal™ Recombinant Secondary Antibody, HRP (Product # A27036, 1:4000 dilution). Chemiluminescent detection was performed using Novex® ECL Chemiluminescent Substrate Reagent Kit (Product # WP20005).



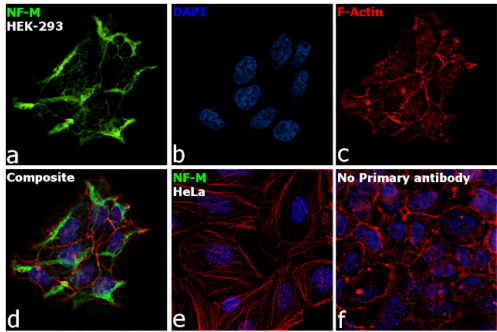
NEFL Antibody (MA5-14981)

Antibody specificity was demonstrated by detection of differential basal expression of the target across cell lines tested owing to their inherent genetic constitution. Relative expression of NEFL was observed in PC-12 differentiated neurons, HEK-293 cell line; Mouse Cerebellum, Mouse Brain and Rat Brain tissue lysates in comparison to PC-12 and HeLa cell lines; Mouse Heart and Mouse Lung tissue lysates which are reported to be negative using Anti-NEFL Monoclonal Antibody (T.400.5) (Product # MA5-14981) in immunofluorescence analysis. {RE}



NEFL Antibody (MA5-14981)

Antibody specificity was demonstrated by detection of differential basal expression of the target across cell lines tested owing to their inherent genetic constitution. Relative expression of NF-L was observed in HEK-293 cells, a cell model positive for NF-L expression in intermediate filaments of cytoskeleton, in comparison to HeLa, a cell model null for NF-L expression using Anti-NFL Monoclonal Antibody (Product # MA5-14981) in immunofluorescence. {RE}



View more figures on thermofisher.com

Western Blot (1)

<p>PloS one</p> <p>CDKL5 and Shootin1 Interact and Concur in Regulating Neuronal Polarization.</p> <p>"Published figure using NEFL monoclonal antibody (Product # MA5-14981) in Western Blot"</p> <p>Authors: Nawaz MS,Giarda E,Bedogni F,La Montanara P,Ricciardi S,Ciceri D,Alberio T,Landsberger N,Rusconi L, Kilstrup-Nielsen C</p>	<p>Year 2016</p>
--	----------------------

Immunocytochemistry (2)

<p>Nature communications</p> <p>Bioengineered constructs combined with exercise enhance stem cell-mediated treatment of volumetric muscle loss.</p> <p>"Published figure using NEFL monoclonal antibody (Product # MA5-14981) in Immunofluorescence"</p> <p>Authors: Quarta M,Cromie M,Chacon R,Blonigan J,Garcia V,Akimenko I,Hamer M,Paine P,Stok M,Shrager JB,Rando TA</p>	<p>Year 2017</p>
<p>Journal of tissue engineering and regenerative medicine</p> <p>Targeted neural differentiation of murine mesenchymal stem cells by a protocol simulating the inflammatory site of neural injury.</p> <p>"Published figure using NEFL monoclonal antibody (Product # MA5-14981) in Immunofluorescence"</p> <p>Authors: Chudickova M,Bruza P,Zajicova A,Trosan P,Svobodova L,Javorkova E,Kubanova S,Holan V</p>	<p>Year 2017</p>

For Research Use Only. Not for use in diagnostic procedures. Not for resale without express authorization. Products are warranted to operate or perform substantially in conformance with published Product specifications in effect at the time of sale, as set forth in the Production documentation, specifications and/or accompanying package inserts ("Documentation"). No claim of suitability for use in applications regulated by FDA is made. The warranty provided herein is valid only when used by properly trained individuals. Unless otherwise stated in the Documentation, this warranty is limited to one year from date of shipment when the Product is subjected to normal, proper and intended usage. This warranty does not extend to anyone other than the Buyer. Any model or sample furnished to Buyer is merely illustrative of the general type and quality of goods and does not represent that any Product will conform to such model or sample. NO OTHER WARRANTIES, EXPRESS OR IMPLIED, ARE GRANTED INCLUDING WITHOUT LIMITATION, IMPLIED WARRANTIES OF MERCHANTABILITY, FITNESS FOR ANY PARTICULAR PURPOSE, OR NON INFRINGEMENT. BUYER'S EXCLUSIVE REMEDY FOR NON-CONFORMING PRODUCTS DURING THE WARRANTY PERIOD IS LIMITED TO REPAIR, REPLACEMENT OF OR REFUND FOR THE NON-CONFORMING PRODUCT(S) AT SELLER'S SOLE OPTION. THERE IS NO OBLIGATION TO REPAIR, REPLACE OR REFUND FOR PRODUCTS AS THE RESULT OF (I) ACCIDENT, DISASTER OR EVENT OF FORCE MAJEURE, (II) MISUSE, FAULT OR NEGLIGENCE OF OR BY BUYER, (III) USE OF THE PRODUCTS IN A MANNER FOR WHICH THEY WERE NOT DESIGNED, OR (IV) IMPROPER STORAGE AND HANDLING OF THE PRODUCTS. Unless otherwise expressly stated on the Product or in the documentation accompanying the Product, the Product is intended for research only and is not to be used for any other purpose, including without limitation, unauthorized commercial uses, in vitro diagnostic uses, ex vivo or in vivo therapeutic uses, or any type of consumption by or application to human or animals.