

STAT1 Monoclonal Antibody (C.156.9)

Product Details

Size	100 µL
Species Reactivity	Human, Non-human primate
Published Species	Human
Host/Isotype	Rabbit / IgG
Class	Monoclonal
Type	Antibody
Clone	C.156.9
Conjugate	Unconjugated
Immunogen	Synthetic peptide corresponding to the sequence of human Stat1
Form	Liquid
Concentration	167 µg/mL
Purification	Affinity chromatography
Storage buffer	0.01M HEPES, pH 7.5, with 0.15M NaCl, 100µg/mL BSA, 50% glycerol
Contains	<0.02% sodium azide
Storage conditions	-20°C
RRID	AB_10984833

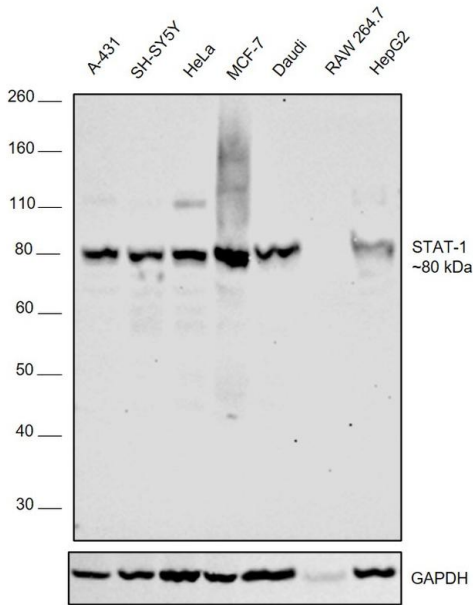
Applications	Tested Dilution	Publications
Western Blot (WB)	1:1,000	1 Publication
Immunohistochemistry (Paraffin) (IHC (P))	1:400	-
Immunocytochemistry (ICC/IF)	1:100	-

Product Specific Information

Antibodies to this protein (and modification) were previously sold as part of a Thermo Scientific Cellomics High Content Screening Kit. This replacement antibody is now recommended for researchers who need an antibody for high content cell based assays. It has been thoroughly tested and validated for cellular immunofluorescence (IF) applications. Further optimization including the selection of the most appropriate fluorescent Dylight conjugated secondary antibody may have to be performed for your high content assay.

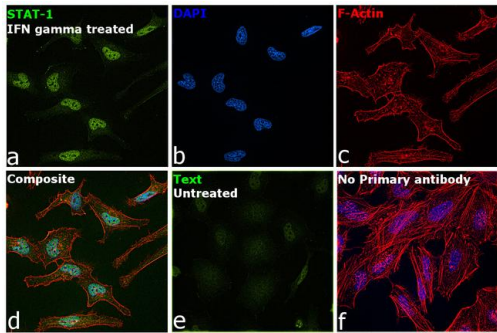
It is not recommended to aliquot this antibody.

Product Images For STAT1 Monoclonal Antibody (C.156.9)



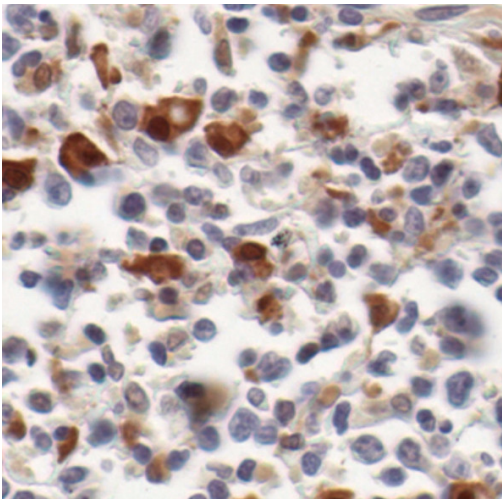
STAT1 Antibody (MA5-15129) in WB

Western blot was performed using Anti-STAT1 Monoclonal Antibody (C.156.9) (Product # MA5-15129) and a ~80kDa band corresponding to Signal transducer and activator of transcription 1-alpha/beta was observed across cell lines tested. Whole cell extracts (30 µg lysate) of A-431 (Lane 1), SH-SY5Y (Lane 2), HeLa (Lane 3), MCF7 (Lane 4), Daudi (Lane 5), RAW 264.7 (Lane 6), Hep G2 (Lane 7) were electrophoresed using NuPAGE™ 4-12% Bis-Tris Protein Gel (Product # NP0321BOX). Resolved proteins were then transferred onto a Nitrocellulose membrane (Product # LC2001) by iBlot® 2 Dry Blotting System (Product # IB21001). The blot was probed with the primary antibody (1:1000) and detected by chemiluminescence with Goat anti-Rabbit IgG (Heavy Chain) Superclonal™ Recombinant Secondary Antibody, HRP (Product # A27036, 1:4000) using the iBright FL 1000 (Product # A32752). Chemiluminescent detection was performed using Novex® ECL Chemiluminescent Substrate Reagent Kit (Product # WP20005).



STAT1 Antibody (MA5-15129)

Detection of altered subcellular localization of the target protein by cell treatment demonstrates antibody specificity. Immunofluorescence analysis using STAT1 Monoclonal Antibody (C.156.9) (Product # MA5-15129), shows increased expression upon treatment with IFN gamma. {TM}



STAT1 Antibody (MA5-15129) in IHC (P)

Immunohistochemical analysis of Stat1 in paraffin-embedded human Non-Hodgkin's lymphoma using a Stat1 monoclonal antibody (Product # MA5-15129).

View more figures on thermofisher.com

Western Blot (1)

Cancers	Year 2020
Sustained Inflammatory Signalling through Stat1/Stat2/IRF9 Is Associated with Amoeboid Phenotype of Melanoma Cells.	Species Human
"MA5-15129 was used in Western Blotting to report that cells after mesenchymal-amoeboid transition show the increased expression of genes associated with the type I interferon response."	
Authors: Gandaloviová A,Šchová AM,ermák V,Merta L,Rösel D,Brábek J	

For Research Use Only. Not for use in diagnostic procedures. Not for resale without express authorization. Products are warranted to operate or perform substantially in conformance with published Product specifications in effect at the time of sale, as set forth in the Production documentation, specifications and/or accompanying package inserts ("Documentation"). No claim of suitability for use in applications regulated by FDA is made. The warranty provided herein is valid only when used by properly trained individuals. Unless otherwise stated in the Documentation, this warranty is limited to one year from date of shipment when the Product is subjected to normal, proper and intended usage. This warranty does not extend to anyone other than the Buyer. Any model or sample furnished to Buyer is merely illustrative of the general type and quality of goods and does not represent that any Product will conform to such model or sample. NO OTHER WARRANTIES, EXPRESS OR IMPLIED, ARE GRANTED INCLUDING WITHOUT LIMITATION, IMPLIED WARRANTIES OF MERCHANTABILITY, FITNESS FOR ANY PARTICULAR PURPOSE, OR NON INFRINGEMENT. BUYER'S EXCLUSIVE REMEDY FOR NON-CONFORMING PRODUCTS DURING THE WARRANTY PERIOD IS LIMITED TO REPAIR, REPLACEMENT OF OR REFUND FOR THE NON-CONFORMING PRODUCT(S) AT SELLER'S SOLE OPTION. THERE IS NO OBLIGATION TO REPAIR, REPLACE OR REFUND FOR PRODUCTS AS THE RESULT OF (I) ACCIDENT, DISASTER OR EVENT OF FORCE MAJEURE, (II) MISUSE, FAULT OR NEGLIGENCE OF OR BY BUYER, (III) USE OF THE PRODUCTS IN A MANNER FOR WHICH THEY WERE NOT DESIGNED, OR (IV) IMPROPER STORAGE AND HANDLING OF THE PRODUCTS. Unless otherwise expressly stated on the Product or in the documentation accompanying the Product, the Product is intended for research only and is not to be used for any other purpose, including without limitation, unauthorized commercial uses, in vitro diagnostic uses, ex vivo or in vivo therapeutic uses, or any type of consumption by or application to human or animals.