

# Bcl-xL Monoclonal Antibody (C.85.1)

Product Details	
Size	100 µL
Species Reactivity	Human, Mouse, Non-human primate, Rat
Host/Isotope	Rabbit / IgG
Class	Monoclonal
Type	Antibody
Clone	C.85.1
Conjugate	Unconjugated
Immunogen	Synthetic peptide corresponding to residues surrounding Asp61 of human Bcl-xL
Form	Liquid
Purification	Affinity chromatography
Storage buffer	0.01M HEPES, pH 7.5, with 0.15M NaCl, 100µg/mL BSA, 50% glycerol
Contains	<0.02% sodium azide
Storage Conditions	-20°C
RRID	AB_10979212

Applications	Tested	Dilution	Published
Western Blot (WB)	✓	1:1000	1 Publication
Flow Cytometry (Flow)	✓	1:800	
Immunocytochemistry (ICC)	✓	1:200	
Immunofluorescence (IF)	✓	1:200	
Immunohistochemistry (Frozen) (IHC (F))	✓	1:1200	
Immunohistochemistry (Paraffin) (IHC (P))	✓	1:1200	
Immunoprecipitation (IP)	✓	1:100	

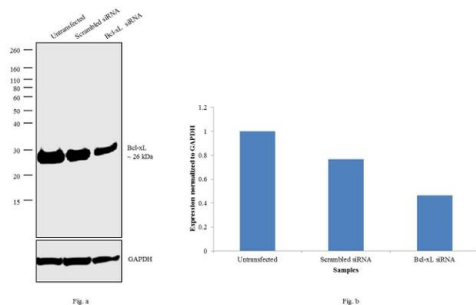
## Product Specific Information

It is not recommended to aliquot this antibody.

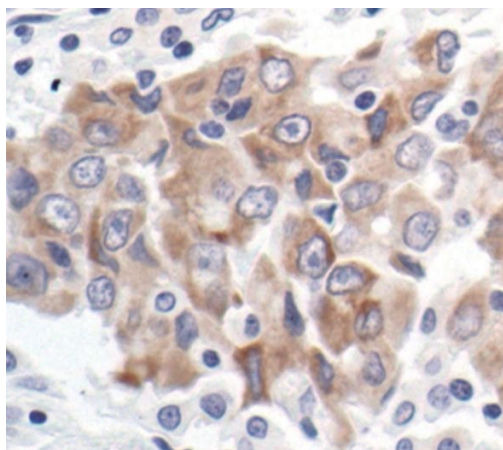
This antibody is not cross-reactive with other Bcl-2 family members.

### Bcl-xL Antibody (MA5-15142)

Antibody specificity was demonstrated by siRNA mediated knockdown of target protein. Hep G2 cells were transfected with Bcl-xL siRNA and loss of signal was observed in Western Blot using Anti- Bcl-xL Monoclonal Antibody (Product # MA5-15142). KnockDown validation info.



### Product Images For Bcl-xL Monoclonal Antibody (C.85.1)

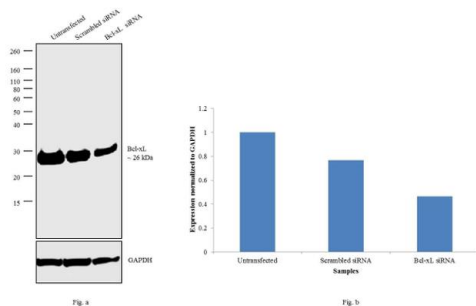


### Bcl-xL Antibody (MA5-15142) in IHC

Immunohistochemical analysis of Bcl-xL in paraffin-embedded human lung carcinoma using a Bcl-xL monoclonal antibody (Product # MA5-15142).

### Bcl-xL Antibody (MA5-15142) in WB

Knockdown of Bcl-xL was achieved by transfecting Hep G2 cells with Bcl-xL specific validated siRNAs (Silencer® select Product # s1920). Western blot analysis (Fig. a) was performed using whole cell extracts from the Bcl-xL knockdown cells (lane 3), non-specific scrambled siRNA transfected cells (lane 2) and untransfected cells (lane 1). The blots were probed with Bcl-xL Monoclonal Antibody (Product # MA5-15142, 1:1000 dilution) and Goat anti-Rabbit IgG (H+L) Superclonal™ Secondary Antibody, HRP conjugate (Product # A27036, 0.25 µg/mL, 1:4000 dilution). Densitometric analysis of this western blot is shown in histogram (Fig. b). Decrease in signal upon siRNA mediated knock down confirms that antibody is specific to Bcl-xL.



View more figures on [thermofisher.com](http://thermofisher.com)

## Western Blot (1)

Oncotarget

### Alpha-linolenic acid stabilizes HIF-1 and downregulates FASN to promote mitochondrial apoptosis for mammary gland chemoprevention.

"Published figure using Bcl-xL monoclonal antibody (Product # MA5-15142) in Western Blot"

Authors: Roy S, Rawat AK, Sammi SR, Devi U, Singh M, Gautam S, Yadav RK, Rawat JK, Singh L, Ansari MN, Saeedan AS, Pandey R, Kumar D, Kaithwas G

**Species**  
Not Applicable

**Dilution**  
Not Cited

**Year**  
2017

For Research Use Only. Not for use in diagnostic procedures. Not for resale without express authorization. Products are warranted to operate or perform substantially in conformance with published Product specifications in effect at the time of sale, as set forth in the Production documentation, specifications and/or accompanying package inserts ("Documentation"). No claim of suitability for use in applications regulated by FDA is made. The warranty provided herein is valid only when used by properly trained individuals. Unless otherwise stated in the Documentation, this warranty is limited to one year from date of shipment when the Product is subjected to normal, proper and intended usage. This warranty does not extend to anyone other than the Buyer. Any model or sample furnished to Buyer is merely illustrative of the general type and quality of goods and does not represent that any Product will conform to such model or sample. NO OTHER WARRANTIES, EXPRESS OR IMPLIED, ARE GRANTED INCLUDING WITHOUT LIMITATION, IMPLIED WARRANTIES OF MERCHANTABILITY, FITNESS FOR ANY PARTICULAR PURPOSE, OR NON INFRINGEMENT. BUYER'S EXCLUSIVE REMEDY FOR NON-CONFORMING PRODUCTS DURING THE WARRANTY PERIOD IS LIMITED TO REPAIR, REPLACEMENT OF OR REFUND FOR THE NON-CONFORMING PRODUCT(S) AT SELLER'S SOLE OPTION. THERE IS NO OBLIGATION TO REPAIR, REPLACE OR REFUND FOR PRODUCTS AS THE RESULT OF (I) ACCIDENT, DISASTER OR EVENT OF FORCE MAJEURE, (II) MISUSE, FAULT OR NEGLIGENCE OF OR BY BUYER, (III) USE OF THE PRODUCTS IN A MANNER FOR WHICH THEY WERE NOT DESIGNED, OR (IV) IMPROPER STORAGE AND HANDLING OF THE PRODUCTS. Unless otherwise expressly stated on the Product or in the documentation accompanying the Product, the Product is intended for research only and is not to be used for any other purpose, including without limitation, unauthorized commercial uses, in vitro diagnostic uses, ex vivo or in vivo therapeutic uses, or any type of consumption by or application to human or animals.