

Phospho-c-Raf (Ser338) Monoclonal Antibody (E.838.4)

Product Details	
Size	100 µL
Species Reactivity	Human, Mouse, Non-human primate, Rat
Published Species	Human
Host/Isotype	Rabbit / IgG
Class	Monoclonal
Type	Antibody
Clone	E.838.4
Conjugate	Unconjugated
Immunogen	Synthetic phosphopeptide corresponding to residues surrounding serine 338 of human Raf
Form	Liquid
Concentration	108 µg/mL
Purification	Affinity chromatography
Storage buffer	0.01M HEPES, pH 7.5, with 0.15M NaCl, 100µg/mL BSA, 50% glycerol
Contains	<0.02% sodium azide
Storage conditions	-20°C
RRID	AB_10984169

Applications	Tested Dilution	Publications
Western Blot (WB)	1:1,000	3 Publications
Immunohistochemistry (IHC)	-	0 Publication
GST Pull Down (GPD)	-	0 Publication

Product Specific Information

It is not recommended to aliquot this antibody.

Product Images For Phospho-c-Raf (Ser338) Monoclonal Antibody (E.838.4)

Phospho-c-Raf (Ser338) Antibody (MA5-15176)

Antibody specificity was demonstrated by CRISPR-Cas9 mediated knockout of target protein. A loss of signal was observed for target protein in RAF1 KO cell line compared to control cell line using Phospho-c-Raf (Ser338) Monoclonal Antibody (E.838.4) (Product # MA5-15176). {KO}

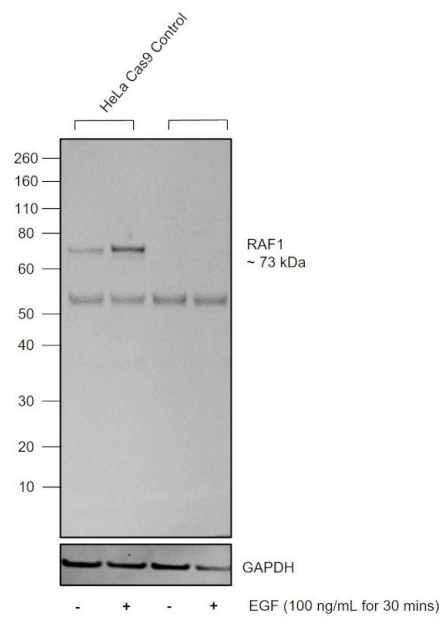


Fig a

Phospho-c-Raf (Ser338) Antibody (MA5-15176) in WB

Knockout of RAF1 was achieved by CRISPR-Cas9 genome editing using LentiArray™ Lentiviral sgRNA (Product # A32042, Assay ID CRISPR627773_LV) and LentiArray Cas9 Lentivirus (Product # A32064). Western blot analysis of RAF1 was performed by loading 30 µg of HeLa Cas9 (Lane 1), HeLa Cas9 treated with 100 ng/mL EGF for 30 min (Lane 2), HeLa RAF1 KO (Lane 3) and HeLa RAF1 KO treated with 100 ng/mL EGF for 30 min (Lane 4) membrane enriched extracts. The samples were electrophoresed using NuPAGE™ Novex™ 4-12% Bis-Tris Protein Gel (Product # NP0321BOX). Resolved proteins were then transferred onto a nitrocellulose membrane (Product # IB23001) by iBlot® 2 Dry Blotting System (Product # IB21001). The blot was probed with Phospho-c-Raf (Ser338) Monoclonal Antibody (E.838.4) (Product # MA5-15176, 1:1000 dilution) and detected by Goat anti-Rabbit IgG (H+L) Superclonal™ Recombinant Secondary Antibody, HRP (Product # A27036, 1:10,000 dilution) using the iBright™ FL1500 (Product # A44115). Chemiluminescent detection was performed using SuperSignal™ West Dura Extended Duration Substrate (Product # 34076). Loss of signal upon CRISPR mediated knockout (KO) using the LentiArray™ CRISPR product line confirms that antibody is specific to RAF1. An uncharacterized band was observed in all the samples at ~55 kDa.

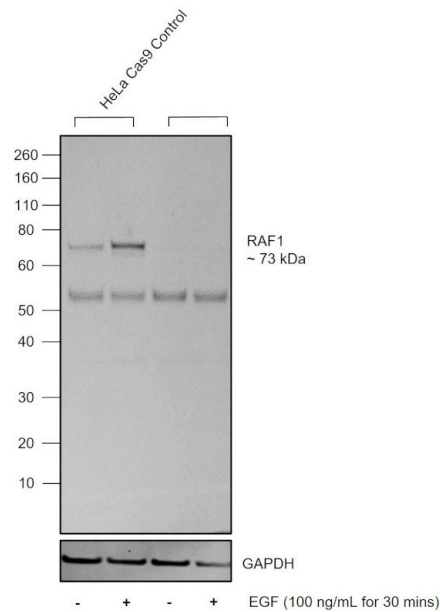


Fig a

Western Blot (3)

Journal of cell science

Aberrant cytoplasmic localization of ARID1B activates ERK signaling and promotes oncogenesis.

"MA5-15176 was used in Western Blot to characterize the ARID1B nuclear localization signal."

Authors: Animireddy S,Kavadipula P,Kotapalli V,Gowrishankar S,Rao S,Bashyam MD

Year
2021

Species
Human

Dilution
1:5000

Scientific reports

Escitalopram Ameliorates Cognitive Impairment in D-Galactose-Injected Ovariectomized Rats: Modulation of JNK, GSK-3, and ERK Signalling Pathways.

"Published figure using Phospho-c-Raf (Ser338) monoclonal antibody (Product # MA5-15176) in Western Blot"

Authors: Ibrahim WW,Abdelkader NF,Ismail HM,Khattab MM

Year
2019

[View more WB references on thermofisher.com](#)

For Research Use Only. Not for use in diagnostic procedures. Not for resale without express authorization. Products are warranted to operate or perform substantially in conformance with published Product specifications in effect at the time of sale, as set forth in the Production documentation, specifications and/or accompanying package inserts ("Documentation"). No claim of suitability for use in applications regulated by FDA is made. The warranty provided herein is valid only when used by properly trained individuals. Unless otherwise stated in the Documentation, this warranty is limited to one year from date of shipment when the Product is subjected to normal, proper and intended usage. This warranty does not extend to anyone other than the Buyer. Any model or sample furnished to Buyer is merely illustrative of the general type and quality of goods and does not represent that any Product will conform to such model or sample. NO OTHER WARRANTIES, EXPRESS OR IMPLIED, ARE GRANTED INCLUDING WITHOUT LIMITATION, IMPLIED WARRANTIES OF MERCHANTABILITY, FITNESS FOR ANY PARTICULAR PURPOSE, OR NON INFRINGEMENT. BUYER'S EXCLUSIVE REMEDY FOR NON-CONFORMING PRODUCTS DURING THE WARRANTY PERIOD IS LIMITED TO REPAIR, REPLACEMENT OF OR REFUND FOR THE NON-CONFORMING PRODUCT(S) AT SELLER'S SOLE OPTION. THERE IS NO OBLIGATION TO REPAIR, REPLACE OR REFUND FOR PRODUCTS AS THE RESULT OF (I) ACCIDENT, DISASTER OR EVENT OF FORCE MAJEURE, (II) MISUSE, FAULT OR NEGLIGENCE OF OR BY BUYER, (III) USE OF THE PRODUCTS IN A MANNER FOR WHICH THEY WERE NOT DESIGNED, OR (IV) IMPROPER STORAGE AND HANDLING OF THE PRODUCTS. Unless otherwise expressly stated on the Product or in the documentation accompanying the Product, the Product is intended for research only and is not to be used for any other purpose, including without limitation, unauthorized commercial uses, in vitro diagnostic uses, ex vivo or in vivo therapeutic uses, or any type of consumption by or application to human or animals.