

Calreticulin Monoclonal Antibody (1G6A7)

Product Details	
Size	100 µg
Species	Human, Mouse, Non-human primate
Published Species	Human, Mouse
Expression System	Mouse / IgG2a
Class	Monoclonal
Type	Antibody
Clone	1G6A7
Conjugate	Unconjugated
Immunogen	Synthetic peptide corresponding to aa (EEEDVPGQAKDELG) of human Calreticulin, conjugated to KLH.
Form	Liquid
Concentration	1 mg/mL
Storage buffer	ascites
Contains	0.03% sodium azide
Storage Conditions	Store at 4°C short term. For long term storage, store at -20°C, avoiding freeze/thaw cycles.
RRID	AB_10980289

Applications	Tested Dilution	Publications
Flow Cytometry (Flow)	1-3 µg/mL	-
Immunocytochemistry (ICC)	1:200 - 1:1000	-
Immunofluorescence (IF)	1:200 - 1:1000	-
Immunohistochemistry (IHC)	1:200 - 1:1000	2 Publications
Western Blot (WB)	1:500 - 1:2000	2 Publications

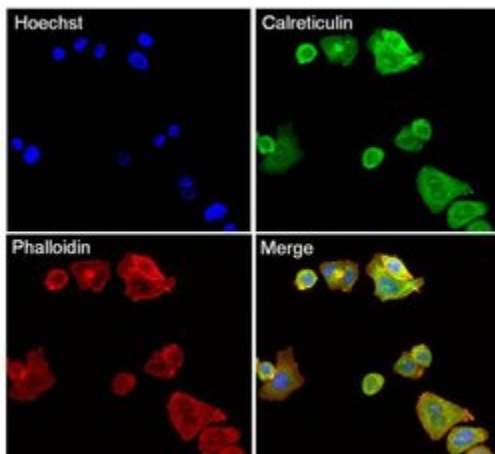
Product Specific Information

MA5-15382 targets Calreticulin in IF, IHC, Flow and WB applications and shows reactivity with Human, non-Human primate, and mouse samples.

The MA5-15382 immunogen is synthetic peptide corresponding to aa (EEEDVPGQAKDELG) of human Calreticulin, conjugated to KLH.

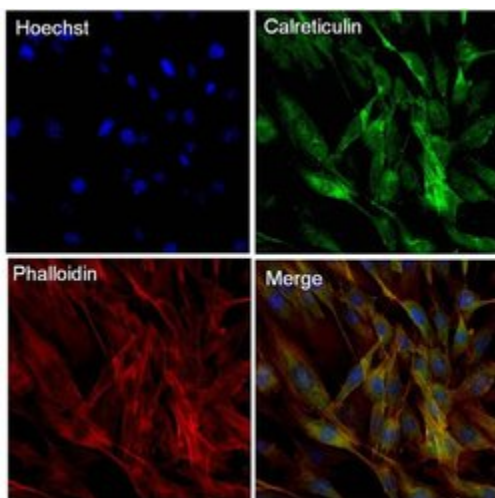
MA5-15382 detects Calreticulin which has a predicted molecular weight of approximately 48kDa.

Product Images For Calreticulin Monoclonal Antibody (1G6A7)



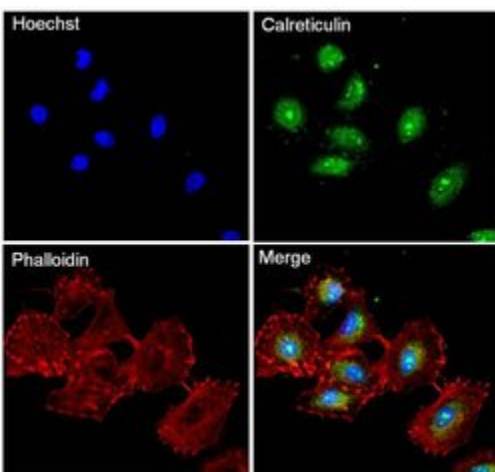
Calreticulin Antibody (MA5-15382) in IF

Immunofluorescent analysis of Calreticulin (green) in SK-BR-3 cells. The cells were fixed with 4% paraformaldehyde in PBS for 15 minutes at room temperature, permeabilized with 0.1% Triton X-100 for 15 minutes, and blocked with 3% BSA for 30 minutes at room temperature. Cells were stained with a Calreticulin mouse monoclonal antibody (Product # MA5-15382) at a concentration of 10 µg/mL in blocking buffer for 1 hour at room temperature, and then incubated with a Goat anti-Mouse IgG (H+L) Secondary Antibody, Alexa Fluor Plus 488 conjugate (Product # A32731) at a dilution of 1:500 for at least 30 minutes at a room temperature in the dark (green). F-actin (red) was stained by Dylight 554 Phalloidin (Product # 21834) and nuclei (blue) were stained with Hoechst 33342 (Product # 62249). Images were taken on a Thermo Scientific ToxInsight Instrument at 20X magnification.



Calreticulin Antibody (MA5-15382) in IF

Immunofluorescent analysis of Calreticulin (green) in NIH3T3 cells. The cells were fixed with 4% paraformaldehyde in PBS for 15 minutes at room temperature, permeabilized with 0.1% Triton X-100 for 15 minutes, and blocked with 3% BSA for 30 minutes at room temperature. Cells were stained with a Calreticulin mouse monoclonal antibody (Product # MA5-15382) at a concentration of 10 µg/mL in blocking buffer for 1 hour at room temperature, and then incubated with a Goat anti-Mouse IgG (H+L) Secondary Antibody, Alexa Fluor Plus 488 conjugate (Product # A32731) at a dilution of 1:500 for at least 30 minutes at a room temperature in the dark (green). F-actin (red) was stained by Dylight 554 Phalloidin (Product # 21834) and nuclei (blue) were stained with Hoechst 33342 (Product # 62249). Images were taken on a Thermo Scientific ToxInsight Instrument at 20X magnification.



Calreticulin Antibody (MA5-15382) in IF

Immunofluorescent analysis of Calreticulin (green) in A549 cells. The cells were fixed with 4% paraformaldehyde in PBS for 15 minutes at room temperature, permeabilized with 0.1% Triton X-100 for 15 minutes, and blocked with 3% BSA for 30 minutes at room temperature. Cells were stained with a Calreticulin mouse monoclonal antibody (Product # MA5-15382) at a concentration of 10 µg/mL in blocking buffer for 1 hour at room temperature, and then incubated with a Goat anti-Mouse IgG (H+L) Secondary Antibody, Alexa Fluor Plus 488 conjugate (Product # A32731) at a dilution of 1:500 for at least 30 minutes at a room temperature in the dark (green). F-actin (red) was stained by Dylight 554 Phalloidin (Product # 21834) and nuclei (blue) were stained with Hoechst 33342 (Product # 62249). Images were taken on a Thermo Scientific ToxInsight Instrument at 20X magnification.

[View more figures on thermofisher.com](http://thermofisher.com)

Western Blot (2)

PloS one

Transcriptomic and proteomic host response to *Aspergillus fumigatus* conidia in an air-liquid interface model of human bronchial epithelium.

"MA5-15382 was used in Western Blotting to determine the transcriptomic and proteomic responses of primary human bronchial epithelial cells following interaction with *Aspergillus fumigatus* conidia."

Authors: Toor A,Culibrk L,Singhera GK,Moon KM,Prudova A,Foster LJ,Moore MM,Dorscheid DR,Tebbutt SJ

Species
Human

Dilution
1:1,000

Year
2019

International journal of molecular sciences

Serum calreticulin is a negative biomarker in patients with Alzheimer's disease.

"MA5-15382 was used in western blot to measure calreticulin in patients with Alzheimer's disease and assess it's use as a biomarker for disease"

Authors: Lin Q,Cao Y,Gao J

Species
Human

Dilution
1:1000

Year
2014

Immunohistochemistry (2)

Molecular vision

Expression in retinal neurons of fukutin and FKR_P, the protein products of two dystroglycanopathy-causative genes.

"MA5-15382 was used in Immunohistochemistry to suggest that fukutin and FKR_P participate in the synthesis of O-mannosyl glycans added to -dystroglycan in the endoplasmic reticulum and Golgi complex."

Authors: Haro C,Urbe ML,Quereda C,Cruces J,Martín-Nieto J

Species
Mouse

Dilution
1:1,000

Year
2018

Blood

Platelet protein disulfide isomerase is localized in the dense tubular system and does not become surface expressed after activation.

"MA5-15382 was used in immunohistochemistry to study the subcellular localization of platelet protein disulfide isomerase"

Authors: van Nispen Tot Pannerden HE,van Dijk SM,Du V,Heijnen HF

Species
Human

Dilution
Not Cited

Year
2009

For Research Use Only. Not for use in diagnostic procedures. Not for resale without express authorization. Products are warranted to operate or perform substantially in conformance with published Product specifications in effect at the time of sale, as set forth in the Production documentation, specifications and/or accompanying package inserts ("Documentation"). No claim of suitability for use in applications regulated by FDA is made. The warranty provided herein is valid only when used by properly trained individuals. Unless otherwise stated in the Documentation, this warranty is limited to one year from date of shipment when the Product is subjected to normal, proper and intended usage. This warranty does not extend to anyone other than the Buyer. Any model or sample furnished to Buyer is merely illustrative of the general type and quality of goods and does not represent that any Product will conform to such model or sample. NO OTHER WARRANTIES, EXPRESS OR IMPLIED, ARE GRANTED INCLUDING WITHOUT LIMITATION, IMPLIED WARRANTIES OF MERCHANTABILITY, FITNESS FOR ANY PARTICULAR PURPOSE, OR NON INFRINGEMENT. BUYER'S EXCLUSIVE REMEDY FOR NON-CONFORMING PRODUCTS DURING THE WARRANTY PERIOD IS LIMITED TO REPAIR, REPLACEMENT OF OR REFUND FOR THE NON-CONFORMING PRODUCT(S) AT SELLER'S SOLE OPTION. THERE IS NO OBLIGATION TO REPAIR, REPLACE OR REFUND FOR PRODUCTS AS THE RESULT OF (I) ACCIDENT, DISASTER OR EVENT OF FORCE MAJEURE, (II) MISUSE, FAULT OR NEGLIGENCE OF OR BY BUYER, (III) USE OF THE PRODUCTS IN A MANNER FOR WHICH THEY WERE NOT DESIGNED, OR (IV) IMPROPER STORAGE AND HANDLING OF THE PRODUCTS. Unless otherwise expressly stated on the Product or in the documentation accompanying the Product, the Product is intended for research only and is not to be used for any other purpose, including without limitation, unauthorized commercial uses, in vitro diagnostic uses, ex vivo or in vivo therapeutic uses, or any type of consumption by or application to human or animals.