

HFE Monoclonal Antibody (3F1)

Product Details

| | |
|--------------------|--|
| Size | 100 µL |
| Species Reactivity | Human |
| Host/Isotype | Mouse / IgG1 |
| Class | Monoclonal |
| Type | Antibody |
| Clone | 3F1 |
| Conjugate | Unconjugated |
| Immunogen | Purified recombinant fragment of human HFE expressed in E. Coli. |
| Form | Liquid |
| Concentration | Conc. Not Determined |
| Storage buffer | ascites |
| Contains | 0.03% sodium azide |
| Storage conditions | Store at 4°C short term. For long term storage, store at -20°C, avoiding freeze/thaw cycles. |
| RRID | AB_11152450 |

| Applications | Tested Dilution | Publications |
|------------------------------|-----------------|--------------|
| Western Blot (WB) | 1:500-1:2,000 | - |
| Immunocytochemistry (ICC/IF) | 1:200-1:1,000 | - |
| ELISA (ELISA) | 1:10,000 | - |

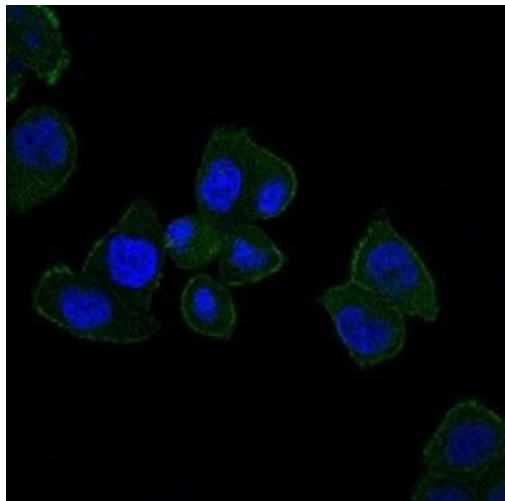
Product Specific Information

MA5-15907 targets HFE in indirect ELISA, IF and WB applications and shows reactivity with Human samples.

The MA5-15907 immunogen is purified recombinant fragment of human HFE expressed in E. Coli. .

MA5-15907 detects HFE which has a predicted molecular weight of approximately 40kDa.

Product Images For HFE Monoclonal Antibody (3F1)

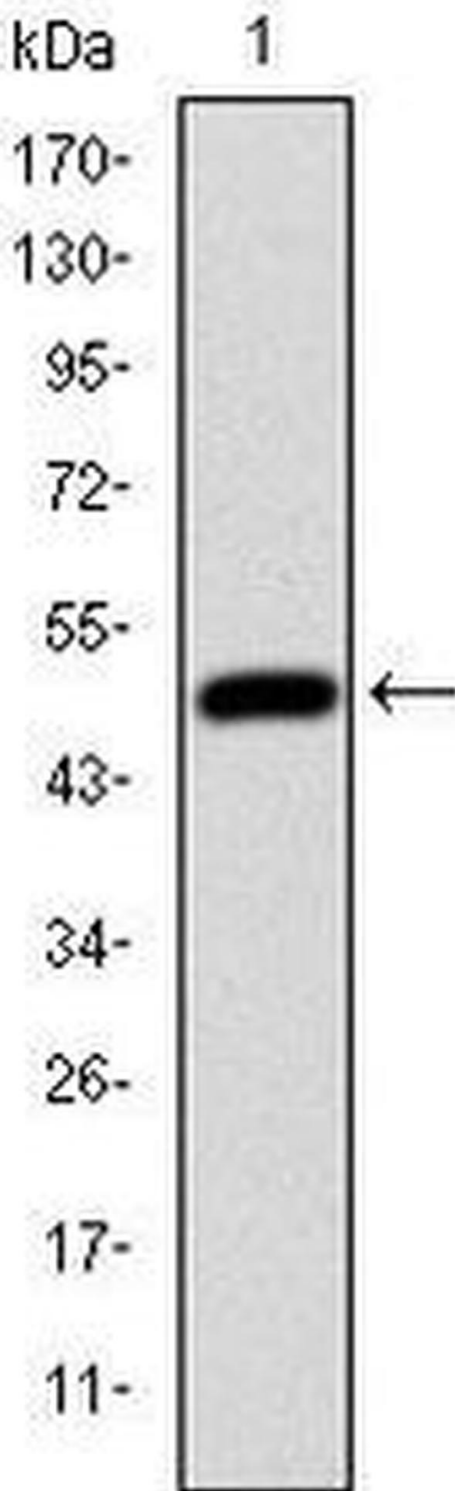


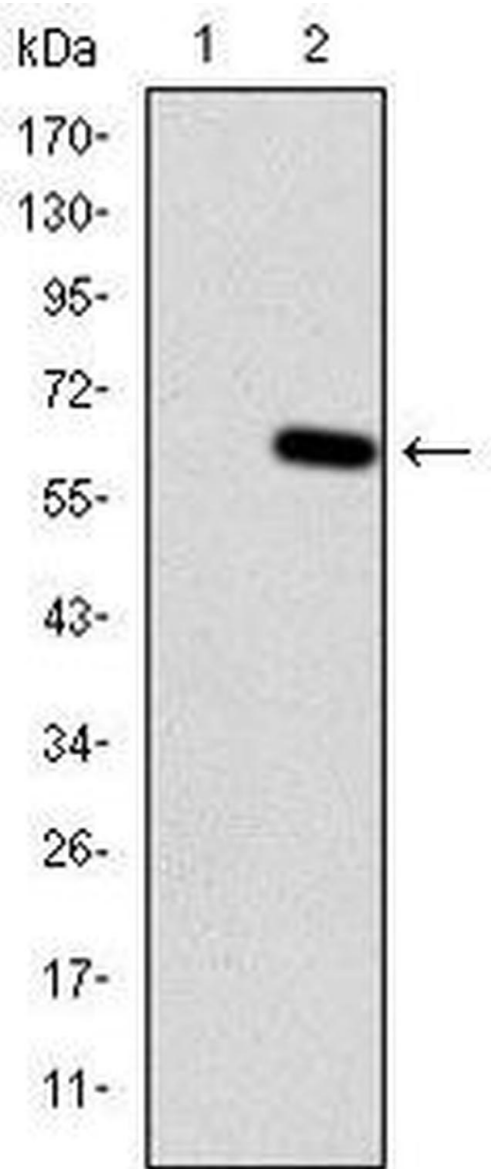
HFE Antibody (MA5-15907) in ICC/IF

Immunofluorescence analysis of HepG2 cells using HFE monoclonal antibody (Product # MA5-15907) (Green). Blue: DRAQ5 fluorescent DNA dye.

HFE Antibody (MA5-15907) in WB

Western blot analysis of HFE using a HFE monoclonal antibody (Product # MA5-15907) against a human HFE (AA: 125-282) recombinant protein.





HFE Antibody (MA5-15907) in WB

Western blot analysis of HFE using HFE monoclonal antibody (Product # MA5-15907) in HEK293 (1) and HFE (AA: 125-282) human IgG Fc transfected HEK293 (2) cell lysate.

For Research Use Only. Not for use in diagnostic procedures. Not for resale without express authorization. Products are warranted to operate or perform substantially in conformance with published Product specifications in effect at the time of sale, as set forth in the Production documentation, specifications and/or accompanying package inserts ("Documentation"). No claim of suitability for use in applications regulated by FDA is made. The warranty provided herein is valid only when used by properly trained individuals. Unless otherwise stated in the Documentation, this warranty is limited to one year from date of shipment when the Product is subjected to normal, proper and intended usage. This warranty does not extend to anyone other than the Buyer. Any model or sample furnished to Buyer is merely illustrative of the general type and quality of goods and does not represent that any Product will conform to such model or sample. NO OTHER WARRANTIES, EXPRESS OR IMPLIED, ARE GRANTED INCLUDING WITHOUT LIMITATION, IMPLIED WARRANTIES OF MERCHANTABILITY, FITNESS FOR ANY PARTICULAR PURPOSE, OR NON INFRINGEMENT. BUYER'S EXCLUSIVE REMEDY FOR NON-CONFORMING PRODUCTS DURING THE WARRANTY PERIOD IS LIMITED TO REPAIR, REPLACEMENT OF OR REFUND FOR THE NON-CONFORMING PRODUCT(S) AT SELLER'S SOLE OPTION. THERE IS NO OBLIGATION TO REPAIR, REPLACE OR REFUND FOR PRODUCTS AS THE RESULT OF (I) ACCIDENT, DISASTER OR EVENT OF FORCE MAJEURE, (II) MISUSE, FAULT OR NEGLIGENCE OF OR BY BUYER, (III) USE OF THE PRODUCTS IN A MANNER FOR WHICH THEY WERE NOT DESIGNED, OR (IV) IMPROPER STORAGE AND HANDLING OF THE PRODUCTS. Unless otherwise expressly stated on the Product or in the documentation accompanying the Product, the Product is intended for research only and is not to be used for any other purpose, including without limitation, unauthorized commercial uses, in vitro diagnostic uses, ex vivo or in vivo therapeutic uses, or any type of consumption by or application to human or animals.