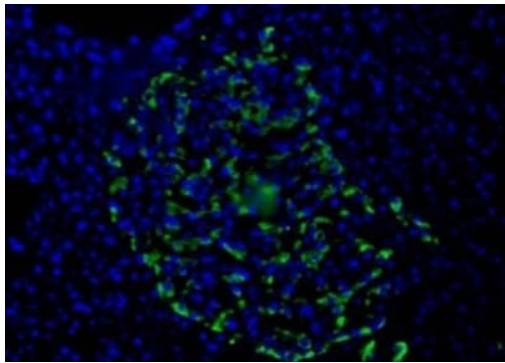


HPa1 Monoclonal Antibody (DHIC2-2C12)

Product Details	
Size	100 µL
Species Reactivity	Human
Published Species	Human
Host/Isotype	Mouse / IgM
Class	Monoclonal
Type	Antibody
Clone	DHIC2-2C12
Conjugate	Unconjugated
Immunogen	Human pancreatic enriched alpha cells
Form	Liquid
Concentration	Not Determined mg/mL
Storage buffer	tissue culture supernatant
Contains	0.05% sodium azide
Storage conditions	4° C, do not freeze
RRID	AB_11152494

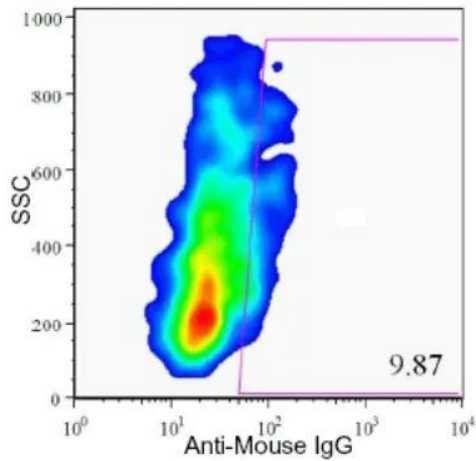
Applications	Tested Dilution	Publications
Western Blot (WB)	1:100-1:2,000	-
Immunohistochemistry (IHC)	-	1 Publication
Immunohistochemistry (Frozen) (IHC (F))	1:100	-
Immunocytochemistry (ICC/IF)	1:10-1:500	-
Flow Cytometry (Flow)	1:50-1:100	-

Product Images For HPa1 Monoclonal Antibody (DHIC2-2C12)



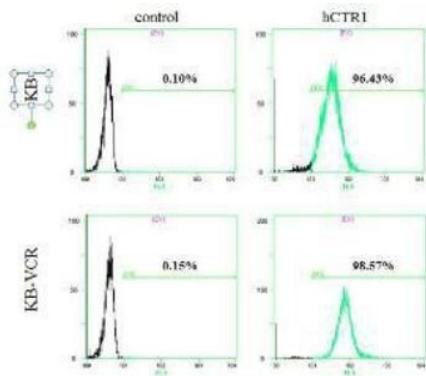
HPa1 Antibody (MA5-16130) in ICC/IF

Immunocytochemistry analysis of HPa1 in frozen section of human pancreas. Samples were incubated in HPa1 monoclonal antibody (Product # MA5-16130).



HPa1 Antibody (MA5-16130) in Flow

Flow cytometry of HPa1 in enzyme dispersed human pancreas cells. Samples were incubated in HPa1 monoclonal antibody (Product # MA5-16130).



HPa1 Antibody (MA5-16130) in Flow

Flow cytometry of HPa1 in KB, KB-VCR (fixed in 4% paraformaldehyde). Samples were incubated in HPa1 monoclonal antibody (Product # MA5-16130). Antibody conjugated to DyLight 550.

[View more figures on thermofisher.com](https://www.thermofisher.com)

Immunohistochemistry (1)

Frontiers in cell and developmental biology	Year 2021
Heparanase Promotes Syndecan-1 Expression to Mediate Fibrillar Collagen and Mammographic Density in Human Breast Tissue Cultured <i>ex vivo</i>.	Species Human
"MA5-16130 was used in Immunohistochemistry to reveal a potential role for HPSE in maintaining MD via its direct regulation of SDC1, which in turn physically tethers collagen into aligned fibers characteristic of MD." Authors: Huang X,Reye G,Momot KI,Blick T,Lloyd T,Tilley WD,Hickey TE,Snell CE,Okolicsanyi RK,Haupt LM,Ferro V, Thompson EW,Hugo HJ	Dilution 1:100

For Research Use Only. Not for use in diagnostic procedures. Not for resale without express authorization. Products are warranted to operate or perform substantially in conformance with published Product specifications in effect at the time of sale, as set forth in the Production documentation, specifications and/or accompanying package inserts ("Documentation"). No claim of suitability for use in applications regulated by FDA is made. The warranty provided herein is valid only when used by properly trained individuals. Unless otherwise stated in the Documentation, this warranty is limited to one year from date of shipment when the Product is subjected to normal, proper and intended usage. This warranty does not extend to anyone other than the Buyer. Any model or sample furnished to Buyer is merely illustrative of the general type and quality of goods and does not represent that any Product will conform to such model or sample. NO OTHER WARRANTIES, EXPRESS OR IMPLIED, ARE GRANTED INCLUDING WITHOUT LIMITATION, IMPLIED WARRANTIES OF MERCHANTABILITY, FITNESS FOR ANY PARTICULAR PURPOSE, OR NON INFRINGEMENT. BUYER'S EXCLUSIVE REMEDY FOR NON-CONFORMING PRODUCTS DURING THE WARRANTY PERIOD IS LIMITED TO REPAIR, REPLACEMENT OF OR REFUND FOR THE NON-CONFORMING PRODUCT(S) AT SELLER'S SOLE OPTION. THERE IS NO OBLIGATION TO REPAIR, REPLACE OR REFUND FOR PRODUCTS AS THE RESULT OF (I) ACCIDENT, DISASTER OR EVENT OF FORCE MAJEURE, (II) MISUSE, FAULT OR NEGLIGENCE OF OR BY BUYER, (III) USE OF THE PRODUCTS IN A MANNER FOR WHICH THEY WERE NOT DESIGNED, OR (IV) IMPROPER STORAGE AND HANDLING OF THE PRODUCTS. Unless otherwise expressly stated on the Product or in the documentation accompanying the Product, the Product is intended for research only and is not to be used for any other purpose, including without limitation, unauthorized commercial uses, in vitro diagnostic uses, ex vivo or in vivo therapeutic uses, or any type of consumption by or application to human or animals.