

# TLR2 Monoclonal Antibody (TL2.1)

## Product Details

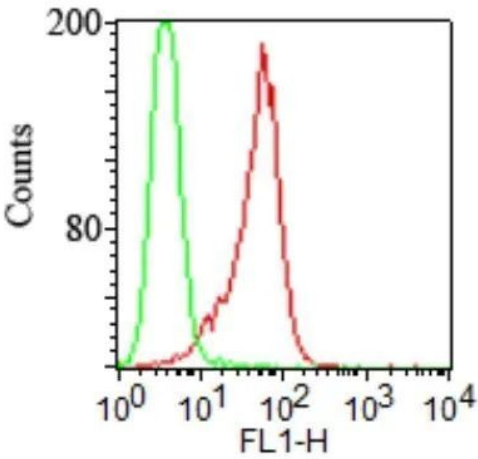
Size	100 µg
Species Reactivity	Dog, Human, Mouse, Rabbit, Rat
Published Species	Human
Host/Isotype	Mouse / IgG2a
Class	Monoclonal
Type	Antibody
Clone	TL2.1
Conjugate	Unconjugated
Immunogen	CHO cells transfected with human TLR2 cDNA
Form	Liquid
Concentration	1 mg/mL
Purification	Protein G
Storage buffer	PBS
Contains	0.02% sodium azide
Storage conditions	Store at 4°C short term. For long term storage, store at -20°C, avoiding freeze/thaw cycles.
RRID	AB_2537718

Applications	Tested Dilution	Publications
Western Blot (WB)	1 - 2 µg/mL	-
Immunohistochemistry (IHC)	-	1 Publication
Immunocytochemistry (ICC/IF)	1:10-1:500	1 Publication
Flow Cytometry (Flow)	1 µg per million cells	1 Publication
ELISA (ELISA)	Assay-Dependent	-
Immunoprecipitation (IP)	2-5 µg	-
Neutralization (Neu)	Assay-Dependent	1 Publication
Functional Assay (FN)	Assay-Dependent	-
Dot blot (DB)	Assay-Dependent	-
In vitro Assay (IV)	Assay-Dependent	-

## Product Specific Information

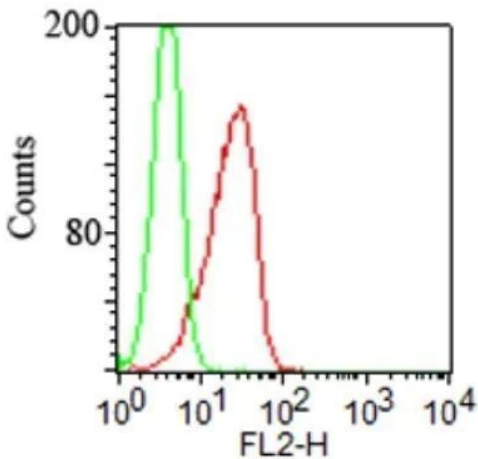
Suggested positive control: antigen standard for TLR2 (transient overexpression lysate), PBMCs, Ramos.

Product Images For TLR2 Monoclonal Antibody (TL2.1)



**TLR2 Antibody (MA5-16200) in Flow**

Flow cytometry of TLR2 in stable HEK293/hTLR2 cells (IML-202, red) and vector control cells (IML-200, green). Samples were incubated in TLR2 monoclonal antibody (Product # MA5-16200) using a dilution of 1 µg/10<sup>6</sup> cells. Image using the FITC form of this antibody.



**TLR2 Antibody (MA5-16200) in Flow**

Flow cytometry of TLR2 in a stable transfected cell line. Samples were incubated in TLR2 monoclonal antibody (Product # MA5-16200) using a dilution of 1 µg /10<sup>6</sup> cells. Green: isotype control. Red: anti-TLR2 antibody (PE conjugated). Image using the Azide Free form of this antibody.

[View more figures on thermofisher.com](https://www.thermofisher.com)

Immunohistochemistry (1)

Asian journal of andrology	Year 2020
<b>Toll-like receptor 10 (TLR10) exhibits suppressive effects on inflammation of prostate epithelial cells.</b>	Species Human
"MA5-16200 was used in Immunocytochemistry-immunoflourescence to study the effects of TLR2 and TLR10 on prostate inflammation."	Dilution 1:400
Authors: Fan Y,Yang L,Wei Q,Ding Y,Tang Z,Tan P,Lin T,Guo D,Qiu S	

Immunocytochemistry (1)

Asian journal of andrology	Year 2020
<b>Toll-like receptor 10 (TLR10) exhibits suppressive effects on inflammation of prostate epithelial cells.</b>	Species Human
"MA5-16200 was used in Immunocytochemistry-immunoflourescence to study the effects of TLR2 and TLR10 on prostate inflammation."	Dilution 1:400
Authors: Fan Y,Yang L,Wei Q,Ding Y,Tang Z,Tan P,Lin T,Guo D,Qiu S	

Flow Cytometry (1)

Journal of leukocyte biology	Year 2016
<b>The protease inhibitor cystatin C down-regulates the release of IL- and TNF- in lipopolysaccharide activated monocytes.</b>	Species Human
"MA516200 was used in flow cytometry to assess the ability of human cystatin C to alter pathogenic activated monocytes and modulate Crohn's disease"	
Authors: Gren ST,Janciauskiene S,Sandeep S,Jonigk D,Kvist PH,Gerwien JG,Håkansson K,Grip O	

Neutralization (1)

Scientific reports	Year 2016
<b>Differential neutrophil responses to bacterial stimuli: Streptococcal strains are potent inducers of heparin-binding protein and resistin-release.</b>	Species Human
"MA5-16200 was used in blocking or activating experiment to examine neutrophil responses such as heparin-binding protein and resistin production during sepsis"	
Authors: Snäll J,Linnér A,Uhlmann J,Siemens N,Ibold H,Janos M,Linder A,Kreikemeyer B,Herwald H,Johansson L,Norrbj-Teglund A	

For Research Use Only. Not for use in diagnostic procedures. Not for resale without express authorization. Products are warranted to operate or perform substantially in conformance with published Product specifications in effect at the time of sale, as set forth in the Production documentation, specifications and/or accompanying package inserts ("Documentation"). No claim of suitability for use in applications regulated by FDA is made. The warranty provided herein is valid only when used by properly trained individuals. Unless otherwise stated in the Documentation, this warranty is limited to one year from date of shipment when the Product is subjected to normal, proper and intended usage. This warranty does not extend to anyone other than the Buyer. Any model or sample furnished to Buyer is merely illustrative of the general type and quality of goods and does not represent that any Product will conform to such model or sample. NO OTHER WARRANTIES, EXPRESS OR IMPLIED, ARE GRANTED INCLUDING WITHOUT LIMITATION, IMPLIED WARRANTIES OF MERCHANTABILITY, FITNESS FOR ANY PARTICULAR PURPOSE, OR NON-INFRINGEMENT. BUYER'S EXCLUSIVE REMEDY FOR NON-CONFORMING PRODUCTS DURING THE WARRANTY PERIOD IS LIMITED TO REPAIR, REPLACEMENT OF OR REFUND FOR THE NON-CONFORMING PRODUCT(S) AT SELLER'S SOLE OPTION. THERE IS NO OBLIGATION TO REPAIR, REPLACE OR REFUND FOR PRODUCTS AS THE RESULT OF (i) ACCIDENT, DISASTER OR EVENT OF FORCE MAJEURE, (ii) MISUSE, FAULT OR NEGLIGENCE OF OR BY BUYER, (iii) USE OF THE PRODUCTS IN A MANNER FOR WHICH THEY WERE NOT DESIGNED, OR (iv) IMPROPER STORAGE AND HANDLING OF THE PRODUCTS. Unless otherwise expressly stated on the Product or in the documentation accompanying the Product, the Product is intended for research only and is not to be used for any other purpose, including without limitation, unauthorized commercial uses, in vitro diagnostic uses, ex vivo or in vivo therapeutic uses, or any type of consumption by or application to human or animals.