

Cytokeratin 8 Monoclonal Antibody (SP102)

Product Details	
Size	500 µL
Species Reactivity	Human
Published Species	Mouse
Host/Isotype	Rabbit / IgG
Class	Monoclonal
Type	Antibody
Clone	SP102
Conjugate	Unconjugated
Immunogen	Synthetic peptide corresponding to C-terminus of human keratin 8.
Form	Liquid
Concentration	0.01 mg/mL
Purification	Protein A/G
Storage buffer	PBS, pH 7.6, with 1% BSA
Contains	0.1% sodium azide
Storage conditions	-20° C, Avoid Freeze/Thaw Cycles
RRID	AB_2537939

Applications	Tested Dilution	Publications
Western Blot (WB)	1:1,000	-
Immunohistochemistry (IHC)	-	1 Publication
Immunohistochemistry (Paraffin) (IHC (P))	1:100	-
Immunohistochemistry (Frozen) (IHC (F))	1:20	-
Immunocytochemistry (ICC/IF)	1:25-1:100	-
Flow Cytometry (Flow)	1:200	1 Publication

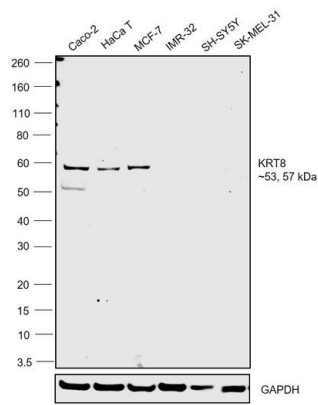
Product Specific Information

Heat-mediated antigen retrieval is recommended prior to staining, using a 10mM citrate buffer, pH 6.0, for 10 minutes followed by cooling at room temperature for 20 min. Following antigen retrieval, incubate samples with primary antibody for 30 min at room temperature. A suggested positive control is breast carcinoma.

Product Images For Cytokeratin 8 Monoclonal Antibody (SP102)

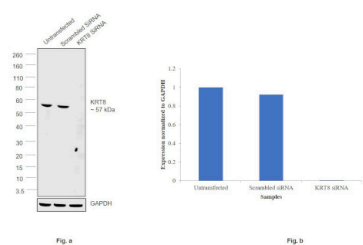
Cytokeratin 8 Antibody (MA5-16420) in WB

Western blot was performed using Anti-Cytokeratin 8 Monoclonal Antibody (SP102)(Product # MA5-16420) and a 53,57kDa band corresponding to Cytokeratin 8 was observed across the cell lines tested except IMR-32, SH-SY5Y and SK-MEL-31. Whole cell extracts (30 µg lysate) of Caco-2 (Lane 1), HaCaT (Lane 2), MCF7 (Lane 3), IMR-32 (Lane 4), SH-SY5Y (Lane 5) and SK-MEL-31 (Lane 6) were electrophoresed using NuPAGE™ 4-12% Bis-Tris Protein Gel (Product # NP0321BOX). Resolved proteins were then transferred onto a Nitrocellulose membrane (Product # LC2002) by iBlot® 2 Dry Blotting System (Product # IB21001). The blot was probed with the primary antibody (1:1000 dilution) and detected by chemiluminescence with Goat anti-Rabbit IgG (Heavy Chain) Superclonal™ Recombinant Secondary Antibody, HRP (Product # A27036, 1:4000 dilution) using the iBright FL 1000 (Product # A32752). Chemiluminescent detection was performed using Novex® ECL Chemiluminescent Substrate Reagent Kit (Product # WP20005).



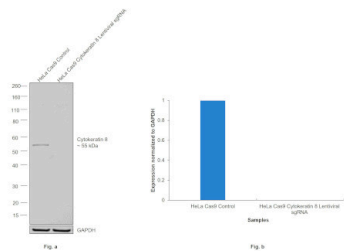
Cytokeratin 8 Antibody (MA5-16420)

Antibody specificity was demonstrated by siRNA mediated knockdown of target protein. Caco-2 cells were transfected with Cytokeratin 8 siRNA and decrease in signal intensity was observed in Western Blot application using Anti-Cytokeratin 8 Monoclonal Antibody (SP102) (Product # MA5-16420). {KD}



Cytokeratin 8 Antibody (MA5-16420)

Antibody specificity was demonstrated by CRISPR-Cas9 mediated knockout of target protein. A loss of signal was observed for target protein in HeLa Cas9 cell line transduced with Cytokeratin 8 Lentiviral sgRNA compared to control cell line using Anti-Cytokeratin 8 Monoclonal Antibody (SP102) (Product # MA5-16420). {KO}



View more figures on thermofisher.com

Immunohistochemistry (1)

Cell death and differentiation	Year 2013
Genetic deletion of caspase-2 accelerates MMTV/c-neu-driven mammary carcinogenesis in mice.	Species Mouse
"MA5-16420 was used in immunohistochemistry to examine the possible role of caspase-2 as a tumor suppressor in the mouse mammary carcinogenesis model"	
Authors: Parsons MJ,McCormick L,Janke L,Howard A,Bouchier-Hayes L,Green DR	

Flow Cytometry (1)

PloS one	Year 2013
A small molecule inhibitor of SRC family kinases promotes simple epithelial differentiation of human pluripotent stem cells.	Dilution 1:200
"MA5-16420 was used in flow cytometry and immunocytochemistry to describe conditions that promote development of hPSC-derived simple epithelial cells"	
Authors: Lian X,Selekman J,Bao X,Hsiao C,Zhu K,Palecek SP	

For Research Use Only. Not for use in diagnostic procedures. Not for resale without express authorization. Products are warranted to operate or perform substantially in conformance with published Product specifications in effect at the time of sale, as set forth in the Production documentation, specifications and/or accompanying package inserts ("Documentation"). No claim of suitability for use in applications regulated by FDA is made. The warranty provided herein is valid only when used by properly trained individuals. Unless otherwise stated in the Documentation, this warranty is limited to one year from date of shipment when the Product is subjected to normal, proper and intended usage. This warranty does not extend to anyone other than the Buyer. Any model or sample furnished to Buyer is merely illustrative of the general type and quality of goods and does not represent that any Product will conform to such model or sample. NO OTHER WARRANTIES, EXPRESS OR IMPLIED, ARE GRANTED INCLUDING WITHOUT LIMITATION, IMPLIED WARRANTIES OF MERCHANTABILITY, FITNESS FOR ANY PARTICULAR PURPOSE, OR NON INFRINGEMENT. BUYER'S EXCLUSIVE REMEDY FOR NON-CONFORMING PRODUCTS DURING THE WARRANTY PERIOD IS LIMITED TO REPAIR, REPLACEMENT OF OR REFUND FOR THE NON-CONFORMING PRODUCT(S) AT SELLER'S SOLE OPTION. THERE IS NO OBLIGATION TO REPAIR, REPLACE OR REFUND FOR PRODUCTS AS THE RESULT OF (i) ACCIDENT, DISASTER OR EVENT OF FORCE MAJEURE, (ii) MISUSE, FAULT OR NEGLIGENCE OF OR BY BUYER, (iii) USE OF THE PRODUCTS IN A MANNER FOR WHICH THEY WERE NOT DESIGNED, OR (iv) IMPROPER STORAGE AND HANDLING OF THE PRODUCTS. Unless otherwise expressly stated on the Product or in the documentation accompanying the Product, the Product is intended for research only and is not to be used for any other purpose, including without limitation, unauthorized commercial uses, in vitro diagnostic uses, ex vivo or in vivo therapeutic uses, or any type of consumption by or application to human or animals.