

MCP-1 Monoclonal Antibody (2D8)

Product Details

Size	100 µg
Species Reactivity	Human, Mouse, Non-human primate
Published Species	Rat, Human, Mouse
Host/Isotype	Mouse / IgG1
Class	Monoclonal
Type	Antibody
Clone	2D8
Conjugate	Unconjugated
Immunogen	Purified recombinant fragment of human CCL2 expressed in E. Coli.
Form	Liquid
Concentration	1 mg/mL
Purification	Protein G
Storage buffer	PBS
Contains	0.05% sodium azide
Storage conditions	Store at 4°C short term. For long term storage, store at -20°C, avoiding freeze/thaw cycles.
RRID	AB_2538512

Applications	Tested Dilution	Publications
Western Blot (WB)	1:500-1:2,000	6 Publications
Immunohistochemistry (IHC)	-	8 Publications
Immunohistochemistry (Paraffin) (IHC (P))	1:200-1:1,000	-
Immunocytochemistry (ICC/IF)	1:200-1:1,000	4 Publications
Flow Cytometry (Flow)	1:200-1:400	2 Publications
ELISA (ELISA)	1:10,000	1 Publication
Neutralization (Neu)	-	2 Publications

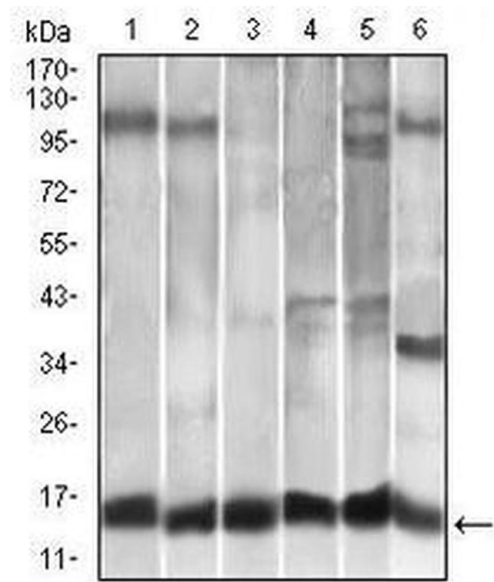
Product Specific Information

MA5-17040 targets CCL2 in indirect ELISA, FACS, ICC, IHC, IF and WB applications and shows reactivity with Human, Mouse, and Non-human primate samples.

The MA5-17040 immunogen is purified recombinant fragment of human CCL2 expressed in E. Coli.

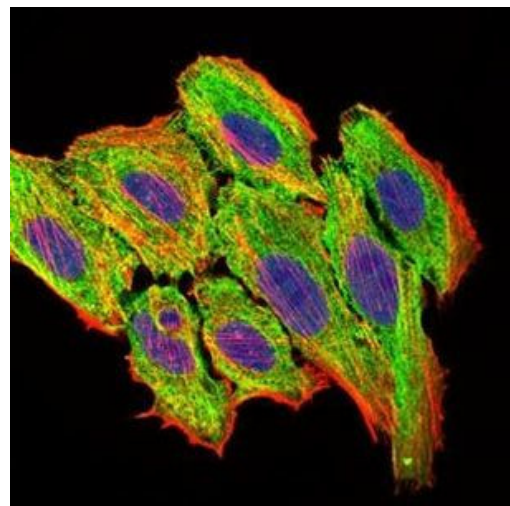
MA5-17040 detects CCL2 which has a predicted molecular weight of approximately 11kDa.

Product Images For MCP-1 Monoclonal Antibody (2D8)



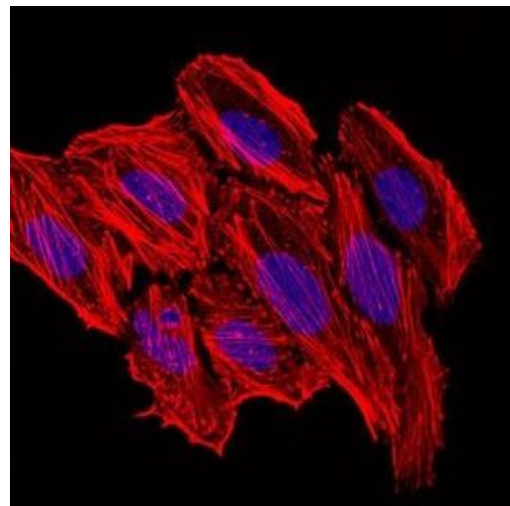
MCP-1 Antibody (MA5-17040) in WB

Western blot analysis of CCL2 using CCL2 monoclonal antibody (Product # MA5-17040) in A549 (1), HeLa (2), Raw264.7 (3), L1210 (4), C6 (5), and COS-7 (6) cell lysate.



MCP-1 Antibody (MA5-17040) in ICC/IF

Immunofluorescence analysis of HepG2 cells using CCL2 monoclonal antibody (Product # MA5-17040) (Green). Blue: DRAQ5 fluorescent DNA dye. Red: actin filaments have been labeled with phalloidin.



MCP-1 Antibody (MA5-17040) in ICC/IF

Immunofluorescence analysis of HepG2 cells. Blue: DRAQ5 fluorescent DNA dye. Red: actin filaments have been labeled with phalloidin.

[View more figures on thermofisher.com](https://www.thermofisher.com)

Western Blot (6)

Scientific reports	Year 2022
Glucosidase inhibitor, Nimbidiol ameliorates renal fibrosis and dysfunction in type-1 diabetes.	
"Published figure using MCP-1 monoclonal antibody (Product # MA5-17040) in Western Blot"	
Authors: Juin SK,Pushpakumar S,Tyagi SC,Sen U	
Molecules and cells	Year 2022
Environment-Sensitive Ectodomain Shedding of Epithin/PRSS14 Increases Metastatic Potential of Breast Cancer Cells by Producing CCL2.	Species Mouse
"MA5-17040 was used in Western Blotting to propose that epithin/PRSS14 can act as an environment-sensing receptor that promotes cancer metastasis by liberating the intracellular domain bearing transcriptional activity under conditions promoting ectodomain shedding."	
Authors: Jang J,Cho EH,Cho Y,Ganzorig B,Kim KY,Kim MG,Kim C	

[View more WB references on thermofisher.com](#)

Immunohistochemistry (8)

Journal of lipid research	Year 2023
Noncanonical atherosclerosis as the driving force in tricuspid aortic valve associated aneurysms - A trace collection.	Species Human
"MA5-17040 was used in Immunohistochemistry-immunofluorescence to show that intimal atherosclerotic changes play a more central role in TAV-TAA formation than previously thought, particularly as the observed alterations do not follow classical patterns."	Dilution 1:500
Authors: Doppler C,Messner B,Mimler T,Schachner B,Rezk M,Ganhör C,Wechselberger C,Müller M,Puh S,Pröll J,Arbeithuber B,Müller T,Zierer A,Bernhard D	
Frontiers in cardiovascular medicine	Year 2023
Mechanical injury accentuates lipid deposition in ApoE^{-/-} mice and advance aortic valve stenosis: A novel modified aortic valve stenosis model.	Species Mouse
"MA5-17040 was used in Immunohistochemistry-immunofluorescence to show thickening and fibrosis of aortic valve leaflets in the hyperlipidemia group after wire injury."	Dilution 1:200
Authors: Wen D,Hu L,Shan J,Zhang H,Hu L,Yuan A,Pu J,Xue S	

[View more IHC references on thermofisher.com](#)

More applications with references on thermofisher.com

- ICC/IF (4)
- Flow (2)
- ELISA (1)
- Neu (2)

For Research Use Only. Not for use in diagnostic procedures. Not for resale without express authorization. Products are warranted to operate or perform substantially in conformance with published Product specifications in effect at the time of sale, as set forth in the Production documentation, specifications and/or accompanying package inserts ("Documentation"). No claim of suitability for use in applications regulated by FDA is made. The warranty provided herein is valid only when used by properly trained individuals. Unless otherwise stated in the Documentation, this warranty is limited to one year from date of shipment when the Product is subjected to normal, proper and intended usage. This warranty does not extend to anyone other than the Buyer. Any model or sample furnished to Buyer is merely illustrative of the general type and quality of goods and does not represent that any Product will conform to such model or sample. NO OTHER WARRANTIES, EXPRESS OR IMPLIED, ARE GRANTED INCLUDING WITHOUT LIMITATION, IMPLIED WARRANTIES OF MERCHANTABILITY, FITNESS FOR ANY PARTICULAR PURPOSE, OR NON INFRINGEMENT. BUYER'S EXCLUSIVE REMEDY FOR NON-CONFORMING PRODUCTS DURING THE WARRANTY PERIOD IS LIMITED TO REPAIR, REPLACEMENT OF OR REFUND FOR THE NON-CONFORMING PRODUCT(S) AT SELLER'S SOLE OPTION. THERE IS NO OBLIGATION TO REPAIR, REPLACE OR REFUND FOR PRODUCTS AS THE RESULT OF (I) ACCIDENT, DISASTER OR EVENT OF FORCE MAJEURE, (II) MISUSE, FAULT OR NEGLIGENCE OF OR BY BUYER, (III) USE OF THE PRODUCTS IN A MANNER FOR WHICH THEY WERE NOT DESIGNED, OR (IV) IMPROPER STORAGE AND HANDLING OF THE PRODUCTS. Unless otherwise expressly stated on the Product or in the documentation accompanying the Product, the Product is intended for research only and is not to be used for any other purpose, including without limitation, unauthorized commercial uses, in vitro diagnostic uses, ex vivo or in vivo therapeutic uses, or any type of consumption by or application to human or animals.