

CK1 epsilon Monoclonal Antibody (AF6C1)

Product Details	
Size	100 µL
Host/Isotype	Mouse / IgG1
Class	Monoclonal
Type	Antibody
Clone	AF6C1
Conjugate	Unconjugated
Immunogen	Recombinant human protein purified from E.coli (His-Casein Kinase Iε)
Form	liquid
Storage conditions	-20°C
RRID	AB_2538699

Applications	Tested Dilution	Publications
Western Blot (WB)	1:2,000	-
ELISA (ELISA)	Assay-dependent	-
Immunoprecipitation (IP)	1 µL/400 µL lysate	-

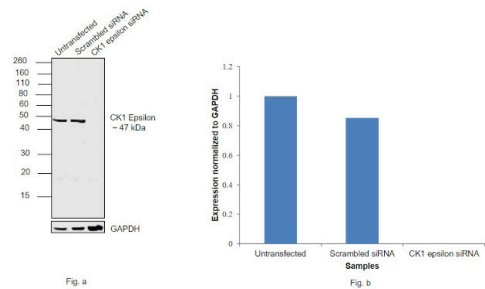
Product Specific Information

A suggested positive control for this product is 293T cells.

Product Images For CK1 epsilon Monoclonal Antibody (AF6C1)

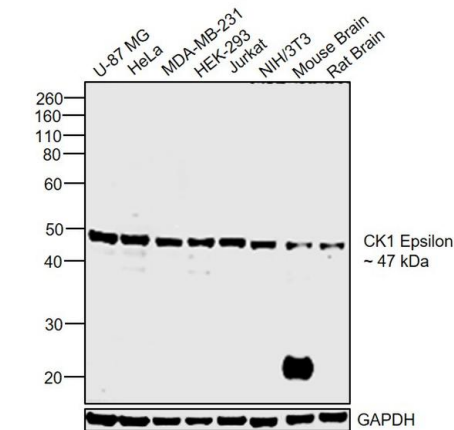
CK1 epsilon Antibody (MA5-17231)

Antibody specificity was demonstrated by siRNA mediated knockdown of target protein. U-87 MG cells were transfected with CK1 epsilon siRNA and decrease in signal intensity was observed in western blot application using Anti-CK1 epsilon Monoclonal Antibody (AF6C1) (Product # MA5-17231). {KD}



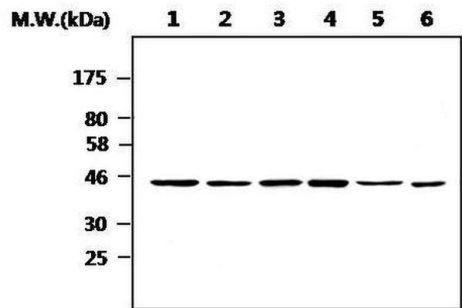
CK1 epsilon Antibody (MA5-17231) in WB

Western blot was performed using Anti-CK1 epsilon Monoclonal Antibody (AF6C1) (Product # MA5-17231) and a 47 kDa band corresponding to CK1 epsilon was observed across all the cell lines and tissues tested. Whole cell extracts (30 µg lysate) of U-87 MG (Lane 1), HeLa (Lane 2), MDA-MB-231 (Lane 3), HEK-293 (Lane 4), Jurkat (Lane 5), NIH/3T3 (Lane 6), tissue extracts of Mouse Brain (Lane 7) and Rat Brain (Lane 8) were electrophoresed using NuPAGE™ 4-12% Bis-Tris Protein Gel (Product # NP0322BOX). Resolved proteins were then transferred onto a nitrocellulose membrane (Product # IB23001) by iBlot® 2 Dry Blotting System (Product # IB21001). The blot was probed with the primary antibody (1:2000 dilution) and detected by chemiluminescence with Goat anti-Mouse IgG (H+L), Superclonal™ Recombinant Secondary Antibody, HRP (Product # A28177, 1:4000 dilution) using the iBright FL 1000 (Product # A32752). Chemiluminescent detection was performed using Novex® ECL Chemiluminescent Substrate Reagent Kit (Product # WP20005).



CK1 epsilon Antibody (MA5-17231) in WB

Western blot analysis of Casein kinase 1 e using anti-Casein kinase 1 e monoclonal antibody (Product # MA5-17231) on (Lane 1) HeLa Cell lysate, (Lane 2) Ramos Cell lysate, (Lane 3) A431 Cell lysate, (Lane 4) 293T Cell lysate, (Lane 5) Jurkat Cell lysate and (Lane 6) PC12 Cell lysate.



View more figures on thermofisher.com

For Research Use Only. Not for use in diagnostic procedures. Not for resale without express authorization. Products are warranted to operate or perform substantially in conformance with published Product specifications in effect at the time of sale, as set forth in the Production documentation, specifications and/or accompanying package inserts ("Documentation"). No claim of suitability for use in applications regulated by FDA is made. The warranty provided herein is valid only when used by properly trained individuals. Unless otherwise stated in the Documentation, this warranty is limited to one year from date of shipment when the Product is subjected to normal, proper and intended usage. This warranty does not extend to anyone other than the Buyer. Any model or sample furnished to Buyer is merely illustrative of the general type and quality of goods and does not represent that any Product will conform to such model or sample. NO OTHER WARRANTIES, EXPRESS OR IMPLIED, ARE GRANTED INCLUDING WITHOUT LIMITATION, IMPLIED WARRANTIES OF MERCHANTABILITY, FITNESS FOR ANY PARTICULAR PURPOSE, OR NON INFRINGEMENT. BUYER'S EXCLUSIVE REMEDY FOR NON-CONFORMING PRODUCTS DURING THE WARRANTY PERIOD IS LIMITED TO REPAIR, REPLACEMENT OF OR REFUND FOR THE NON-CONFORMING PRODUCT(S) AT SELLER'S SOLE OPTION. THERE IS NO OBLIGATION TO REPAIR, REPLACE OR REFUND FOR PRODUCTS AS THE RESULT OF (i) ACCIDENT, DISASTER OR EVENT OF FORCE MAJEURE, (ii) MISUSE, FAULT OR NEGLIGENCE OF OR BY BUYER, (iii) USE OF THE PRODUCTS IN A MANNER FOR WHICH THEY WERE NOT DESIGNED, OR (iv) IMPROPER STORAGE AND HANDLING OF THE PRODUCTS. Unless otherwise expressly stated on the Product or in the documentation accompanying the Product, the Product is intended for research only and is not to be used for any other purpose, including without limitation, unauthorized commercial uses, in vitro diagnostic uses, ex vivo or in vivo therapeutic uses, or any type of consumption by or application to human or animals.