

Cathepsin D Monoclonal Antibody (AF4G5)

Product Details

Size	100 µL
Species Reactivity	Human, Mouse, Rat
Host/Isotype	Mouse / IgG1, kappa
Class	Monoclonal
Type	Antibody
Clone	AF4G5
Conjugate	Unconjugated
Immunogen	Recombinant human protein purified from E.coli (His-Cathepsin D)
Form	liquid
Concentration	1 mg/mL
Purification	Protein G
Storage buffer	HEPES with 0.15M NaCl, 0.01% BSA, 50% glycerol
Contains	0.03% sodium azide
Storage conditions	-20°C
RRID	AB_2538704

Applications	Tested Dilution	Publications
Western Blot (WB)	0.5 µg/mL	-
Immunocytochemistry (ICC/IF)	2 µg/mL	-

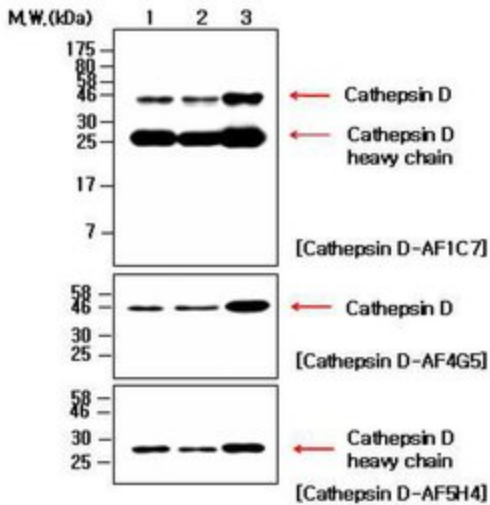
Product Specific Information

A suggested positive control for this product is SK-BR3 cells.

Advanced Verification Data

Cathepsin D Antibody (MA5-17236)

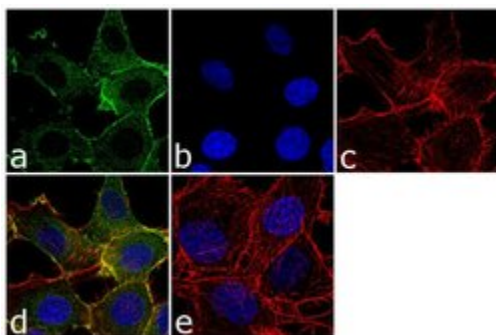
Antibody specificity was demonstrated by showing that antibodies raised against the same target protein perform similarly. Western blot of Cathepsin D using anti-Cathepsin D monoclonal antibody (catalog # MA5-17236) along with another Cathepsin D antibody (clone: AF1C7) shows similar expression of Cathepsin D in the cell lines tested. Independent antibody validation info.



Product Images For Cathepsin D Monoclonal Antibody (AF4G5)

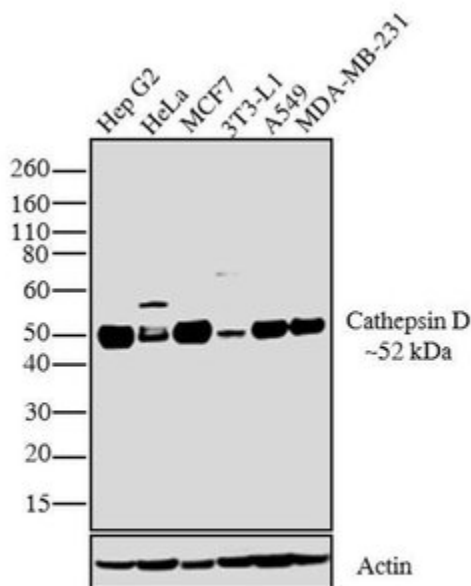
Cathepsin D Antibody (MA5-17236) in ICC/IF

Immunofluorescence analysis of Cathepsin D was performed using 70% confluent log phase T47D cells. The cells were fixed with 4% paraformaldehyde for 10 minutes, permeabilized with 0.1% Triton™ X-100 for 10 minutes, and blocked with 1% BSA for 1 hour at room temperature. The cells were labeled with Cathepsin D (AF4G5) Mouse Monoclonal Antibody (Product # MA5-17236) at 2 µg/mL in 0.1% BSA and incubated for 3 hours at room temperature and then labeled with Goat anti-Mouse IgG (H+L) Superclonal™ Secondary Antibody, Alexa Fluor® 488 conjugate (Product # A28175) at a dilution of 1:2000 for 45 minutes at room temperature (Panel a: green). Nuclei (Panel b: blue) were stained with SlowFade® Gold Antifade Mountant with DAPI (Product # S36938). F-actin (Panel c: red) was stained with Alexa Fluor® 555 Rhodamine Phalloidin (Product # R415, 1:300). Panel d represents the merged image showing cytoplasmic localization. Panel e shows the no primary antibody control. The images were captured at 60X magnification.



Cathepsin D Antibody (MA5-17236) in WB

Western blot analysis was performed on membrane enriched extracts (30 µg lysate) of Hep G2 (Lane 1), HeLa (Lane 2), MCF7 (Lane 3), 3T3-L1 (Lane 4), A549 (Lane 5) and MDA-MB-231 (Lane 6). The blots were probed with Cathepsin D Mouse monoclonal Antibody (Product # MA5-17236, 0.5 µg/mL) and detected by chemiluminescence using Goat anti-Mouse IgG (H+L) Superclonal™ Secondary Antibody, HRP conjugate (Product # A28177, 0.25 µg/mL, 1:4000 dilution). A 52 kDa band corresponding to Cathepsin D was observed across the cell lines tested. Apart from desired band a non-specific band was observed in HeLa cell line. Known quantity of protein samples were electrophoresed using Novex® NuPAGE® 4-12 % Bis-Tris gel (Product # NP0322BOX), XCell SureLock™ Electrophoresis System (Product # EI0002) and Novex® Sharp Pre-Stained Protein Standard (Product # LC5800). Resolved proteins were then transferred onto a nitrocellulose membrane with iBlot® 2 Dry Blotting System (Product # IB21001). The membrane was probed with the relevant primary and secondary Antibody following blocking with 5% skimmed milk. Chemiluminescent detection was performed using SuperSignal™ West Dura Extended Duration Substrate (Product # 34076).



[View more figures on thermofisher.com](https://www.thermofisher.com)

For Research Use Only. Not for use in diagnostic procedures. Not for resale without express authorization. Products are warranted to operate or perform substantially in conformance with published Product specifications in effect at the time of sale, as set forth in the Production documentation, specifications and/or accompanying package inserts ("Documentation"). No claim of suitability for use in applications regulated by FDA is made. The warranty provided herein is valid only when used by properly trained individuals. Unless otherwise stated in the Documentation, this warranty is limited to one year from date of shipment when the Product is subjected to normal, proper and intended usage. This warranty does not extend to anyone other than the Buyer. Any model or sample furnished to Buyer is merely illustrative of the general type and quality of goods and does not represent that any Product will conform to such model or sample. NO OTHER WARRANTIES, EXPRESS OR IMPLIED, ARE GRANTED INCLUDING WITHOUT LIMITATION, IMPLIED WARRANTIES OF MERCHANTABILITY, FITNESS FOR ANY PARTICULAR PURPOSE, OR NON INFRINGEMENT. BUYER'S EXCLUSIVE REMEDY FOR NON-CONFORMING PRODUCTS DURING THE WARRANTY PERIOD IS LIMITED TO REPAIR, REPLACEMENT OF OR REFUND FOR THE NON-CONFORMING PRODUCT(S) AT SELLER'S SOLE OPTION. THERE IS NO OBLIGATION TO REPAIR, REPLACE OR REFUND FOR PRODUCTS AS THE RESULT OF (I) ACCIDENT, DISASTER OR EVENT OF FORCE MAJEURE, (II) MISUSE, FAULT OR NEGLIGENCE OF OR BY BUYER, (III) USE OF THE PRODUCTS IN A MANNER FOR WHICH THEY WERE NOT DESIGNED, OR (IV) IMPROPER STORAGE AND HANDLING OF THE PRODUCTS. Unless otherwise expressly stated on the Product or in the documentation accompanying the Product, the Product is intended for research only and is not to be used for any other purpose, including without limitation, unauthorized commercial uses, in vitro diagnostic uses, ex vivo or in vivo therapeutic uses, or any type of consumption by or application to human or animals.