

CD8 alpha Monoclonal Antibody (CT-CD8a), PE-Cyanine5

Product Details	
Size	100 µg
Species Reactivity	Mouse
Published Species	Mouse
Host/Isotype	Rat / IgG2a
Class	Monoclonal
Type	Antibody
Clone	CT-CD8a
Conjugate	PE-Cyanine5
Excitation/Emission Max	568/666 nm
Immunogen	Mouse CD8a
Form	Liquid
Concentration	0.2 mg/mL
Purification	Protein G
Storage buffer	PBS with 4-5mg/mL BSA
Contains	0.02% sodium azide
Storage conditions	4° C, do not freeze
RRID	AB_2538991

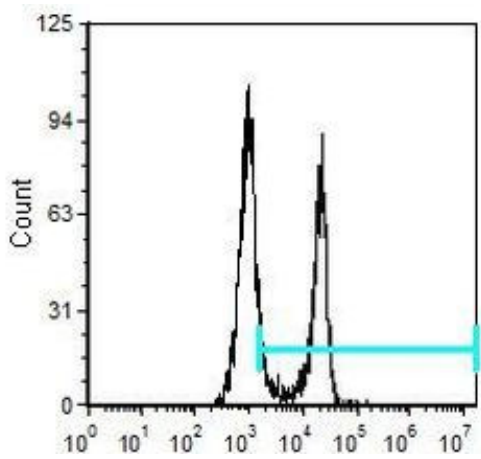
Applications	Tested Dilution	Publications
Immunocytochemistry (ICC/IF)	-	1 Publication
Flow Cytometry (Flow)	1.0 µg/1x10^6 cells	1 Publication

Product Specific Information

MA5-17601 targets CD8a/T subset NK in FACS applications and shows reactivity with Mouse samples.

The MA5-17601 immunogen is mouse CD8a.

Product Images For CD8 alpha Monoclonal Antibody (CT-CD8a), PE-Cyanine5



CD8 alpha Antibody (MA5-17601) in Flow
Flow cytometric analysis of Spleen cells stained using anti-CD8a/T subset NK Monoclonal Antibody (Product # MA5-17601) at a 1.0 µg/10⁶ cells dilution.

2 References

Immunocytochemistry (1)

<p>Nature protocols</p> <p>A protocol for mosaic analysis with a repressible cell marker (MARCM) in Drosophila.</p> <p>"MA5-17601 was used in immunocytochemistry to discuss the uses of mosaic analysis with a repressible cell marker (MARCM)"</p> <p>Authors: Wu JS,Luo L</p>	<p>Year 2007</p> <p>Dilution 1:100</p>
---	--

Flow Cytometry (1)

<p>Cell reports methods</p> <p>A mouse model for the study of anti-tumor T cell responses in Kras-driven lung adenocarcinoma.</p> <p>"MA5-17601 was used in Flow Cytometry to report the development of the immunogenic KP × NINJA (inversion inducible joined neoantigen) (KP-NINJA) LUAD model."</p> <p>Authors: Fitzgerald B,Connolly KA,Cui C,Fagerberg E,Mariuzza DL,Hornick NI,Foster GG,William I,Cheung JF,Joshi NS</p>	<p>Year 2021</p> <p>Species Mouse</p>
--	---

For Research Use Only. Not for use in diagnostic procedures. Not for resale without express authorization. Products are warranted to operate or perform substantially in conformance with published Product specifications in effect at the time of sale, as set forth in the Production documentation, specifications and/or accompanying package inserts ("Documentation"). No claim of suitability for use in applications regulated by FDA is made. The warranty provided herein is valid only when used by properly trained individuals. Unless otherwise stated in the Documentation, this warranty is limited to one year from date of shipment when the Product is subjected to normal, proper and intended usage. This warranty does not extend to anyone other than the Buyer. Any model or sample furnished to Buyer is merely illustrative of the general type and quality of goods and does not represent that any Product will conform to such model or sample. NO OTHER WARRANTIES, EXPRESS OR IMPLIED, ARE GRANTED INCLUDING WITHOUT LIMITATION, IMPLIED WARRANTIES OF MERCHANTABILITY, FITNESS FOR ANY PARTICULAR PURPOSE, OR NON INFRINGEMENT. BUYER'S EXCLUSIVE REMEDY FOR NON-CONFORMING PRODUCTS DURING THE WARRANTY PERIOD IS LIMITED TO REPAIR, REPLACEMENT OF OR REFUND FOR THE NON-CONFORMING PRODUCT(S) AT SELLER'S SOLE OPTION. THERE IS NO OBLIGATION TO REPAIR, REPLACE OR REFUND FOR PRODUCTS AS THE RESULT OF (I) ACCIDENT, DISASTER OR EVENT OF FORCE MAJEURE, (II) MISUSE, FAULT OR NEGLIGENCE OF OR BY BUYER, (III) USE OF THE PRODUCTS IN A MANNER FOR WHICH THEY WERE NOT DESIGNED, OR (IV) IMPROPER STORAGE AND HANDLING OF THE PRODUCTS. Unless otherwise expressly stated on the Product or in the documentation accompanying the Product, the Product is intended for research only and is not to be used for any other purpose, including without limitation, unauthorized commercial uses, in vitro diagnostic uses, ex vivo or in vivo therapeutic uses, or any type of consumption by or application to human or animals.