

CD59 Monoclonal Antibody (1F5), FITC

| Product Details | |
|--------------------|--|
| Size | 100 µg |
| Species Reactivity | Human |
| Host/Isotope | Mouse / IgG1 |
| Class | Monoclonal |
| Type | Antibody |
| Clone | 1F5 |
| Conjugate | FITC |
| Immunogen | Mouse pre-B tumour cells (RAW112) |
| Form | Liquid |
| Concentration | 0.1 mg/mL |
| Purification | Protein G |
| Storage buffer | PBS with 4-5mg/mL BSA |
| Contains | 0.02% sodium azide |
| Storage Conditions | Store at 4°C short term. For long term storage, store at -20°C, avoiding freeze/thaw cycles. |
| RRID | AB_2539128 |

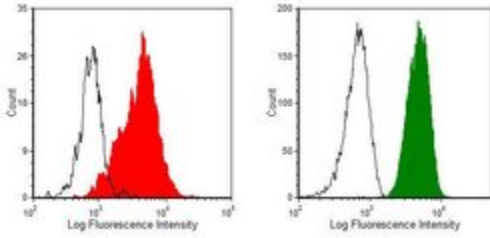
| Applications | Tested Dilution | Publications |
|-----------------------|--------------------------------|--------------|
| Flow Cytometry (Flow) | 1.0 µg/1x10 ⁶ cells | - |

Product Specific Information

MA5-17738 targets CD59/Protectin in FACS applications and shows reactivity with Human samples.

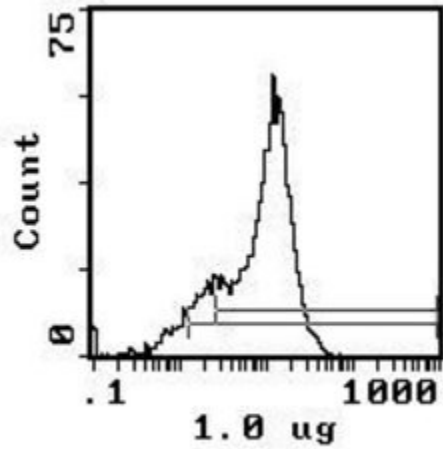
The MA5-17738 immunogen is mouse pre-B tumour cells (RAW112).

Product Images For CD59 Monoclonal Antibody (1F5), FITC



CD59 Antibody (MA5-17738) in Flow

Flow cytometric analysis of human peripheral blood lymphocytes (left) or red blood cells (right) were stained using a CD59/Protectin monoclonal antibody (Product # MA5-17738) (filled histogram) or mouse IgG1 isotype control (open histogram).



CD59 Antibody (MA5-17738) in Flow

Flow cytometric analysis of Human Red Blood Cells staining using anti-CD59 /Protectin Monoclonal Antibody (Product # MA5-17738) at a 1.0 µg/10⁶ cells dilution.

For Research Use Only. Not for use in diagnostic procedures. Not for resale without express authorization. Products are warranted to operate or perform substantially in conformance with published Product specifications in effect at the time of sale, as set forth in the Production documentation, specifications and/or accompanying package inserts ("Documentation"). No claim of suitability for use in applications regulated by FDA is made. The warranty provided herein is valid only when used by properly trained individuals. Unless otherwise stated in the Documentation, this warranty is limited to one year from date of shipment when the Product is subjected to normal, proper and intended usage. This warranty does not extend to anyone other than the Buyer. Any model or sample furnished to Buyer is merely illustrative of the general type and quality of goods and does not represent that any Product will conform to such model or sample. NO OTHER WARRANTIES, EXPRESS OR IMPLIED, ARE GRANTED INCLUDING WITHOUT LIMITATION, IMPLIED WARRANTIES OF MERCHANTABILITY, FITNESS FOR ANY PARTICULAR PURPOSE, OR NON INFRINGEMENT. BUYER'S EXCLUSIVE REMEDY FOR NON-CONFORMING PRODUCTS DURING THE WARRANTY PERIOD IS LIMITED TO REPAIR, REPLACEMENT OF OR REFUND FOR THE NON-CONFORMING PRODUCT(S) AT SELLER'S SOLE OPTION. THERE IS NO OBLIGATION TO REPAIR, REPLACE OR REFUND FOR PRODUCTS AS THE RESULT OF (I) ACCIDENT, DISASTER OR EVENT OF FORCE MAJEURE, (II) MISUSE, FAULT OR NEGLIGENCE OF OR BY BUYER, (III) USE OF THE PRODUCTS IN A MANNER FOR WHICH THEY WERE NOT DESIGNED, OR (IV) IMPROPER STORAGE AND HANDLING OF THE PRODUCTS. Unless otherwise expressly stated on the Product or in the documentation accompanying the Product, the Product is intended for research only and is not to be used for any other purpose, including without limitation, unauthorized commercial uses, in vitro diagnostic uses, ex vivo or in vivo therapeutic uses, or any type of consumption by or application to human or animals.