

LAMP2 Monoclonal Antibody (M3/84)

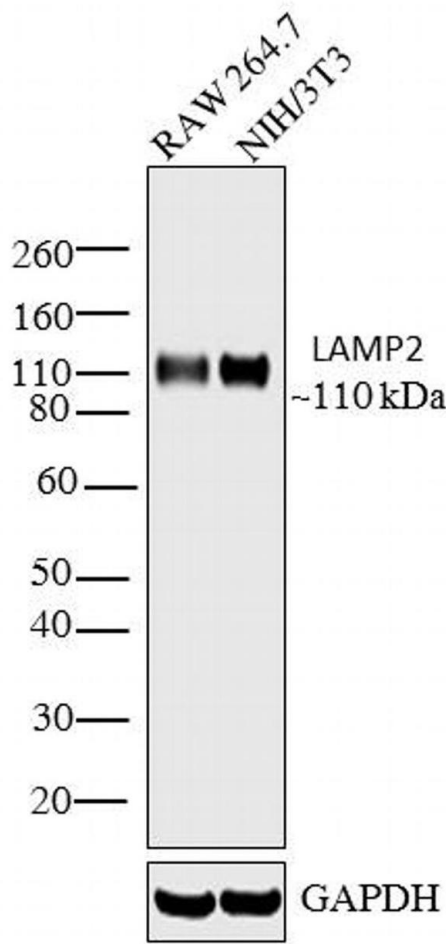
| Product Details | |
|--------------------|----------------------------------------------------------------------------------------------|
| Size | 300 µg |
| Species Reactivity | Mouse |
| Host/Isotype | Rat / IgG1, kappa |
| Class | Monoclonal |
| Type | Antibody |
| Clone | M3/84 |
| Conjugate | Unconjugated |
| Immunogen | Immunoabsorbent purified mouse macrophage glycoprotein fraction. |
| Form | Liquid |
| Concentration | 1 mg/mL |
| Purification | Protein G |
| Storage buffer | PBS |
| Contains | 0.02% sodium azide |
| Storage conditions | Store at 4°C short term. For long term storage, store at -20°C, avoiding freeze/thaw cycles. |
| RRID | AB_2539246 |

| Applications | Tested Dilution | Publications |
|-----------------------------------------|--------------------------------|---------------|
| Western Blot (WB) | Assay-dependent | - |
| Immunohistochemistry (Frozen) (IHC (F)) | Assay-dependent | - |
| Immunocytochemistry (ICC/IF) | - | 1 Publication |
| Flow Cytometry (Flow) | 1.0 µg/1x10 ⁶ cells | - |
| Immunoprecipitation (IP) | Assay-dependent | - |
| Cytotoxicity Assay (CT) | Assay-dependent | - |

Product Images For LAMP2 Monoclonal Antibody (M3/84)

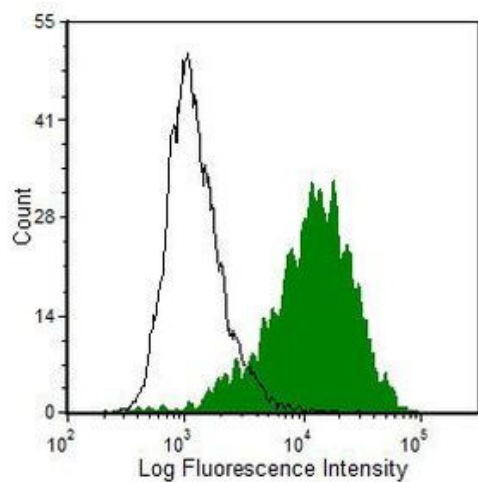
LAMP2 Antibody (MA5-17862) in WB

Western blot analysis was performed on membrane enriched extracts (30 µg lysate) of RAW 264.7 (Lane 1) and NIH/3T3 (Lane 2). The blots were probed with Anti-LAMP2 Monoclonal Antibody (Product # MA5-17861, 1:1000 dilution) and detected by chemiluminescence using Sheep anti-Rat IgG Secondary Antibody, HRP conjugate (Product # PA1-28642, 0.2 µg/mL, 1:5000 dilution). A 110 kDa band corresponding to glycosylated form of LAMP2 was observed across cell lines tested. Known quantity of protein samples were electrophoresed using Novex® NuPAGE® 4-12 % Bis-Tris gel (Product # NP0322BOX), XCell SureLock™ Electrophoresis System (Product # EI0002) and Novex® Sharp Pre-Stained Protein Standard (Product # LC5800). Resolved proteins were then transferred onto a nitrocellulose membrane with iBlot® 2 Dry Blotting System (Product # IB21001). The membrane was probed with the relevant primary and secondary Antibody following blocking with 5% skimmed milk. Chemiluminescent detection was performed using Pierce™ ECL Western Blotting Substrate (Product # 32106).



LAMP2 Antibody (MA5-17862) in Flow

Flow cytometric analysis of Thioglycolate-elicited C57BL/6 mouse peritoneal macrophages were stained using a LAMP-2 monoclonal antibody (Product # MA5-17861) (filled histogram) or rat IgG1 isotype control (open histogram).



Immunocytochemistry (1)

| | |
|------------------------------------------------------------------------------------------------|--------------|
| Nature communications | Year 2020 |
| Macropinocytosis drives T cell growth by sustaining the activation of mTORC1. | |
| "Published figure using LAMP2 monoclonal antibody (Product # MA5-17861) in Immunofluorescence" | |
| Authors: Charpentier JC,Chen D,Lapinski PE,Turner J,Grigorova I,Swanson JA,King PD | |

For Research Use Only. Not for use in diagnostic procedures. Not for resale without express authorization. Products are warranted to operate or perform substantially in conformance with published Product specifications in effect at the time of sale, as set forth in the Production documentation, specifications and/or accompanying package inserts ("Documentation"). No claim of suitability for use in applications regulated by FDA is made. The warranty provided herein is valid only when used by properly trained individuals. Unless otherwise stated in the Documentation, this warranty is limited to one year from date of shipment when the Product is subjected to normal, proper and intended usage. This warranty does not extend to anyone other than the Buyer. Any model or sample furnished to Buyer is merely illustrative of the general type and quality of goods and does not represent that any Product will conform to such model or sample. NO OTHER WARRANTIES, EXPRESS OR IMPLIED, ARE GRANTED INCLUDING WITHOUT LIMITATION, IMPLIED WARRANTIES OF MERCHANTABILITY, FITNESS FOR ANY PARTICULAR PURPOSE, OR NON INFRINGEMENT. BUYER'S EXCLUSIVE REMEDY FOR NON-CONFORMING PRODUCTS DURING THE WARRANTY PERIOD IS LIMITED TO REPAIR, REPLACEMENT OF OR REFUND FOR THE NON-CONFORMING PRODUCT(S) AT SELLER'S SOLE OPTION. THERE IS NO OBLIGATION TO REPAIR, REPLACE OR REFUND FOR PRODUCTS AS THE RESULT OF (I) ACCIDENT, DISASTER OR EVENT OF FORCE MAJEURE, (II) MISUSE, FAULT OR NEGLIGENCE OF OR BY BUYER, (III) USE OF THE PRODUCTS IN A MANNER FOR WHICH THEY WERE NOT DESIGNED, OR (IV) IMPROPER STORAGE AND HANDLING OF THE PRODUCTS. Unless otherwise expressly stated on the Product or in the documentation accompanying the Product, the Product is intended for research only and is not to be used for any other purpose, including without limitation, unauthorized commercial uses, in vitro diagnostic uses, ex vivo or in vivo therapeutic uses, or any type of consumption by or application to human or animals.