

YES1 Monoclonal Antibody (3C6)

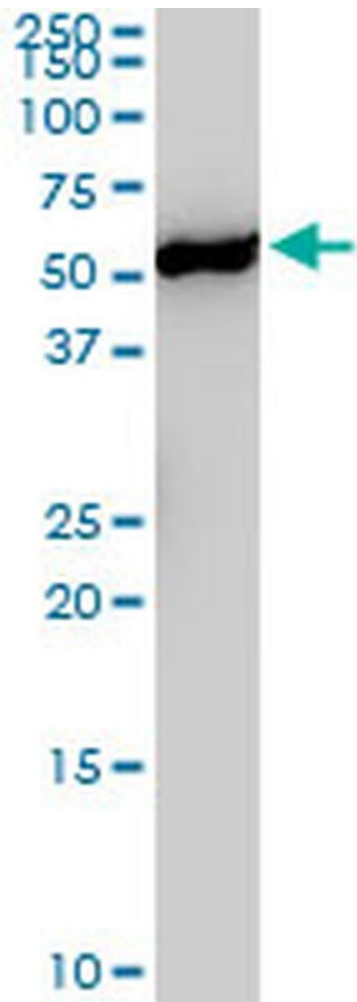
Product Details	
Size	50 µg
Species Reactivity	Human
Host/Isotype	Mouse / IgG2b, kappa
Class	Monoclonal
Type	Antibody
Clone	3C6
Conjugate	Unconjugated
Immunogen	YES1 (AAH48960, 1 a.a. ~ 80 a.a) partial recombinant protein with GST tag. MW of the GST tag alone is 26 KDa.
Form	Liquid
Concentration	0.5 mg/mL
Purification	Protein A
Storage buffer	PBS, pH 7.4
Contains	no preservative
Storage conditions	-20° C, Avoid Freeze/Thaw Cycles
RRID	AB_2609631

Applications	Tested Dilution	Publications
Western Blot (WB)	1-5 µg/mL	-
ELISA (ELISA)	Assay-Dependent	-
in situ PLA (PLA)	1:50	-

Product Specific Information

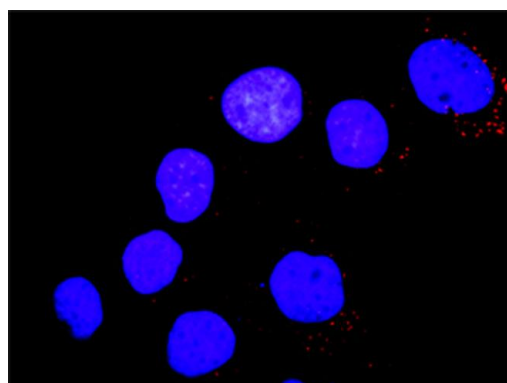
Peptide Sequence: MGCIKSKENK SPAIKYRPEN TPEPVSTSVS HYGAEPPTVS PCPSSSAKGT AVNFSSLMT
PFGGSSGVTP FGGASSFSV

Product Images For YES1 Monoclonal Antibody (3C6)



YES1 Antibody (MA5-20232) in WB

Western blot analysis of YES1 in cell lysate from HeLa S3 NE cells, using a anti-YES1 monoclonal antibody (Product # MA5-20232).

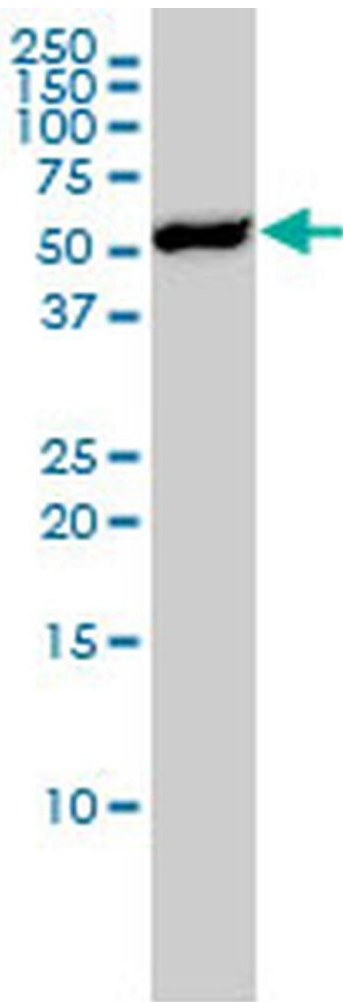


YES1 Antibody (MA5-20232) in PLA

Proximity ligation assay of YES1 and PTK2B protein-protein interactions in Huh7 cells. Sample was incubated with YES1 monoclonal antibody (Product # MA5-20232) using 1:50 dilution. PTK2B used a dilution of 1:1200 followed by DAPI.

YES1 Antibody (MA5-20232) in WB

Western blot analysis of YES1 in cell lysate from Jurkat cells, using a anti-YES1 monoclonal antibody (Product # MA5-20232).



For Research Use Only. Not for use in diagnostic procedures. Not for resale without express authorization. Products are warranted to operate or perform substantially in conformance with published Product specifications in effect at the time of sale, as set forth in the Production documentation, specifications and/or accompanying package inserts ("Documentation"). No claim of suitability for use in applications regulated by FDA is made. The warranty provided herein is valid only when used by properly trained individuals. Unless otherwise stated in the Documentation, this warranty is limited to one year from date of shipment when the Product is subjected to normal, proper and intended usage. This warranty does not extend to anyone other than the Buyer. Any model or sample furnished to Buyer is merely illustrative of the general type and quality of goods and does not represent that any Product will conform to such model or sample. NO OTHER WARRANTIES, EXPRESS OR IMPLIED, ARE GRANTED INCLUDING WITHOUT LIMITATION, IMPLIED WARRANTIES OF MERCHANTABILITY, FITNESS FOR ANY PARTICULAR PURPOSE, OR NON-INFRINGEMENT. BUYER'S EXCLUSIVE REMEDY FOR NON-CONFORMING PRODUCTS DURING THE WARRANTY PERIOD IS LIMITED TO REPAIR, REPLACEMENT OF OR REFUND FOR THE NON-CONFORMING PRODUCT(S) AT SELLER'S SOLE OPTION. THERE IS NO OBLIGATION TO REPAIR, REPLACE OR REFUND FOR PRODUCTS AS THE RESULT OF (i) ACCIDENT, DISASTER OR EVENT OF FORCE MAJEURE, (ii) MISUSE, FAULT OR NEGLIGENCE OF OR BY BUYER, (iii) USE OF THE PRODUCTS IN A MANNER FOR WHICH THEY WERE NOT DESIGNED, OR (iv) IMPROPER STORAGE AND HANDLING OF THE PRODUCTS. Unless otherwise expressly stated on the Product or in the documentation accompanying the Product, the Product is intended for research only and is not to be used for any other purpose, including without limitation, unauthorized commercial uses, in vitro diagnostic uses, ex vivo or in vivo therapeutic uses, or any type of consumption by or application to human or animals.