

CD166 Monoclonal Antibody (105902), Alexa Fluor™ 488

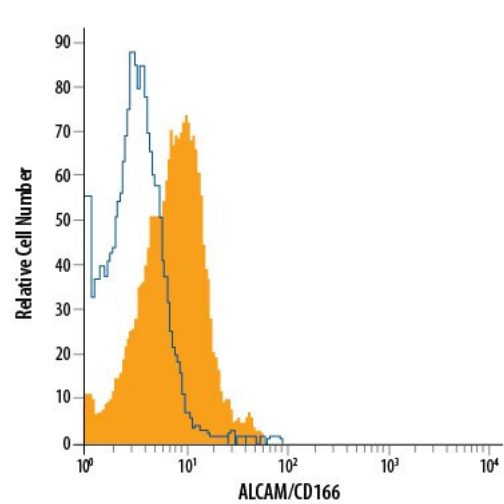
Product Details	
Size	100 Tests
Species Reactivity	Human
Published Species	Human
Host/Isotype	Mouse / IgG1
Class	Monoclonal
Type	Antibody
Clone	105902
Conjugate	Alexa Fluor™ 488
Excitation/Emission Max	499/520 nm
Immunogen	Mouse myeloma cell line NS0-derived recombinant human ALCAM/CD166 Trp28-Ala526
Form	Liquid
Purification	Protein A/G
Storage buffer	Buffered saline solution with BSA
Contains	0.09% sodium azide
Storage conditions	4° C, store in dark, DO NOT FREEZE!
RRID	AB_2607901

Applications	Tested Dilution	Publications
Flow Cytometry (Flow)	5 µL per million cells	1 Publication

Product Specific Information

This antibody shows approximately 50% cross-reactivity with recombinant mouse OCAM and no cross-reactivity with recombinant human (rh) BCAM, rhEpCAM, rhMCAM, or rhNCAM-L1.

Product Images For CD166 Monoclonal Antibody (105902), Alexa Fluor™ 488



CD166 Antibody (MA5-23565) in Flow
Flow cytometry of CD166 in Human peripheral blood lymphocytes. Samples were incubated in CD166 monoclonal antibody (Product # MA5-23565) or isotype control antibody. Antibody conjugated to Alexa Fluor® 488.

[View more figures on thermofisher.com](#)

1 Reference

Flow Cytometry (1)

EMBO molecular medicine		Year 2019
The mitochondrial deoxyguanosine kinase is required for cancer cell stemness in lung adenocarcinoma.		Species Human
"MA5-23565 was used in Flow cytometry/Cell sorting to identify the role of mitochondrial deoxynucleotide triphosphate metabolism in lunge cancer tumor growth and progression."		Dilution 1:200
Authors: Lin S,Huang C,Sun J,Boltt O,Wang X,Martine E,Kang J,Taylor MD,Fang B,Singh PK,Koomen J,Hao J,Yang S		

For Research Use Only. Not for use in diagnostic procedures. Not for resale without express authorization. Products are warranted to operate or perform substantially in conformance with published Product specifications in effect at the time of sale, as set forth in the Production documentation, specifications and/or accompanying package inserts ("Documentation"). No claim of suitability for use in applications regulated by FDA is made. The warranty provided herein is valid only when used by properly trained individuals. Unless otherwise stated in the Documentation, this warranty is limited to one year from date of shipment when the Product is subjected to normal, proper and intended usage. This warranty does not extend to anyone other than the Buyer. Any model or sample furnished to Buyer is merely illustrative of the general type and quality of goods and does not represent that any Product will conform to such model or sample. NO OTHER WARRANTIES, EXPRESS OR IMPLIED, ARE GRANTED INCLUDING WITHOUT LIMITATION, IMPLIED WARRANTIES OF MERCHANTABILITY, FITNESS FOR ANY PARTICULAR PURPOSE, OR NON INFRINGEMENT. BUYER'S EXCLUSIVE REMEDY FOR NON-CONFORMING PRODUCTS DURING THE WARRANTY PERIOD IS LIMITED TO REPAIR, REPLACEMENT OF OR REFUND FOR THE NON-CONFORMING PRODUCT(S) AT SELLER'S SOLE OPTION. THERE IS NO OBLIGATION TO REPAIR, REPLACE OR REFUND FOR PRODUCTS AS THE RESULT OF (i) ACCIDENT, DISASTER OR EVENT OF FORCE MAJEURE, (ii) MISUSE, FAULT OR NEGLIGENCE OF OR BY BUYER, (iii) USE OF THE PRODUCTS IN A MANNER FOR WHICH THEY WERE NOT DESIGNED, OR (iv) IMPROPER STORAGE AND HANDLING OF THE PRODUCTS. Unless otherwise expressly stated on the Product or in the documentation accompanying the Product, the Product is intended for research only and is not to be used for any other purpose, including without limitation, unauthorized commercial uses, in vitro diagnostic uses, ex vivo or in vivo therapeutic uses, or any type of consumption by or application to human or animals.