

CHRDL2 Monoclonal Antibody (328905)

Product Details	
Size	100 µg
Species Reactivity	Mouse
Host/Isotype	Rat / IgG2A
Class	Monoclonal
Type	Antibody
Clone	328905
Conjugate	Unconjugated
Immunogen	Mouse myeloma cell line NS0-derived recombinant mouse Chordin-like 2/CHRDL2 Gln24-Leu426
Form	Lyophilized
Concentration	0.5 mg/mL
Purification	Protein A/G
Storage buffer	PBS with 5% trehalose
Contains	No Preservative
Storage conditions	-20° C, Avoid Freeze/Thaw Cycles
RRID	AB_2606392

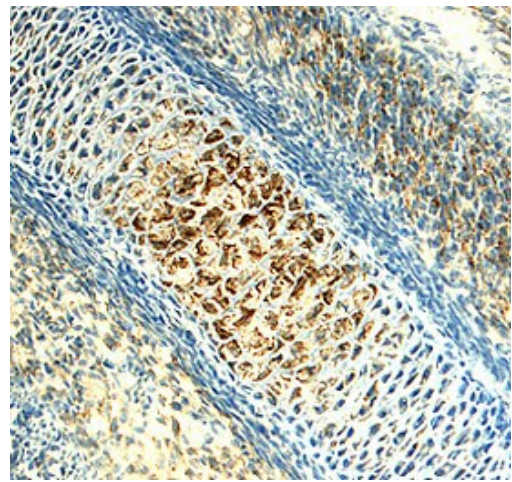
Applications	Tested Dilution	Publications
Western Blot (WB)	1 µg/mL	-
Immunohistochemistry (Frozen) (IHC (F))	8-25 µg/mL	-
Immunoprecipitation (IP)	25 µg/mL	-

Product Specific Information

In direct ELISAs and Western blots, no cross-reactivity with recombinant human CHRDL2, recombinant mouse (rm) CHRDL1, or rmChordin is observed.

Reconstitute at 0.5 mg/mL in sterile PBS.

Product Images For CHRDL2 Monoclonal Antibody (328905)



CHRDL2 Antibody (MA5-24056) in IHC (F)
Immunohistochemical analysis of CHRDL2 in immersion fixed frozen sections of embryonic mouse cartilage (15 d.p.c.). Samples were incubated in CHRDL2 monoclonal antibody (Product # MA5-24056) using a dilution of 25 µg/mL overnight at 4 °C. Tissue was stained with the Anti-Rat HRP-DAB Cell & Tissue Staining Kit (brown) and counterstained with hematoxylin (blue).

For Research Use Only. Not for use in diagnostic procedures. Not for resale without express authorization. Products are warranted to operate or perform substantially in conformance with published Product specifications in effect at the time of sale, as set forth in the Production documentation, specifications and/or accompanying package inserts ("Documentation"). No claim of suitability for use in applications regulated by FDA is made. The warranty provided herein is valid only when used by properly trained individuals. Unless otherwise stated in the Documentation, this warranty is limited to one year from date of shipment when the Product is subjected to normal, proper and intended usage. This warranty does not extend to anyone other than the Buyer. Any model or sample furnished to Buyer is merely illustrative of the general type and quality of goods and does not represent that any Product will conform to such model or sample. NO OTHER WARRANTIES, EXPRESS OR IMPLIED, ARE GRANTED INCLUDING WITHOUT LIMITATION, IMPLIED WARRANTIES OF MERCHANTABILITY, FITNESS FOR ANY PARTICULAR PURPOSE, OR NON INFRINGEMENT. BUYER'S EXCLUSIVE REMEDY FOR NON-CONFORMING PRODUCTS DURING THE WARRANTY PERIOD IS LIMITED TO REPAIR, REPLACEMENT OF OR REFUND FOR THE NON-CONFORMING PRODUCT(S) AT SELLER'S SOLE OPTION. THERE IS NO OBLIGATION TO REPAIR, REPLACE OR REFUND FOR PRODUCTS AS THE RESULT OF (i) ACCIDENT, DISASTER OR EVENT OF FORCE MAJEURE, (ii) MISUSE, FAULT OR NEGLIGENCE OF OR BY BUYER, (iii) USE OF THE PRODUCTS IN A MANNER FOR WHICH THEY WERE NOT DESIGNED, OR (iv) IMPROPER STORAGE AND HANDLING OF THE PRODUCTS. Unless otherwise expressly stated on the Product or in the documentation accompanying the Product, the Product is intended for research only and is not to be used for any other purpose, including without limitation, unauthorized commercial uses, in vitro diagnostic uses, ex vivo or in vivo therapeutic uses, or any type of consumption by or application to human or animals.