

Calbindin D28K Monoclonal Antibody (401025)

Product Details	
Size	100 µg
Species Reactivity	Human
Published Species	Mouse
Host/Isotype	Mouse / IgG2B
Class	Monoclonal
Type	Antibody
Clone	401025
Conjugate	Unconjugated
Immunogen	E. coli-derived recombinant human Calbindin D Met1-Asn261
Form	Lyophilized
Concentration	0.5 mg/mL
Purification	Protein A/G
Storage buffer	PBS with 5% trehalose
Contains	No Preservative
Storage conditions	-20° C, Avoid Freeze/Thaw Cycles
RRID	AB_2609695

Applications	Tested Dilution	Publications
Western Blot (WB)	0.25-10 µg/mL	-
Immunohistochemistry (IHC)	-	1 Publication
Immunohistochemistry (Paraffin) (IHC (P))	8-25 µg/mL	-
Immunohistochemistry (Frozen) (IHC (F))	8-25 µg/mL	-

Product Specific Information

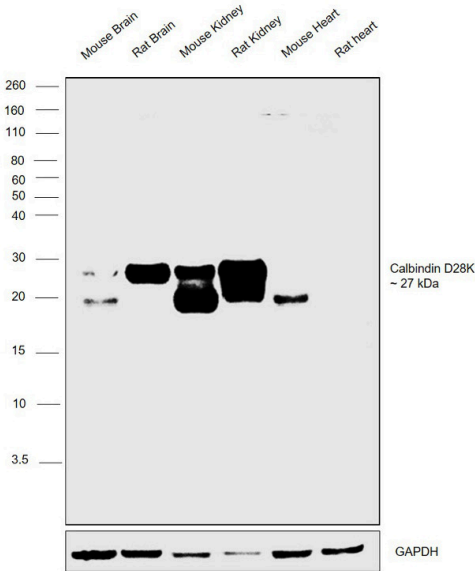
In direct ELISAs and Western blots, this antibody does not cross-react with recombinant human S100P.

Reconstitute at 0.5 mg/mL in sterile PBS.

Product Images For Calbindin D28K Monoclonal Antibody (401025)

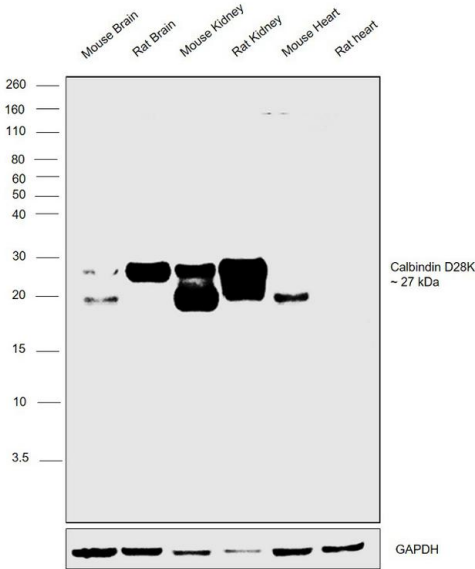
Calbindin D28K Antibody (MA5-24135)

Antibody specificity was demonstrated by detection of differential basal expression of the target across tissue tested owing to their inherent genetic constitution. Relative expression of Calbindin D28 was observed in Mouse Brain, Rat Brain, Mouse Kidney and Rat Kidney in comparison to Mouse Heart and Rat Heart using Anti-Calbindin D28 Monoclonal Antibody (Product # MA5-24135) in Western Blot. {RE}



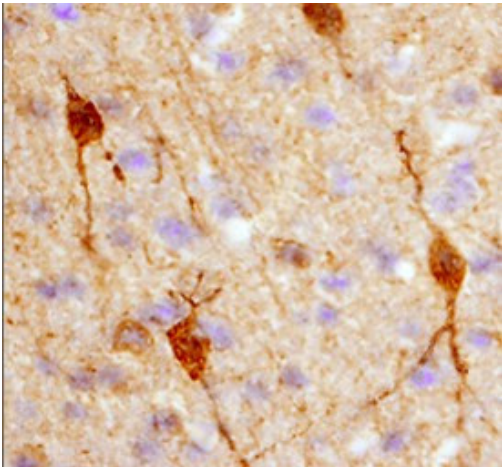
Calbindin D28K Antibody (MA5-24135) in WB

Western blot was performed using Anti-Calbindin D28K Polyclonal Antibody (Product # MA5-24135) and a 27 kDa band corresponding to Calbindin D28K was observed across tissues tested except Mouse and Rat Heart which are reported to be negative. Whole cell extracts (30 µg lysate) of Mouse Brain (Lane 1), Rat Brain (Lane 2), Mouse Kidney (Lane 3), Rat Kidney (Lane 4), Mouse Heart (Lane 5) and Rat Heart (Lane 6) were electrophoresed using Novex® NuPAGE® 4-12 % Bis-Tris gel (Product # NP0321BOX). Resolved proteins were then transferred onto a nitrocellulose membrane (Product # IB23001) by iBlot® 2 Dry Blotting System (Product # IB21001). The blot was probed with the primary antibody (5 µg/mL) and detected by chemiluminescence with Goat anti-Mouse IgG (Heavy Chain), Superclonal™ Recombinant Secondary Antibody, HRP conjugate (Product # A27036, 1:4,000 dilution) using the iBright FL 1000 (Product # A32752). Chemiluminescent detection was performed using Novex® ECL Chemiluminescent Substrate Reagent Kit (Product # WP20005).



Calbindin D28K Antibody (MA5-24135) in IHC (F)

Immunohistochemical analysis of Calbindin D28K in perfusion fixed frozen sections of rat brain (hypothalamus). Samples were incubated in Calbindin D28K monoclonal antibody (Product # MA5-24135) using a dilution of 25 µg/mL overnight at 4 °C. Tissue was stained with the Anti-Mouse HRP-DAB Cell & Tissue Staining Kit (brown) and counterstained with hematoxylin (blue).



View more figures on thermofisher.com

Immunohistochemistry (1)

Brain structure & function	Year 2019
Hyper-diversity of CRH interneurons in mouse hippocampus.	Species Mouse
"MA5-24135 was used in Immunohistochemistry to conclude that the observed heterogeneity suggests that distinct CRH interneuron subtypes may have specific functional roles in the both physiological and pathophysiological hippocampal processes."	Dilution 1:8000
Authors: Gunn BG, Sanchez GA, Lynch G, Baram TZ, Chen Y	

For Research Use Only. Not for use in diagnostic procedures. Not for resale without express authorization. Products are warranted to operate or perform substantially in conformance with published Product specifications in effect at the time of sale, as set forth in the Production documentation, specifications and/or accompanying package inserts ("Documentation"). No claim of suitability for use in applications regulated by FDA is made. The warranty provided herein is valid only when used by properly trained individuals. Unless otherwise stated in the Documentation, this warranty is limited to one year from date of shipment when the Product is subjected to normal, proper and intended usage. This warranty does not extend to anyone other than the Buyer. Any model or sample furnished to Buyer is merely illustrative of the general type and quality of goods and does not represent that any Product will conform to such model or sample. NO OTHER WARRANTIES, EXPRESS OR IMPLIED, ARE GRANTED INCLUDING WITHOUT LIMITATION, IMPLIED WARRANTIES OF MERCHANTABILITY, FITNESS FOR ANY PARTICULAR PURPOSE, OR NON-INFRINGEMENT. BUYER'S EXCLUSIVE REMEDY FOR NON-CONFORMING PRODUCTS DURING THE WARRANTY PERIOD IS LIMITED TO REPAIR, REPLACEMENT OF OR REFUND FOR THE NON-CONFORMING PRODUCT(S) AT SELLER'S SOLE OPTION. THERE IS NO OBLIGATION TO REPAIR, REPLACE OR REFUND FOR PRODUCTS AS THE RESULT OF (I) ACCIDENT, DISASTER OR EVENT OF FORCE MAJEURE, (II) MISUSE, FAULT OR NEGLIGENCE OF OR BY BUYER, (III) USE OF THE PRODUCTS IN A MANNER FOR WHICH THEY WERE NOT DESIGNED, OR (IV) IMPROPER STORAGE AND HANDLING OF THE PRODUCTS. Unless otherwise expressly stated on the Product or in the documentation accompanying the Product, the Product is intended for research only and is not to be used for any other purpose, including without limitation, unauthorized commercial uses, in vitro diagnostic uses, ex vivo or in vivo therapeutic uses, or any type of consumption by or application to human or animals.