

IL2RG Monoclonal Antibody (633162)

Product Details

Size	100 µg
Species Reactivity	Human
Host/Isotype	Mouse / IgG2b
Class	Monoclonal
Type	Antibody
Clone	633162
Conjugate	Unconjugated
Immunogen	Sf 21-derived recombinant human Common gamma Chain/IL-2 gamma Leu23-Asn254
Form	Lyophilized
Concentration	0.5 mg/mL
Purification	Protein A/G
Storage buffer	PBS with 5% trehalose
Contains	No Preservative
Storage conditions	-20° C, Avoid Freeze/Thaw Cycles
RRID	AB_2608967

Applications

Tested Dilution

Publications

Flow Cytometry (Flow)	2.5 µg per million cells	-
Neutralization (Neu)	0.08-0.4 µg/mL	-

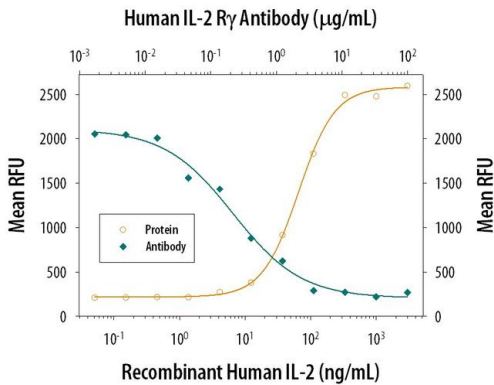
Product Specific Information

In direct ELISAs, no cross-reactivity with recombinant human (rh) IL-2 R alpha, rhIL-2 R beta, rhIL-15 R alpha, recombinant mouse IL-2 R gamma, or recombinant canine IL-2 R alpha is observed. In Western blots, approximately 80% cross-reactivity with recombinant human IL-2 R beta, 50% cross-reactivity with rhIL-15 R alpha and recombinant mouse IL-2 R alpha, and no cross-reactivity with rhIL-2 R alpha is observed.

Reconstitute in sterile PBS to a final concentration of 0.5 mg/mL.

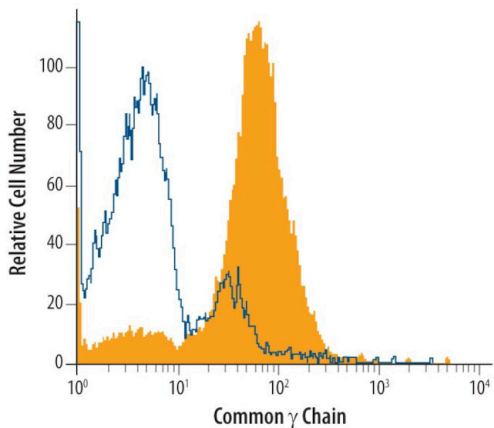
Endotoxin level is <0.10 EU per 1 µg of the antibody by the LAL method.

Product Images For IL2RG Monoclonal Antibody (633162)



IL2RG Antibody (MA5-24286) in Neu

Neutralization of IL2RG in MO7e human megakaryocytic leukemic cell line. Samples were incubated in IL2RG monoclonal antibody (Product # MA5-24286). Recombinant Human IL₂ stimulates proliferation in the MO7e human megakaryocytic leukemic cell line in a dose-dependent manner (orange line). Proliferation elicited by Recombinant Human IL₂ (200 ng/mL) is neutralized (green line) by increasing concentrations of Mouse Anti-Human Common Chain /IL₂ R Monoclonal Antibody. The ND50 is typically 0.08-0.4 μ g/mL.



IL2RG Antibody (MA5-24286) in Flow

Flow cytometry of IL2RG in Human peripheral blood lymphocytes. Samples were incubated in IL2RG monoclonal antibody (Product # MA5-24286) or isotype control antibody followed by Allophycocyanin-conjugated Anti-Mouse IgG F(ab)₂ Secondary Antibody.

For Research Use Only. Not for use in diagnostic procedures. Not for resale without express authorization. Products are warranted to operate or perform substantially in conformance with published Product specifications in effect at the time of sale, as set forth in the Production documentation, specifications and/or accompanying package inserts ("Documentation"). No claim of suitability for use in applications regulated by FDA is made. The warranty provided herein is valid only when used by properly trained individuals. Unless otherwise stated in the Documentation, this warranty is limited to one year from date of shipment when the Product is subjected to normal, proper and intended usage. This warranty does not extend to anyone other than the Buyer. Any model or sample furnished to Buyer is merely illustrative of the general type and quality of goods and does not represent that any Product will conform to such model or sample. NO OTHER WARRANTIES, EXPRESS OR IMPLIED, ARE GRANTED INCLUDING WITHOUT LIMITATION, IMPLIED WARRANTIES OF MERCHANTABILITY, FITNESS FOR ANY PARTICULAR PURPOSE, OR NON INFRINGEMENT. BUYER'S EXCLUSIVE REMEDY FOR NON-CONFORMING PRODUCTS DURING THE WARRANTY PERIOD IS LIMITED TO REPAIR, REPLACEMENT OF OR REFUND FOR THE NON-CONFORMING PRODUCT(S) AT SELLER'S SOLE OPTION. THERE IS NO OBLIGATION TO REPAIR, REPLACE OR REFUND FOR PRODUCTS AS THE RESULT OF (I) ACCIDENT, DISASTER OR EVENT OF FORCE MAJEURE, (II) MISUSE, FAULT OR NEGLIGENCE OF OR BY BUYER, (III) USE OF THE PRODUCTS IN A MANNER FOR WHICH THEY WERE NOT DESIGNED, OR (IV) IMPROPER STORAGE AND HANDLING OF THE PRODUCTS. Unless otherwise expressly stated on the Product or in the documentation accompanying the Product, the Product is intended for research only and is not to be used for any other purpose, including without limitation, unauthorized commercial uses, in vitro diagnostic uses, ex vivo or in vivo therapeutic uses, or any type of consumption by or application to human or animals.