

ACD Monoclonal Antibody (1C11-1A7)

Product Details	
Size	100 µg
Species Reactivity	Human
Host/Isotype	Mouse / IgG1, kappa
Class	Monoclonal
Type	Antibody
Clone	1C11-1A7
Conjugate	Unconjugated
Immunogen	ACD (AAH16904, 1 a.a. ~ 544 a.a) full-length recombinant protein with GST tag. MW of the GST tag alone is 26 KDa.
Form	Liquid
Purification	Protein A
Storage buffer	PBS, pH 7.4
Contains	no preservative
Storage conditions	-20° C, Avoid Freeze/Thaw Cycles
RRID	AB_2633532

Applications	Tested Dilution	Publications
Western Blot (WB)	1-5 µg/mL	-
ELISA (ELISA)	1 ng/mL	-
Immunoprecipitation (IP)	Assay-Dependent	-

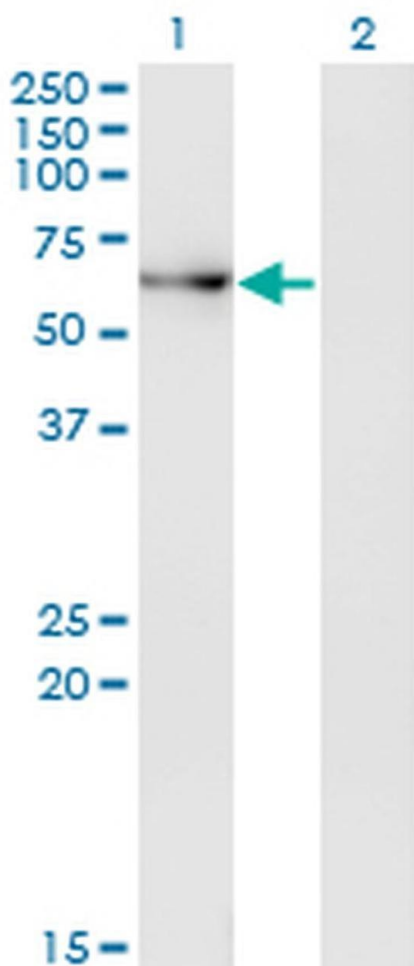
Product Specific Information

Peptide Sequence: MPGRCQSDAA MRVNGPASRA PAGWTSGSLH TGPRAGRPRRA QARGVRGRGL LLRPRPAKEL
PLPRKGGAWA PAGNPGPLHP LGVAVGMAGS GRLVLRPWIR ELILGSETPS SPRAGQLLEV LQDAEAAVAG PSHAPDTS
GATLLVSDGT HSVRCLVTRE ALDTSWEEK EFGFRGTEGR LLLLQDCGVH VQVAEGGAPA EFYLQVDRFS LLPTEQPRLR
VPGCNQDL DV QKKLYDCLEE HLSESTSSNA GLSLSQLLDE MREDQEHQGA LVCLAESCLT LEGPCTAPPV
THWAASRCKA TGEAVYTVPS SMLCISENDQ LILSSLGPCQ RTQGPELPPP DPALQDLSLT LIASPPSSPS SSGTPALPGH
MSSEESGTSI SLLPALSLAA PDPGQRSSSQ PSPAICSAPA TLTPRSPHAS RTPSSPLQSC TPSLSRSHV PSPHQALVTR
PQKPSLEFKE FVGLPCKNRP PFPRTGATRG AQEPCSVWEP PKRHRDGSFAF QYEYEPPTS LCA RVQAARL
PPQLMAWALH FLMDAQPGSE PTPM

Product Images For ACD Monoclonal Antibody (1C11-1A7)

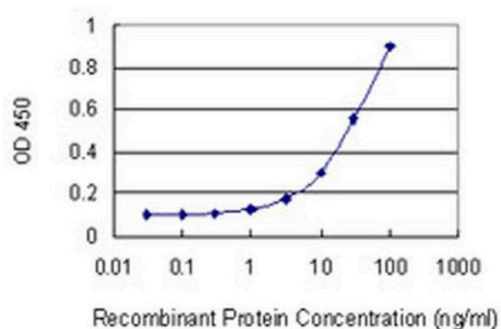
ACD Antibody (MA5-24560) in WB

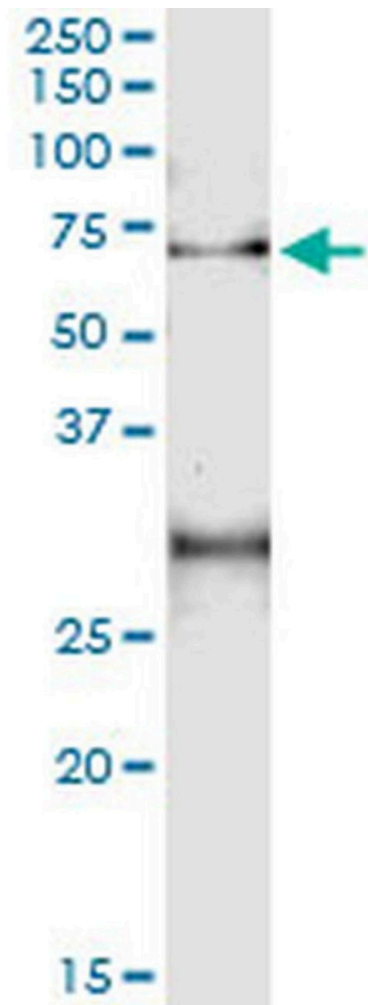
Western blot analysis of CLN2 / TPP1 in transfected 293T cell line. Lane 1: ACD transfected lysate (Predicted MW: 57.7 KDa). Lane 2: Non-transfected lysate. Samples were probed using a Mouse Monoclonal CLN2 / TPP1 (1C11-1A7) Antibody (Product # MA5-24560).



ACD Antibody (MA5-24560) in ELISA

ELISA analysis using recombinant GST tagged CLN2 / TPP1 Antibody (Product # MA5-24560) at 1 ng/mL as the capture antibody.





ACD Antibody (MA5-24560) in IP

Immunoprecipitation of CLN2 / TPP1 transfected lysate using a Mouse Monoclonal CLN2 / TPP1 (1C11-1A7) Antibody and Protein A Magnetic Bead, and immunoblotted with CLN2 / TPP1 MaxPab rabbit polyclonal antibody (Product # MA5-24560).

For Research Use Only. Not for use in diagnostic procedures. Not for resale without express authorization. Products are warranted to operate or perform substantially in conformance with published Product specifications in effect at the time of sale, as set forth in the Production documentation, specifications and/or accompanying package inserts ("Documentation"). No claim of suitability for use in applications regulated by FDA is made. The warranty provided herein is valid only when used by properly trained individuals. Unless otherwise stated in the Documentation, this warranty is limited to one year from date of shipment when the Product is subjected to normal, proper and intended usage. This warranty does not extend to anyone other than the Buyer. Any model or sample furnished to Buyer is merely illustrative of the general type and quality of goods and does not represent that any Product will conform to such model or sample. NO OTHER WARRANTIES, EXPRESS OR IMPLIED, ARE GRANTED INCLUDING WITHOUT LIMITATION, IMPLIED WARRANTIES OF MERCHANTABILITY, FITNESS FOR ANY PARTICULAR PURPOSE, OR NON-INFRINGEMENT. BUYER'S EXCLUSIVE REMEDY FOR NON-CONFORMING PRODUCTS DURING THE WARRANTY PERIOD IS LIMITED TO REPAIR, REPLACEMENT OF OR REFUND FOR THE NON-CONFORMING PRODUCT(S) AT SELLER'S SOLE OPTION. THERE IS NO OBLIGATION TO REPAIR, REPLACE OR REFUND FOR PRODUCTS AS THE RESULT OF (i) ACCIDENT, DISASTER OR EVENT OF FORCE MAJEURE, (ii) MISUSE, FAULT OR NEGLIGENCE OF OR BY BUYER, (iii) USE OF THE PRODUCTS IN A MANNER FOR WHICH THEY WERE NOT DESIGNED, OR (iv) IMPROPER STORAGE AND HANDLING OF THE PRODUCTS. Unless otherwise expressly stated on the Product or in the documentation accompanying the Product, the Product is intended for research only and is not to be used for any other purpose, including without limitation, unauthorized commercial uses, in vitro diagnostic uses, ex vivo or in vivo therapeutic uses, or any type of consumption by or application to human or animals.