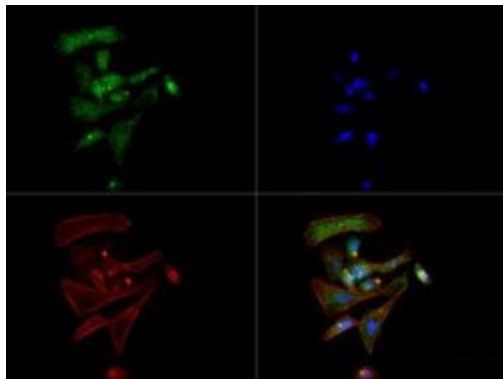


Dopamine Transporter Monoclonal Antibody (mAb16)

Product Details	
Size	100 µL
Species	Human, Mouse, Rat
Expression System	Mouse / IgG1
Class	Monoclonal
Type	Antibody
Clone	mAb16
Conjugate	Unconjugated
Immunogen	Synthetic peptide corresponding to the N-terminus of rat DAT1.
Form	Liquid
Concentration	1 mg/mL
Purification	Protein G
Storage buffer	tris glycine, pH 7.5, with 0.15M NaCl
Contains	0.05% sodium azide
Storage Conditions	Store at 4°C short term. For long term storage, store at -20°C, avoiding freeze/thaw cycles.
RRID	AB_2717269

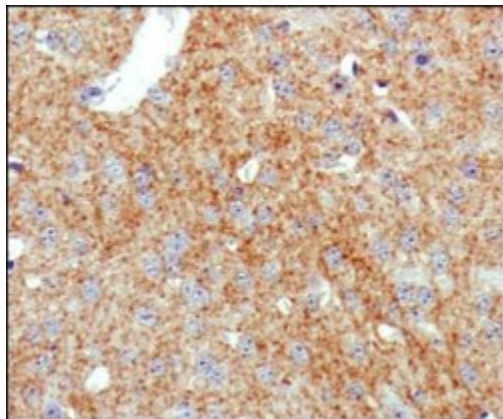
Applications	Tested Dilution	Publications
ELISA (ELISA)	Assay-Dependent	-
Immunocytochemistry (ICC)	1:250	-
Immunofluorescence (IF)	1:250	-
Immunohistochemistry (Paraffin) (IHC (P))	1:100	-
Immunoprecipitation (IP)	Assay-Dependent	-
Western Blot (WB)	1:1000	-

Product Images For Dopamine Transporter Monoclonal Antibody (mAb16)



Dopamine Transporter Antibody (MA5-24796) in IF

Immunofluorescent analysis of SLC6A3/DAT1 in PC12 cells using SLC6A3/DAT1 monoclonal antibody (Product # MA5-24796) with a dilution of 1:250, Phalloidin Alexa Fluor 568 (Red) and DAPI (blue).

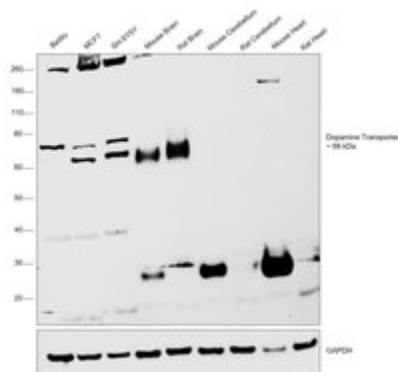


Dopamine Transporter Antibody (MA5-24796) in IHC (P)

Immunohistochemical analysis of SLC6A3/DAT1 in paraffin-embedded human esophageal cancer tissue. Sample was probed with SLC6A3/DAT1 monoclonal antibody (Product # MA5-24796).

Dopamine Transporter Antibody (MA5-24796) in WB

Western blot was performed using anti-Dopamine Transporter Monoclonal Antibody (mAb16) (Product # MA5-24796). A 68 kDa band corresponding to Dopamine Transporter (DAT) was observed across cell lines and brain tissues except Mouse, Rat Cerebellum and Mouse, Rat Heart which are reported to be low to negative expression models for Dopamine Transporter. Another band at 75 kDa was found only in the cell lines which could be another isoform of DAT. Uncharacterized bands at 260, 35, 15 kDa were observed in the samples tested. A band at 25 kDa was observed in mouse tissues which corresponds to circulating IgG in tissues. Membrane enriched extracts (30 µg) of BeWo (Lane 1), MCF7 (Lane 2), SH-SY5Y (Lane 3), tissue extracts of Mouse Brain (Lane 4), Rat Brain (Lane 5), Mouse Cerebellum (Lane 6), Rat Cerebellum (Lane 7), Mouse Heart (Lane 8) and Rat Heart (Lane 9) were electrophoresed using Novex® NuPAGE™ 10% Bis-Tris Protein Gel (Product # NP0302BOX). Resolved proteins were then transferred onto a nitrocellulose membrane (Product # IB23001) by iBlot® 2 Dry Blotting System (Product # IB21001). The blot was probed with primary antibody (1:1000 dilution) and detected by chemiluminescence with Goat anti-Mouse IgG (H+L), Superclonal™ Recombinant Secondary Antibody, HRP (Product # A28177, 1:4000 dilution) using iBright FL 1000 (Product # A32752). Chemiluminescent detection was performed using Novex® ECL Chemiluminescent Substrate Reagent Kit (Product # WP20005).



View more figures on thermofisher.com

For Research Use Only. Not for use in diagnostic procedures. Not for resale without express authorization. Products are warranted to operate or perform substantially in conformance with published Product specifications in effect at the time of sale, as set forth in the Production documentation, specifications and/or accompanying package inserts ("Documentation"). No claim of suitability for use in applications regulated by FDA is made. The warranty provided herein is valid only when used by properly trained individuals. Unless otherwise stated in the Documentation, this warranty is limited to one year from date of shipment when the Product is subjected to normal, proper and intended usage. This warranty does not extend to anyone other than the Buyer. Any model or sample furnished to Buyer is merely illustrative of the general type and quality of goods and does not represent that any Product will conform to such model or sample. NO OTHER WARRANTIES, EXPRESS OR IMPLIED, ARE GRANTED INCLUDING WITHOUT LIMITATION, IMPLIED WARRANTIES OF MERCHANTABILITY, FITNESS FOR ANY PARTICULAR PURPOSE, OR NON INFRINGEMENT. BUYER'S EXCLUSIVE REMEDY FOR NON-CONFORMING PRODUCTS DURING THE WARRANTY PERIOD IS LIMITED TO REPAIR, REPLACEMENT OF OR REFUND FOR THE NON-CONFORMING PRODUCT(S) AT SELLER'S SOLE OPTION. THERE IS NO OBLIGATION TO REPAIR, REPLACE OR REFUND FOR PRODUCTS AS THE RESULT OF (I) ACCIDENT, DISASTER OR EVENT OF FORCE MAJEURE, (II) MISUSE, FAULT OR NEGLIGENCE OF OR BY BUYER, (III) USE OF THE PRODUCTS IN A MANNER FOR WHICH THEY WERE NOT DESIGNED, OR (IV) IMPROPER STORAGE AND HANDLING OF THE PRODUCTS. Unless otherwise expressly stated on the Product or in the documentation accompanying the Product, the Product is intended for research only and is not to be used for any other purpose, including without limitation, unauthorized commercial uses, in vitro diagnostic uses, ex vivo or in vivo therapeutic uses, or any type of consumption by or application to human or animals.