

Acrolein Monoclonal Antibody (10A10)

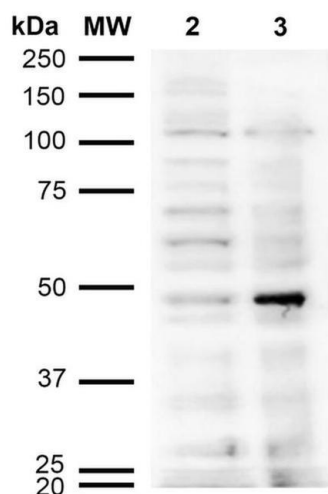
Product Details	
Size	100 µg
Species Reactivity	Chemical
Published Species	Chemical
Host/Isotype	Mouse / IgG1
Class	Monoclonal
Type	Antibody
Clone	10A10
Conjugate	Unconjugated
Immunogen	Synthetic Acrolein modified Keyhole Limpet Hemocyanin (KLH)
Form	Liquid
Concentration	1 mg/mL
Purification	Protein G
Storage buffer	PBS, pH 7.4, with 50% glycerol
Contains	0.09% sodium azide
Storage conditions	-20°C
RRID	AB_2735099

Applications	Tested Dilution	Publications
Western Blot (WB)	1:1,000	-
Immunocytochemistry (ICC/IF)	1:50	1 Publication
Flow Cytometry (Flow)	1:50	-
ELISA (ELISA)	1:1,000	-

Product Specific Information

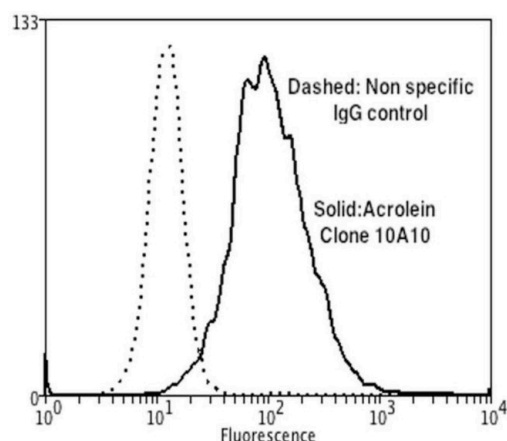
A 1:1,000 dilution of MA5-27553 was sufficient for detection of Acrolein in 2 µg of Acrolein conjugated to BSA by ECL immunoblot analysis using Goat Anti-Mouse IgG:HRP as the secondary Antibody. Specific for Acrolein modified proteins. Does not detect free acrolein. Does not cross-react with Crotonaldehyde, Hexanoyl Lysine, 4-Hydroxy-2-hexenal, 4-Hydroxy nonenal, Malondialdehyde, or Methylglyoxal modified proteins.

Product Images For Acrolein Monoclonal Antibody (10A10)



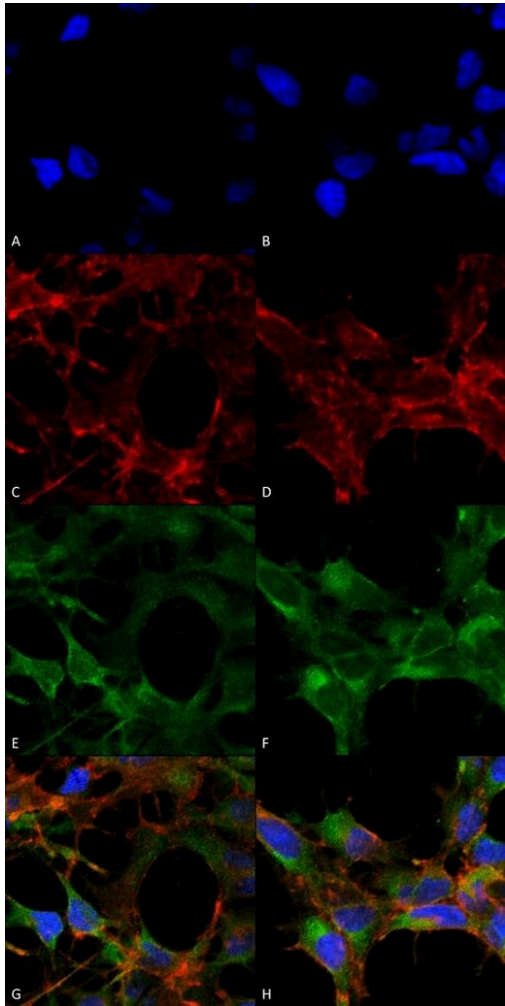
Acrolein Antibody (MA5-27553) in WB

Western blot analysis of Acrolein in human cervical cancer cell line (HeLa) with 12 µg of sample. The sample was incubated with Acrolein monoclonal antibody (Product # MA5-27553) using a dilution of 1:1000 (2 hours at 4°C), followed by Goat Anti-Mouse HRP (1 hour at RT) at a dilution of 1:2000 and ECL development (5 min at RT). Samples were arranged as follows: Lane 1: Molecular Weight Ladder (MW), Lane 2: HeLa cell lysate. Lane 3: H₂O₂ treated HeLa cell lysate.



Acrolein Antibody (MA5-27553) in Flow

Flow cytometry analysis of Acrolein in human neuroblastoma cells (SH-SY5Y). Sample was fixed using 90% methanol, incubated with Acrolein monoclonal antibody (Product # MA5-27553) using a dilution of 1:50 (30 min on ice), and followed by Goat Anti-Mouse PE (20 min at RT) at a dilution of 1:100. Cells were stressed using 250 µM H₂O₂ for 24 hours.



Acrolein Antibody (MA5-27553) in ICC/IF

Immunofluorescent analysis of Acrolein in human embryonic kidney cells (HEK293). Sample was fixed with 5% formaldehyde (5 min), incubated with Acrolein monoclonal antibody (Product # MA5-27553) using a dilution of 1:50 (30-60 min at RT), and followed by Goat Anti-Mouse Alexa Fluor 488, Phalloidin Alexa Fluor 633 and DAPI secondary antibody at a dilution of 1:1500, 1:250 and 1:50,000 (30-60 min at RT). Images are shown as follows: (A,C,E,G) - Untreated, (B,D,F,H) - Cells cultured overnight with 50 μ M H₂O₂, (A,B) DAPI (blue) nuclear stain, (C,D) Phalloidin Alex Fluor 633 F-Actin stain, (E,F) Acrolein Antibody, (G, H) Merged image. Magnification: 20x.

View more figures on thermofisher.com

1 Reference

Immunocytochemistry (1)

<div>Theranostics</div> <div>Aldehyde dehydrogenase inhibitors promote DNA damage in ovarian cancer and synergize with ATM/ATR inhibitors.</div> <div>"MA5-27553 was used in Immunocytochemistry-immunofluorescence to suggest a novel therapeutic approach to target HR proficient ovarian cancer cells."</div> <div>Authors: Grimley E,Cole AJ,Luong TT,McGonigal SC,Sinno S,Yang D,Bernstein KA,Buckanovich RJ</div>	<div>Year</div> <div>2021</div> <div>Species</div> <div>Chemical</div> <div>Dilution</div> <div>1:50</div>
---	--

For Research Use Only. Not for use in diagnostic procedures. Not for resale without express authorization. Products are warranted to operate or perform substantially in conformance with published Product specifications in effect at the time of sale, as set forth in the Production documentation, specifications and/or accompanying package inserts ("Documentation"). No claim of suitability for use in applications regulated by FDA is made. The warranty provided herein is valid only when used by properly trained individuals. Unless otherwise stated in the Documentation, this warranty is limited to one year from date of shipment when the Product is subjected to normal, proper and intended usage. This warranty does not extend to anyone other than the Buyer. Any model or sample furnished to Buyer is merely illustrative of the general type and quality of goods and does not represent that any Product will conform to such model or sample. NO OTHER WARRANTIES, EXPRESS OR IMPLIED, ARE GRANTED INCLUDING WITHOUT LIMITATION, IMPLIED WARRANTIES OF MERCHANTABILITY, FITNESS FOR ANY PARTICULAR PURPOSE, OR NON INFRINGEMENT. BUYER'S EXCLUSIVE REMEDY FOR NON-CONFORMING PRODUCTS DURING THE WARRANTY PERIOD IS LIMITED TO REPAIR, REPLACEMENT OF OR REFUND FOR THE NON-CONFORMING PRODUCT(S) AT SELLER'S SOLE OPTION. THERE IS NO OBLIGATION TO REPAIR, REPLACE OR REFUND FOR PRODUCTS AS THE RESULT OF (I) ACCIDENT, DISASTER OR EVENT OF FORCE MAJEURE, (II) MISUSE, FAULT OR NEGLIGENCE OF OR BY BUYER, (III) USE OF THE PRODUCTS IN A MANNER FOR WHICH THEY WERE NOT DESIGNED, OR (IV) IMPROPER STORAGE AND HANDLING OF THE PRODUCTS. Unless otherwise expressly stated on the Product or in the documentation accompanying the Product, the Product is intended for research only and is not to be used for any other purpose, including without limitation, unauthorized commercial uses, in vitro diagnostic uses, ex vivo or in vivo therapeutic uses, or any type of consumption by or application to human or animals.