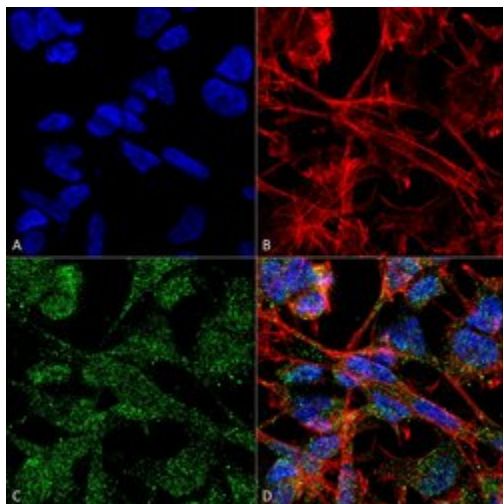


KCC2 Monoclonal Antibody (S1-12)

Product Details	
Size	100 µg
Species Reactivity	Human, Mouse, Rat
Published Species	Mouse
Host/Isotype	Mouse / IgG2a
Class	Monoclonal
Type	Antibody
Clone	S1-12
Conjugate	Unconjugated
Immunogen	Fusion protein amino acids 932-1043 corresponding to rat KCC2
Form	Liquid
Concentration	1 mg/mL
Purification	Protein G
Storage buffer	PBS, pH 7.4, with 50% glycerol
Contains	0.09% sodium azide
Storage conditions	-20°C
RRID	AB_2735237

Applications	Tested Dilution	Publications
Western Blot (WB)	1:1,000	-
Immunohistochemistry (IHC)	-	1 Publication
Immunohistochemistry (PFA fixed) (IHC (PFA))	1:300	-
Immunocytochemistry (ICC/IF)	1:100	-
Immunoprecipitation (IP)	Assay-Dependent	-

Product Images For KCC2 Monoclonal Antibody (S1-12)

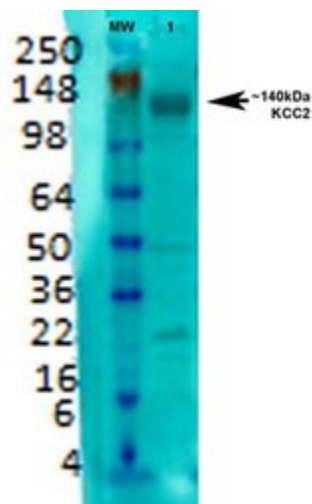
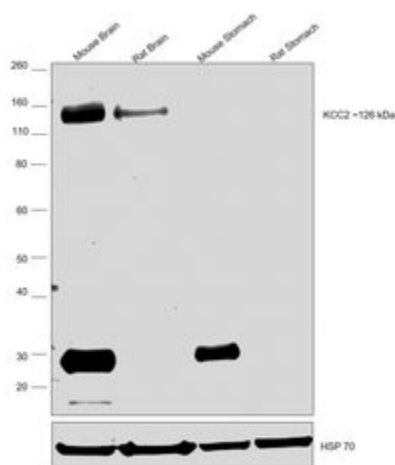


KCC2 Antibody (MA5-27610) in ICC/IF

Immunofluorescent analysis of KCC2 in human neuroblastoma cell line (SK-N-BE). Sample was fixed with 4% formaldehyde (15 min at RT), incubated with KCC2 monoclonal antibody (Product # MA5-27610) using a dilution of 1:100 (1 hour at RT), and followed by Goat Anti-Mouse 488, Phalloidin Texas Red and DAPI secondary antibody at a dilution of 1:200, 1:1000 (60 min at RT) and 1:5000 (5 min at RT). Images are shown as follows: (A) DAPI (blue) nuclear stain, B) Phalloidin Texas Red F-Actin stain, C) KCC2 Antibody, D) Merged image. Magnification: 60x.

KCC2 Antibody (MA5-27610) in WB

Western blot was performed using Anti-KCC2 Polyclonal Antibody (Product # MA5-27610) and ~126 kDa band corresponding to KCC2 was observed in Mouse Brain and Rat Brain, but not in Mouse Stomach and Rat Stomach as reported. Tissue lysate (40ug lysate) of Mouse Brain (Lane 1), Rat Brain (Lane 2), Mouse Stomach (Lane 3), and Rat Stomach (Lane 4) were electrophoresed using Novex® NuPAGE® 4-12 % Bis-Tris gel (Product # NP0322BOX). Resolved proteins were then transferred onto a nitrocellulose membrane (Product # IB23001) by iBlot® 2 Dry Blotting System (Product # IB21001). The blot was probed with the primary antibody (1:1000 dilution) and detected by chemiluminescence with Goat anti-Mouse IgG (H+L) Superclonal™ Recombinant Secondary Antibody, HRP (Product # A28177, 1:4000 dilution) using the iBright FL 1000 (Product # A32752). Chemiluminescent detection was performed using Novex® ECL Chemiluminescent Substrate Reagent Kit (Product # WP20005).



KCC2 Antibody (MA5-27610) in WB

Western blot analysis of KCC2 in rat brain membrane lysate. The sample was incubated with KCC2 monoclonal antibody (Product # MA5-27610) using a dilution of 1:1000.

Immunohistochemistry (1)

EMBO reports

TMEM16A expression in cholinergic neurons of the medial habenula mediates anxiety-related behaviors.

"MA5-27610 was used in Immunohistochemistry to study the specific expression of TMEM16A in the medial habenula using RNAscope in situ hybridization, immunohistochemistry, and electrophysiology."

Authors: Cho CH, Lee S, Kim A, Yarishkin O, Ryoo K, Lee YS, Jung HG, Yang E, Lee DY, Lee B, Kim H, Oh U, Im HI, Hwang EM, Park JY

Species
Mouse

Dilution
Not Cited

Year
2020

For Research Use Only. Not for use in diagnostic procedures. Not for resale without express authorization. Products are warranted to operate or perform substantially in conformance with published Product specifications in effect at the time of sale, as set forth in the Production documentation, specifications and/or accompanying package inserts ("Documentation"). No claim of suitability for use in applications regulated by FDA is made. The warranty provided herein is valid only when used by properly trained individuals. Unless otherwise stated in the Documentation, this warranty is limited to one year from date of shipment when the Product is subjected to normal, proper and intended usage. This warranty does not extend to anyone other than the Buyer. Any model or sample furnished to Buyer is merely illustrative of the general type and quality of goods and does not represent that any Product will conform to such model or sample. NO OTHER WARRANTIES, EXPRESS OR IMPLIED, ARE GRANTED INCLUDING WITHOUT LIMITATION, IMPLIED WARRANTIES OF MERCHANTABILITY, FITNESS FOR ANY PARTICULAR PURPOSE, OR NON INFRINGEMENT. BUYER'S EXCLUSIVE REMEDY FOR NON-CONFORMING PRODUCTS DURING THE WARRANTY PERIOD IS LIMITED TO REPAIR, REPLACEMENT OF OR REFUND FOR THE NON-CONFORMING PRODUCT(S) AT SELLER'S SOLE OPTION. THERE IS NO OBLIGATION TO REPAIR, REPLACE OR REFUND FOR PRODUCTS AS THE RESULT OF (I) ACCIDENT, DISASTER OR EVENT OF FORCE MAJEURE, (II) MISUSE, FAULT OR NEGLIGENCE OF OR BY BUYER, (III) USE OF THE PRODUCTS IN A MANNER FOR WHICH THEY WERE NOT DESIGNED, OR (IV) IMPROPER STORAGE AND HANDLING OF THE PRODUCTS. Unless otherwise expressly stated on the Product or in the documentation accompanying the Product, the Product is intended for research only and is not to be used for any other purpose, including without limitation, unauthorized commercial uses, in vitro diagnostic uses, ex vivo or in vivo therapeutic uses, or any type of consumption by or application to human or animals.