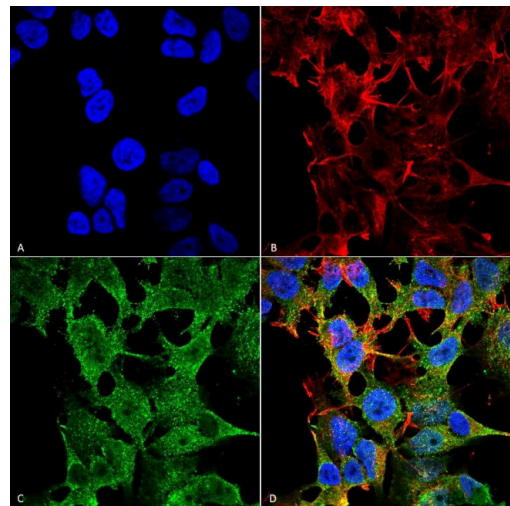


SCN2B Monoclonal Antibody (S395-68)

Product Details	
Size	100 µg
Species Reactivity	Human, Mouse, Rat
Host/Isotype	Mouse / IgG2B
Class	Monoclonal
Type	Antibody
Clone	S395-68
Conjugate	Unconjugated
Immunogen	Fusion protein amino acids 1-215 (full-length) of mouse Nav beta2
Form	Liquid
Concentration	1 mg/mL
Storage conditions	-20°C
RRID	AB_2735354

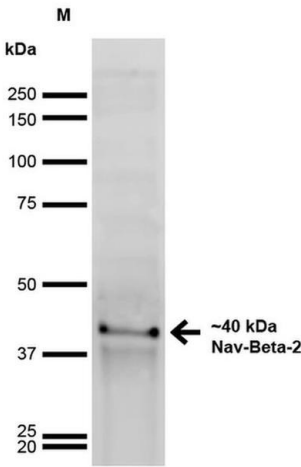
Applications	Tested Dilution	Publications
Western Blot (WB)	1:1,000	-
Immunohistochemistry (PFA fixed) (IHC (PFA))	1:100	-
Immunocytochemistry (ICC/IF)	Assay-Dependent	-

Product Images For SCN2B Monoclonal Antibody (S395-68)



SCN2B Antibody (MA5-27665) in ICC/IF

Immunofluorescent analysis of SCN2B in human neuroblastoma cell line (SK-N-BE). Sample was fixed with 4% formaldehyde (15 min at RT), incubated with SCN2B monoclonal antibody (Product # MA5-27665) using a dilution of 1:100 (1 hour at RT), and followed by Goat Anti-Mouse 488, Phalloidin Texas Red and DAPI secondary antibody at a dilution of 1:100, 1:1000 (60 min at RT) and 1:5000 (5 min at RT). Images are shown as follows: (A) DAPI (blue) nuclear stain, (B) Phalloidin Texas Red F-Actin stain, (C) Nav beta 2 Antibody, (D) Merged image. Magnification: 60x.



SCN2B Antibody (MA5-27665) in WB

Western blot analysis of SCN2B in rat brain with 20 µg of sample. The sample was incubated with SCN2B monoclonal antibody (Product # MA5-27665) using a dilution of 1:1000 (16 hours at 4°C), followed by Goat Anti-Mouse HRP (1 hour at RT) at a dilution of 1:200 and ECL development (6 min at RT). Samples were arranged as follows: Lane 1: MW Ladder, Lane 2: Rat Brain.

For Research Use Only. Not for use in diagnostic procedures. Not for resale without express authorization. Products are warranted to operate or perform substantially in conformance with published Product specifications in effect at the time of sale, as set forth in the Production documentation, specifications and/or accompanying package inserts ("Documentation"). No claim of suitability for use in applications regulated by FDA is made. The warranty provided herein is valid only when used by properly trained individuals. Unless otherwise stated in the Documentation, this warranty is limited to one year from date of shipment when the Product is subjected to normal, proper and intended usage. This warranty does not extend to anyone other than the Buyer. Any model or sample furnished to Buyer is merely illustrative of the general type and quality of goods and does not represent that any Product will conform to such model or sample. NO OTHER WARRANTIES, EXPRESS OR IMPLIED, ARE GRANTED INCLUDING WITHOUT LIMITATION, IMPLIED WARRANTIES OF MERCHANTABILITY, FITNESS FOR ANY PARTICULAR PURPOSE, OR NON INFRINGEMENT. BUYER'S EXCLUSIVE REMEDY FOR NON-CONFORMING PRODUCTS DURING THE WARRANTY PERIOD IS LIMITED TO REPAIR, REPLACEMENT OF OR REFUND FOR THE NON-CONFORMING PRODUCT(S) AT SELLER'S SOLE OPTION. THERE IS NO OBLIGATION TO REPAIR, REPLACE OR REFUND FOR PRODUCTS AS THE RESULT OF (I) ACCIDENT, DISASTER OR EVENT OF FORCE MAJEURE, (II) MISUSE, FAULT OR NEGLIGENCE OF OR BY BUYER, (III) USE OF THE PRODUCTS IN A MANNER FOR WHICH THEY WERE NOT DESIGNED, OR (IV) IMPROPER STORAGE AND HANDLING OF THE PRODUCTS. Unless otherwise expressly stated on the Product or in the documentation accompanying the Product, the Product is intended for research only and is not to be used for any other purpose, including without limitation, unauthorized commercial uses, in vitro diagnostic uses, ex vivo or in vivo therapeutic uses, or any type of consumption by or application to human or animals.