

# HSF1 Monoclonal Antibody (10H8)

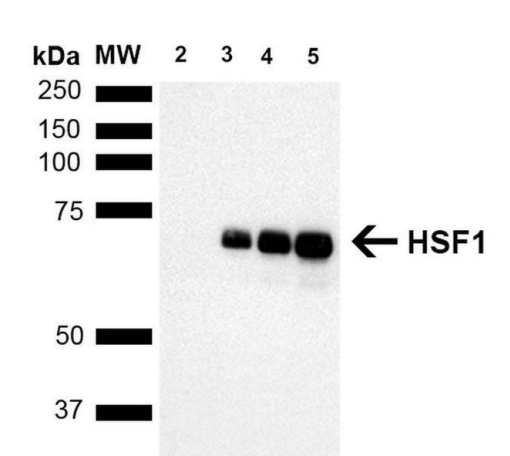
Product Details	
Size	100 µg
Species Reactivity	Bovine, Guinea pig, Hamster, Human, Mouse, Rabbit, Rhesus monkey, Rat
Published Species	Human
Host/Isotype	Rat / IgG1
Class	Monoclonal
Type	Antibody
Clone	10H8
Conjugate	Unconjugated
Immunogen	Purified recombinant mouse HSF1 protein, with epitope mapping to amino acids 378-395
Form	Liquid
Concentration	1 mg/mL
Purification	Protein G
Storage buffer	PBS, pH 7.4, with 50% glycerol
Contains	0.09% sodium azide
Storage conditions	-20°C
RRID	AB_2735220

Applications	Tested Dilution	Publications
Western Blot (WB)	1:1,000	-
Immunohistochemistry (IHC)	-	1 Publication
Immunohistochemistry (PFA fixed) (IHC (PFA))	1:1,000	-
Immunocytochemistry (ICC/IF)	1:200	-
ELISA (ELISA)	Assay-Dependent	-
Immunoprecipitation (IP)	Assay-Dependent	-
Gel Shift (GS)	Assay-dependent	-

## Product Specific Information

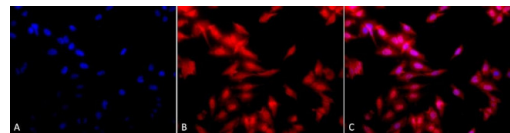
1 µg/mL of MA5-27688 was sufficient for detection of HSF1 in 20 µg of heat shocked HeLa cell lysate by ECL immunoblot analysis using Goat anti-rat IgG: HRP as the secondary antibody|Detects approximately 85kDa (unstressed cell lysates), and approximately 95kDa (heat shocked cell lysates).

Product Images For HSF1 Monoclonal Antibody (10H8)



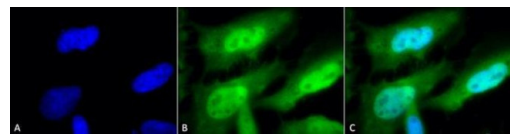
HSF1 Antibody (MA5-27688) in WB

Western blot analysis of HSF1 in human Breast adenocarcinoma cell line (MCF7). The sample was blocked with 1.5% BSA, incubated with HSF1 monoclonal antibody (Product # MA5-27688) using a dilution of 1:1000 (2 hours at 4°C), and followed by Goat Anti-Rat HRP (1 hour at RT) at a dilution of 1:2000. Samples were arranged as follows: Lane 1: MW Ladder, Lane 2: HSF1 null lysate prepared from mouse embryonic fibroblasts, Lane 3: MCF7 lysate (5 µg), Lane 4: MCF7 lysate (10 µg), Lane 5: MCF7 lysate (20 µg).



HSF1 Antibody (MA5-27688) in ICC/IF

Immunofluorescent analysis of HSF1 in human heat shocked HeLa cells. Sample was fixed using 2% formaldehyde (20 min at RT), incubated with HSF1 monoclonal antibody (Product # MA5-27688) using a dilution of 1:100 (12 hours at 4°C), and followed by APC Goat Anti-Rat (red) at 1:200 for 2 hours at RT. Counterstain: DAPI (blue) nuclear stain at 1:40,000 for 2 hours at RT. Localization: Diffuse nuclear and cytoplasmic staining. Magnification: 20x. Images are as follows: (A) DAPI (blue) nuclear stain. (B) Anti-HSF1 Antibody. (C) Composite. Heat Shocked at 42°C for 1h.



HSF1 Antibody (MA5-27688) in ICC/IF

Immunofluorescent analysis of HSF1 in human heat shocked mitotic HeLa cells. Sample was fixed with 2% formaldehyde (20 min at RT), incubated with HSF1 monoclonal antibody (Product # MA5-27688) using a dilution of 1:100, and followed by FITC Goat Anti-Rat (green) and DAPI secondary antibody at a dilution of 1:200 and 1:40,000. Images are shown as follows: (A) DAPI (blue) nuclear stain, (B) Anti-HSF1 Antibody, (C) Merged image. Magnification: 100x.

View more figures on thermofisher.com

1 Reference

Immunohistochemistry (1)

Nature communications		Year
HSF1 is a driver of leukemia stem cell self-renewal in acute myeloid leukemia.		2022
"MA5-27688 was used in Immunohistochemistry to provide a rationale for developing efficacious small molecules to specifically target HSF1 in AML."		Species
Authors: Dong Q,Xiu Y,Wang Y,Hodgson C,Borcherding N,Jordan C,Buchanan J,Taylor E,Wagner B,Leidinger M, Holman C,Thiele DJ,O'Brien S,Xue HH,Zhao J,Li Q,Meyerson H,Boyce BF,Zhao C		Human
		Dilution
		1:1000

For Research Use Only. Not for use in diagnostic procedures. Not for resale without express authorization. Products are warranted to operate or perform substantially in conformance with published Product specifications in effect at the time of sale, as set forth in the Production documentation, specifications and/or accompanying package inserts ("Documentation"). No claim of suitability for use in applications regulated by FDA is made. The warranty provided herein is valid only when used by properly trained individuals. Unless otherwise stated in the Documentation, this warranty is limited to one year from date of shipment when the Product is subjected to normal, proper and intended usage. This warranty does not extend to anyone other than the Buyer. Any model or sample furnished to Buyer is merely illustrative of the general type and quality of goods and does not represent that any Product will conform to such model or sample. NO OTHER WARRANTIES, EXPRESS OR IMPLIED, ARE GRANTED INCLUDING WITHOUT LIMITATION, IMPLIED WARRANTIES OF MERCHANTABILITY, FITNESS FOR ANY PARTICULAR PURPOSE, OR NON INFRINGEMENT. BUYER'S EXCLUSIVE REMEDY FOR NON-CONFORMING PRODUCTS DURING THE WARRANTY PERIOD IS LIMITED TO REPAIR, REPLACEMENT OF OR REFUND FOR THE NON-CONFORMING PRODUCT(S) AT SELLER'S SOLE OPTION. THERE IS NO OBLIGATION TO REPAIR, REPLACE OR REFUND FOR PRODUCTS AS THE RESULT OF (I) ACCIDENT, DISASTER OR EVENT OF FORCE MAJEURE, (II) MISUSE, FAULT OR NEGLIGENCE OF OR BY BUYER, (III) USE OF THE PRODUCTS IN A MANNER FOR WHICH THEY WERE NOT DESIGNED, OR (IV) IMPROPER STORAGE AND HANDLING OF THE PRODUCTS. Unless otherwise expressly stated on the Product or in the documentation accompanying the Product, the Product is intended for research only and is not to be used for any other purpose, including without limitation, unauthorized commercial uses, in vitro diagnostic uses, ex vivo or in vivo therapeutic uses, or any type of consumption by or application to human or animals.