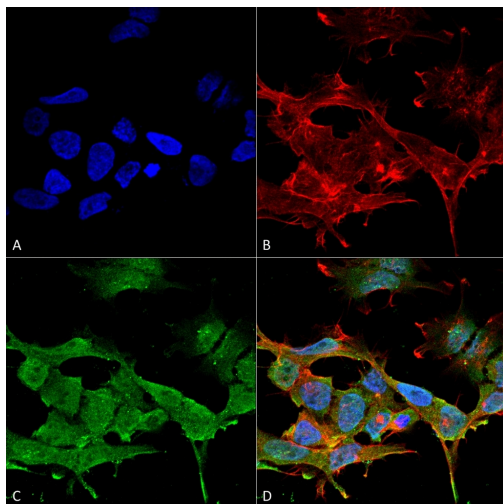


# CLCN3 Monoclonal Antibody (S258-5)

Product Details	
Size	100 µg
Species Reactivity	Human, Mouse, Rat
Host/Isotope	Mouse / IgG1
Class	Monoclonal
Type	Antibody
Clone	S258-5
Conjugate	Unconjugated
Immunogen	Synthetic peptide amino acids 98-115 (cytoplasmic N-terminus) of rat Clcn3
Form	Liquid
Concentration	1 mg/ml
Purification	Protein G
Storage buffer	PBS, pH 7.4, with 50% glycerol
Contains	0.09% sodium azide
Storage Conditions	-20°C
RRID	AB_2735150

Applications	Tested	Dilution	Published
Immunocytochemistry (ICC)	✓	1:100	
Immunofluorescence (IF)	✓	Assay-Dependent	
Immunohistochemistry (PFA fixed) (IHC (PFA))	✓	1:1000	
Western Blot (WB)	✓	1:1000	

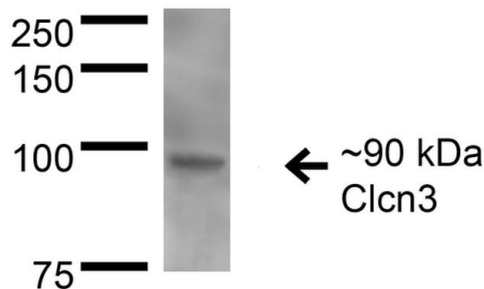
## Product Images For CLCN3 Monoclonal Antibody (S258-5)



### CLCN3 Antibody (MA5-27709) in IF

Immunofluorescent analysis of CLCN3 in human neuroblastoma cell line (SK-N-BE). Sample was fixed with 4% formaldehyde (15 min at RT), incubated with CLCN3 monoclonal antibody (Product # MA5-27709) using a dilution of 1:100 (1 hour at RT), and followed by Goat Anti-Mouse 488, Phalloidin Texas Red and DAPI secondary antibody at a dilution of 1:100, 1:1000 (60 min at RT) and 1:5000 (5 min at RT). Images are shown as follows: (A) DAPI (blue) nuclear stain, B) Phalloidin Texas Red F-Actin stain, C) Clcn3 Antibody, D) Merged image. Magnification: 60x.

kDa MW



### CLCN3 Antibody (MA5-27709) in WB

Western blot analysis of CLCN3 in rat brain membrane with 15 µg of sample. The sample was blocked with 2% BSA and 2% skim milk in TBST, incubated with CLCN3 monoclonal antibody (Product # MA5-27709) using a dilution of 1:200 (16 hours at RT), followed by Goat Anti-Mouse HRP (1 hour at RT) at a dilution of 1:1000 and ECL development (6 min at RT). Samples were arranged as follows: Lane 1: Molecular Weight Ladder, Lane 2: Rat Brain membrane.

For Research Use Only. Not for use in diagnostic procedures. Not for resale without express authorization. Products are warranted to operate or perform substantially in conformance with published Product specifications in effect at the time of sale, as set forth in the Production documentation, specifications and/or accompanying package inserts ("Documentation"). No claim of suitability for use in applications regulated by FDA is made. The warranty provided herein is valid only when used by properly trained individuals. Unless otherwise stated in the Documentation, this warranty is limited to one year from date of shipment when the Product is subjected to normal, proper and intended usage. This warranty does not extend to anyone other than the Buyer. Any model or sample furnished to Buyer is merely illustrative of the general type and quality of goods and does not represent that any Product will conform to such model or sample. NO OTHER WARRANTIES, EXPRESS OR IMPLIED, ARE GRANTED INCLUDING WITHOUT LIMITATION, IMPLIED WARRANTIES OF MERCHANTABILITY, FITNESS FOR ANY PARTICULAR PURPOSE, OR NON-INFRINGEMENT. BUYER'S EXCLUSIVE REMEDY FOR NON-CONFORMING PRODUCTS DURING THE WARRANTY PERIOD IS LIMITED TO REPAIR, REPLACEMENT OF OR REFUND FOR THE NON-CONFORMING PRODUCT(S) AT SELLER'S SOLE OPTION. THERE IS NO OBLIGATION TO REPAIR, REPLACE OR REFUND FOR PRODUCTS AS THE RESULT OF (I) ACCIDENT, DISASTER OR EVENT OF FORCE MAJEURE, (II) MISUSE, FAULT OR NEGLIGENCE OF OR BY BUYER, (III) USE OF THE PRODUCTS IN A MANNER FOR WHICH THEY WERE NOT DESIGNED, OR (IV) IMPROPER STORAGE AND HANDLING OF THE PRODUCTS. Unless otherwise expressly stated on the Product or in the documentation accompanying the Product, the Product is intended for research only and is not to be used for any other purpose, including without limitation, unauthorized commercial uses, in vitro diagnostic uses, ex vivo or in vivo therapeutic uses, or any type of consumption by or application to human or animals.