

MSH6 Recombinant Rabbit Monoclonal Antibody (SP08-02)

Product Details	
Size	100 µL
Species Reactivity	Human, Mouse, Rat
Published Species	Human
Host/Isotype	Rabbit / IgG
Expression system	HEK293 cells
Class	Recombinant Monoclonal
Type	Antibody
Clone	SP08-02
Conjugate	Unconjugated
Immunogen	Synthetic peptide within Human MSH6 aa 1-50
Form	Liquid
Concentration	9 mg/mL
Purification	Protein A
Storage buffer	TBS, pH 7.4, with 40% Glycerol, 0.05% BSA
Contains	0.05% sodium azide
Storage conditions	Store at 4°C short term. For long term storage, store at -20°C, avoiding freeze/thaw cycles.
RRID	AB_2809334

Applications	Tested Dilution	Publications
Western Blot (WB)	1:500-1:2,000	-
Immunohistochemistry (IHC)	-	1 Publication
Immunohistochemistry (Paraffin) (IHC (P))	1:50-1:200	-
Immunocytochemistry (ICC/IF)	1:50-1:100	-

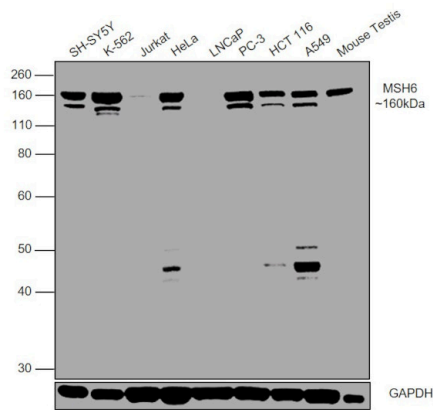
Product Specific Information

Recombinant rabbit monoclonal antibodies are produced using in vitro expression systems. The expression systems are developed by cloning in the specific antibody DNA sequences from immunoreactive rabbits. Then, individual clones are screened to select the best candidates for production. The advantages of using recombinant rabbit monoclonal antibodies include: better specificity and sensitivity, lot-to-lot consistency, animal origin-free formulations, and broader immunoreactivity to diverse targets due to larger rabbit immune repertoire.

Product Images For MSH6 Recombinant Rabbit Monoclonal Antibody (SP08-02)

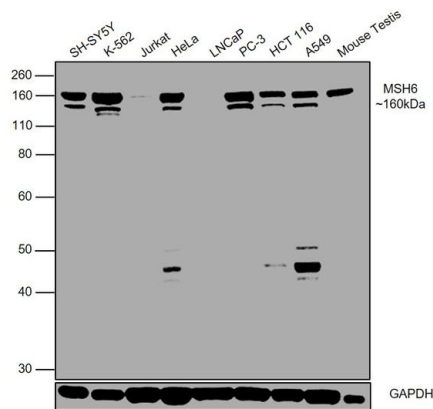
MSH6 Antibody (MA5-32040)

Antibody specificity was demonstrated by detection of differential basal expression of the target across cell lines owing to their inherent genetic constitution. Relative expression of MSH6 was observed in all cell lines and tissue lysates in comparison to Jurkat and LNCaP using MSH6 Recombinant Rabbit Monoclonal Antibody (SP08-02) (Product # MA5-32040) in western blot. {RE}



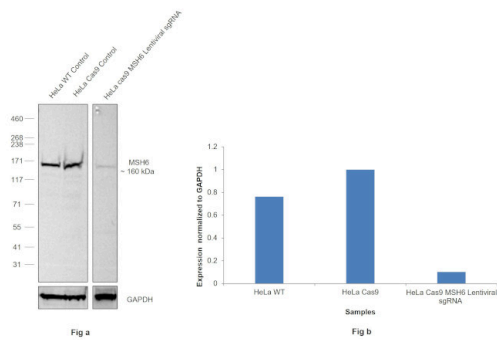
MSH6 Antibody (MA5-32040) in WB

Western blot was performed using Anti-MSH6 Recombinant Rabbit Monoclonal Antibody (SP08-02) (Product # MA5-32040) and a 160 kDa band corresponding to MSH6 was observed in all the tested cell models and tissue lysates, except Jurkat and LNCaP which are reported to be negative. This target undergoes heavy phosphorylation and multiple bands between 120-160 kDa can be expected. Modified whole cell lysate (1% SDS) (30 µg lysate) of SH-SY5Y (Lane 1), K-562 (Lane 2), Jurkat (Lane 3), HeLa (Lane 4), LNCaP (Lane 5), PC-3 (Lane 6), HCT 116 (Lane 7), A549 (Lane 8) and tissue extract (30 µg lysate) of Mouse Testis (Lane 9) were electrophoresed using NuPAGE® 10 % Bis-Tris gel (Product # NP0302BOX). Resolved proteins were then transferred onto a nitrocellulose membrane (Product # IB23001) by iBlot® 2 Dry Blotting System (Product # IB21001). The blot was probed with the primary antibody (1:1,000 dilution) and detected by chemiluminescence with Goat anti-Rabbit IgG (Heavy Chain), Superclonal™ Recombinant Secondary Antibody, HRP (Product # A27036, 1:4,000 dilution) using the iBright FL 1000 (Product # A32752). Chemiluminescent detection was performed using Novex® ECL Chemiluminescent Substrate Reagent Kit (Product # WP20005).



MSH6 Antibody (MA5-32040)

Antibody specificity was demonstrated by CRISPR-Cas9 mediated knockout of target protein. A reduced signal was observed for target protein in HeLa Cas9 cell line transduced with MSH6 Lentiviral sgRNA compared to control cell line using MSH6 Recombinant Rabbit Monoclonal Antibody (SP08-02) (Product # MA5-32040). {KO}



View more figures on thermofisher.com

Immunohistochemistry (1)

Nature communications	Year 2021
Focal amplifications are associated with chromothripsis events and diverse prognoses in gastric cardia adenocarcinoma.	Species Human
"MA5-32040 was used in Immunohistochemistry to identify frequent focal amplifications and ecDNAs in Chinese GCA patient samples, and find focal amplifications in the GCA cohort are associated with the chromothripsis process and may be induced by accumulated DNA damage due to local dietary habits."	Dilution 1:100
Authors: Zhao XK,Xing P,Song X,Zhao M,Zhao L,Dang Y,Lei LL,Xu RH,Han WL,Wang PP,Yang MM,Hu JF,Zhong K,Zhou FY,Han XN,Meng CL,Ji JJ,Chen X,Wang LD	

For Research Use Only. Not for use in diagnostic procedures. Not for resale without express authorization. Products are warranted to operate or perform substantially in conformance with published Product specifications in effect at the time of sale, as set forth in the Production documentation, specifications and/or accompanying package inserts ("Documentation"). No claim of suitability for use in applications regulated by FDA is made. The warranty provided herein is valid only when used by properly trained individuals. Unless otherwise stated in the Documentation, this warranty is limited to one year from date of shipment when the Product is subjected to normal, proper and intended usage. This warranty does not extend to anyone other than the Buyer. Any model or sample furnished to Buyer is merely illustrative of the general type and quality of goods and does not represent that any Product will conform to such model or sample. NO OTHER WARRANTIES, EXPRESS OR IMPLIED, ARE GRANTED INCLUDING WITHOUT LIMITATION, IMPLIED WARRANTIES OF MERCHANTABILITY, FITNESS FOR ANY PARTICULAR PURPOSE, OR NON INFRINGEMENT. BUYER'S EXCLUSIVE REMEDY FOR NON-CONFORMING PRODUCTS DURING THE WARRANTY PERIOD IS LIMITED TO REPAIR, REPLACEMENT OF OR REFUND FOR THE NON-CONFORMING PRODUCT(S) AT SELLER'S SOLE OPTION. THERE IS NO OBLIGATION TO REPAIR, REPLACE OR REFUND FOR PRODUCTS AS THE RESULT OF (I) ACCIDENT, DISASTER OR EVENT OF FORCE MAJEURE, (II) MISUSE, FAULT OR NEGLIGENCE OF OR BY BUYER, (III) USE OF THE PRODUCTS IN A MANNER FOR WHICH THEY WERE NOT DESIGNED, OR (IV) IMPROPER STORAGE AND HANDLING OF THE PRODUCTS. Unless otherwise expressly stated on the Product or in the documentation accompanying the Product, the Product is intended for research only and is not to be used for any other purpose, including without limitation, unauthorized commercial uses, in vitro diagnostic uses, ex vivo or in vivo therapeutic uses, or any type of consumption by or application to human or animals.