

NOTCH1 Recombinant Rabbit Monoclonal Antibody (SJ205)

Product Details	
Size	100 µL
Species Reactivity	Human, Mouse, Rat
Published Species	Human
Host/Isotype	Rabbit / IgG
Expression system	HEK293 cells
Class	Recombinant Monoclonal
Type	Antibody
Clone	SJ205
Conjugate	Unconjugated
Immunogen	Synthetic peptide within Human Notch 1 aa 2,481-2,530
Form	Liquid
Concentration	1 mg/mL
Purification	Protein A
Storage buffer	TBS, pH 7.4, with 40% Glycerol, 0.05% BSA
Contains	0.05% sodium azide
Storage conditions	Store at 4°C short term. For long term storage, store at -20°C, avoiding freeze/thaw cycles.
RRID	AB_2809374

Applications	Tested Dilution	Publications
Western Blot (WB)	1:1,000-1:2,000	-
Immunohistochemistry (IHC)	1:50-1:200	-
Immunocytochemistry (ICC/IF)	1:50-1:200	-
Flow Cytometry (Flow)	1:50-1:100	-
SDS-PAGE (SDS-PAGE)	-	1 Publication

Product Specific Information

Recombinant rabbit monoclonal antibodies are produced using in vitro expression systems. The expression systems are developed by cloning in the specific antibody DNA sequences from immunoreactive rabbits. Then, individual clones are screened to select the best candidates for production. The advantages of using recombinant rabbit monoclonal antibodies include: better specificity and sensitivity, lot-to-lot consistency, animal origin-free formulations, and broader immunoreactivity to diverse targets due to larger rabbit immune repertoire.

Product Images For NOTCH1 Recombinant Rabbit Monoclonal Antibody (SJ205)

NOTCH1 Antibody (MA5-32080) in WB

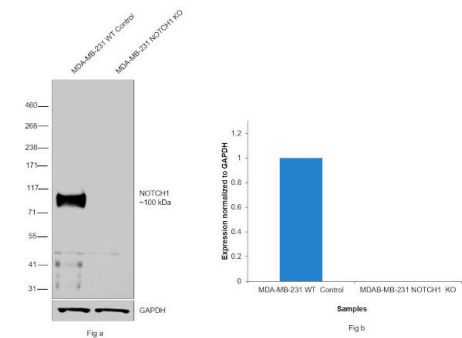
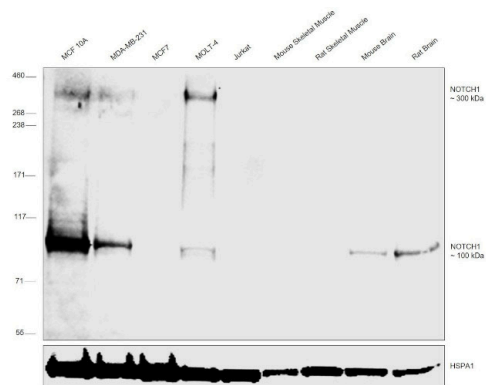
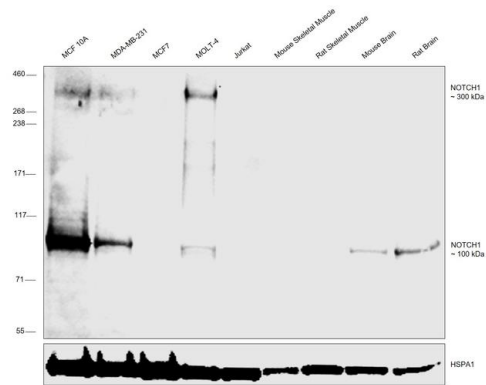
Western blot was performed using Anti-NOTCH1 Recombinant Rabbit Monoclonal Antibody (SJ205) (Product # MA5-32080). A 300 kDa and a 100 kDa band corresponding to NOTCH1 was observed across MCF 10A, MDA-MB-231, Molt-4, Mouse Brain and Rat Brain. Whole cell extracts (40 µg lysate) of MCF 10A (Lane 1), MDA-MB-231 (Lane 2), MCF7 (Lane 3), MOLT-4 (Lane 4), Jurkat (Lane 5), Mouse Skeletal Muscle (Lane 6), Rat Skeletal Muscle (Lane 7), Mouse Brain (Lane 8) and Rat Brain (Lane 9) were electrophoresed using NuPAGE™ 3-8% Tris-Acetate Protein Gel (Product # EA0378BOX). Resolved proteins were then transferred onto a Nitrocellulose membrane (Product # IB23001) by iBlot® 2 Dry Blotting System (Product # IB21001). The blot was probed with the primary antibody (1:1000 dilution) and detected by chemiluminescence with Goat anti-Rabbit IgG (Heavy Chain) Superclonal™ Recombinant Secondary Antibody, HRP (Product # A27036, 1:4000 dilution) using the iBright FL 1000 (Product # A32752). Chemiluminescent detection was performed using SuperSignal™ West Dura Extended Duration Substrate (Product # 34076).

NOTCH1 Antibody (MA5-32080)

Antibody specificity was demonstrated by detection of differential basal expression of the target across cell lines and tissues owing to their inherent genetic constitution. Relative expression of NOTCH1 was observed in MCF10A, MDA-MB-231 and MOLT-4 in comparison to MCF7 and Jurkat and in Mouse Brain and Rat Brain in comparison to Mouse Skeletal Muscle and Rat Skeletal Muscle using Anti-NOTCH1 Recombinant Rabbit Monoclonal Antibody (SJ205) (Product # MA5-32080) in Western Blot. {RE}

NOTCH1 Antibody (MA5-32080)

Antibody specificity was demonstrated by CRISPR-Cas9 mediated knockout of target protein. A loss of signal was observed for target protein in NOTCH1 KO cell line compared to control cell line using Anti-NOTCH1 Recombinant Rabbit Monoclonal Antibody (SJ205) (Product # MA5-32080). {KO}



View more figures on thermofisher.com

SDS-PAGE (1)

Frontiers in cardiovascular medicine

Vascular Injury in the Zebrafish Tail Modulates Blood Flow and Peak Wall Shear Stress to Restore Embryonic Circular Network.

"MA5-32080 was used in Sodium dodecyl sulfate polyacrylamide gel electrophoresis to study vascular regeneration in a zebrafish model by using tail amputation to disrupt the embryonic circulatory loop (ECL) at 3 days post fertilization (dpf)."

Authors: Baek KI,Chang SS,Chang CC,Roustaei M,Ding Y,Wang Y,Chen J,O'Donnell R,Chen H,Ashby JW,Xu X,Mack JJ,Cavallero S,Roper M,Hsiai TK

Year
2023

Species
Human

For Research Use Only. Not for use in diagnostic procedures. Not for resale without express authorization. Products are warranted to operate or perform substantially in conformance with published Product specifications in effect at the time of sale, as set forth in the Production documentation, specifications and/or accompanying package inserts ("Documentation"). No claim of suitability for use in applications regulated by FDA is made. The warranty provided herein is valid only when used by properly trained individuals. Unless otherwise stated in the Documentation, this warranty is limited to one year from date of shipment when the Product is subjected to normal, proper and intended usage. This warranty does not extend to anyone other than the Buyer. Any model or sample furnished to Buyer is merely illustrative of the general type and quality of goods and does not represent that any Product will conform to such model or sample. NO OTHER WARRANTIES, EXPRESS OR IMPLIED, ARE GRANTED INCLUDING WITHOUT LIMITATION, IMPLIED WARRANTIES OF MERCHANTABILITY, FITNESS FOR ANY PARTICULAR PURPOSE, OR NON INFRINGEMENT. BUYER'S EXCLUSIVE REMEDY FOR NON-CONFORMING PRODUCTS DURING THE WARRANTY PERIOD IS LIMITED TO REPAIR, REPLACEMENT OF OR REFUND FOR THE NON-CONFORMING PRODUCT(S) AT SELLER'S SOLE OPTION. THERE IS NO OBLIGATION TO REPAIR, REPLACE OR REFUND FOR PRODUCTS AS THE RESULT OF (i) ACCIDENT, DISASTER OR EVENT OF FORCE MAJEURE, (ii) MISUSE, FAULT OR NEGLIGENCE OF OR BY BUYER, (iii) USE OF THE PRODUCTS IN A MANNER FOR WHICH THEY WERE NOT DESIGNED, OR (iv) IMPROPER STORAGE AND HANDLING OF THE PRODUCTS. Unless otherwise expressly stated on the Product or in the documentation accompanying the Product, the Product is intended for research only and is not to be used for any other purpose, including without limitation, unauthorized commercial uses, in vitro diagnostic uses, ex vivo or in vivo therapeutic uses, or any type of consumption by or application to human or animals.