

# CLOCK Recombinant Rabbit Monoclonal Antibody (JA12-33)

Product Details	
Size	100 µL
Species Reactivity	Human, Mouse, Rat
Host/Isotype	Rabbit / IgG
Expression system	HEK293 cells
Class	Recombinant Monoclonal
Type	Antibody
Clone	JA12-33
Conjugate	Unconjugated
Immunogen	Synthetic peptide within Human CLOCK aa 140-189
Form	Liquid
Concentration	1 mg/mL
Purification	Protein A
Storage buffer	TBS, pH 7.4, with 0.05% BSA, 40% glycerol
Contains	0.05% sodium azide
Storage conditions	Store at 4°C short term. For long term storage, store at -20°C, avoiding freeze/thaw cycles.
RRID	AB_2809990

Applications	Tested Dilution	Publications
Western Blot (WB)	1:500-1:1,000	-
Immunohistochemistry (IHC)	1:50-1:200	-
Immunocytochemistry (ICC/IF)	1:50-1:200	-
Flow Cytometry (Flow)	1:50-1:100	-

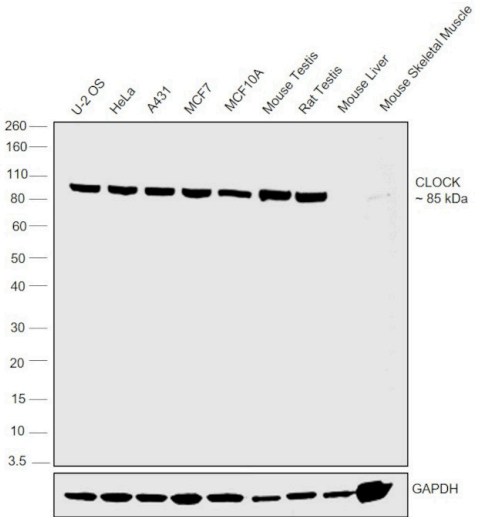
## Product Specific Information

Recombinant rabbit monoclonal antibodies are produced using in vitro expression systems. The expression systems are developed by cloning in the specific antibody DNA sequences from immunoreactive rabbits. Then, individual clones are screened to select the best candidates for production. The advantages of using recombinant rabbit monoclonal antibodies include: better specificity and sensitivity, lot-to-lot consistency, animal origin-free formulations, and broader immunoreactivity to diverse targets due to larger rabbit immune repertoire.

Product Images For CLOCK Recombinant Rabbit Monoclonal Antibody (JA12-33)

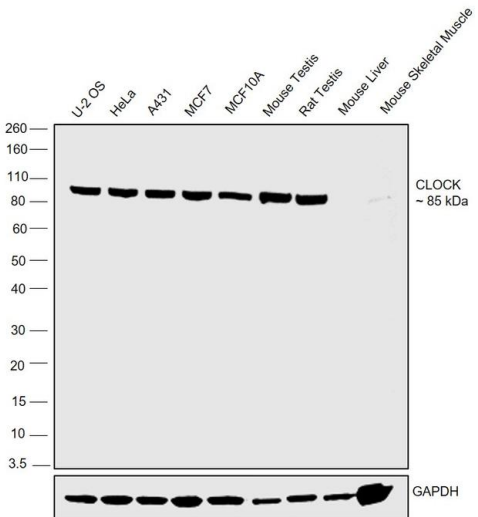
CLOCK Antibody (MA5-32713)

Antibody specificity was demonstrated by detection of differential basal expression of the target across U-2 OS (Lane 1), HeLa (Lane 2), A-431 (Lane 3), MCF7 (Lane 4), MCF 10A (Lane 5), Mouse Testis (Lane 6), Rat Testis (Lane 7), Mouse Liver (Lane 8), Mouse Skeletal Muscle (Lane 9) owing to their inherent genetic constitution. Relative expression of CLOCK was observed in Mouse and Rat Testis as compared to Liver and Skeletal Muscle using Anti-CLOCK Recombinant Rabbit Monoclonal Antibody (JA12-33) (Product # MA5-32713) in Western Blot. {RE}



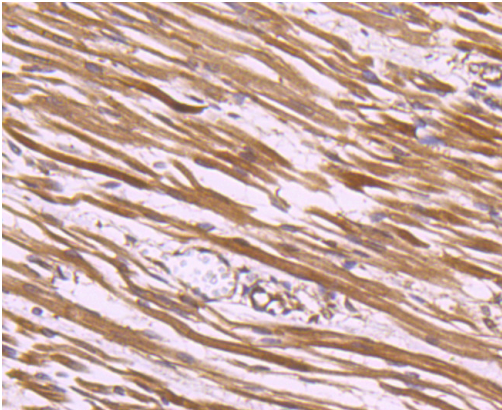
CLOCK Antibody (MA5-32713) in WB

Western blot was performed using Anti-CLOCK Recombinant Rabbit Monoclonal Antibody (JA12-33) (Product # MA5-32713) and a 95 kDa band corresponding to CLOCK was observed across cell lines and tissues tested. Whole cell extracts (30 µg lysate) of U-2 OS (Lane 1), HeLa (Lane 2), A-431 (Lane 3), MCF7 (Lane 4), MCF 10A (Lane 5) and tissue extracts (30 µg lysate) of Mouse Testis (Lane 6), Rat Testis (Lane 7), Mouse Liver (Lane 8), Mouse Skeletal Muscle (Lane 9) were electrophoresed using NuPAGE™ 4-12% Bis-Tris Protein Gel (Product # NP0322BOX). Resolved proteins were then transferred onto a nitrocellulose membrane (Product # IB23001) by iBlot® 2 Dry Blotting System (Product # IB21001). The blot was probed with the primary antibody (1:1000) and detected by chemiluminescence with Goat anti-Rabbit IgG (Heavy Chain) Superclonal™ Recombinant Secondary Antibody, HRP (Product # A27036,1:4000) using the iBright™ FL1500 Imaging System (Product # A44115). Chemiluminescent detection was performed using Novex® ECL Chemiluminescent Substrate Reagent Kit (Product # WP20005).



CLOCK Antibody (MA5-32713) in IHC (P)

Immunohistochemical analysis of CLOCK of paraffin-embedded Human fetal skeletal muscle tissue using a CLOCK Monoclonal antibody (Product #MA5-32713). Counter stained with hematoxylin.



View more figures on [thermofisher.com](https://thermofisher.com)

For Research Use Only. Not for use in diagnostic procedures. Not for resale without express authorization. Products are warranted to operate or perform substantially in conformance with published Product specifications in effect at the time of sale, as set forth in the Production documentation, specifications and/or accompanying package inserts ("Documentation"). No claim of suitability for use in applications regulated by FDA is made. The warranty provided herein is valid only when used by properly trained individuals. Unless otherwise stated in the Documentation, this warranty is limited to one year from date of shipment when the Product is subjected to normal, proper and intended usage. This warranty does not extend to anyone other than the Buyer. Any model or sample furnished to Buyer is merely illustrative of the general type and quality of goods and does not represent that any Product will conform to such model or sample. NO OTHER WARRANTIES, EXPRESS OR IMPLIED, ARE GRANTED INCLUDING WITHOUT LIMITATION, IMPLIED WARRANTIES OF MERCHANTABILITY, FITNESS FOR ANY PARTICULAR PURPOSE, OR NON INFRINGEMENT. BUYER'S EXCLUSIVE REMEDY FOR NON-CONFORMING PRODUCTS DURING THE WARRANTY PERIOD IS LIMITED TO REPAIR, REPLACEMENT OF OR REFUND FOR THE NON-CONFORMING PRODUCT(S) AT SELLER'S SOLE OPTION. THERE IS NO OBLIGATION TO REPAIR, REPLACE OR REFUND FOR PRODUCTS AS THE RESULT OF (I) ACCIDENT, DISASTER OR EVENT OF FORCE MAJEURE, (II) MISUSE, FAULT OR NEGLIGENCE OF OR BY BUYER, (III) USE OF THE PRODUCTS IN A MANNER FOR WHICH THEY WERE NOT DESIGNED, OR (IV) IMPROPER STORAGE AND HANDLING OF THE PRODUCTS. Unless otherwise expressly stated on the Product or in the documentation accompanying the Product, the Product is intended for research only and is not to be used for any other purpose, including without limitation, unauthorized commercial uses, in vitro diagnostic uses, ex vivo or in vivo therapeutic uses, or any type of consumption by or application to human or animals.