

CDK6 Recombinant Rabbit Monoclonal Antibody (8G3)

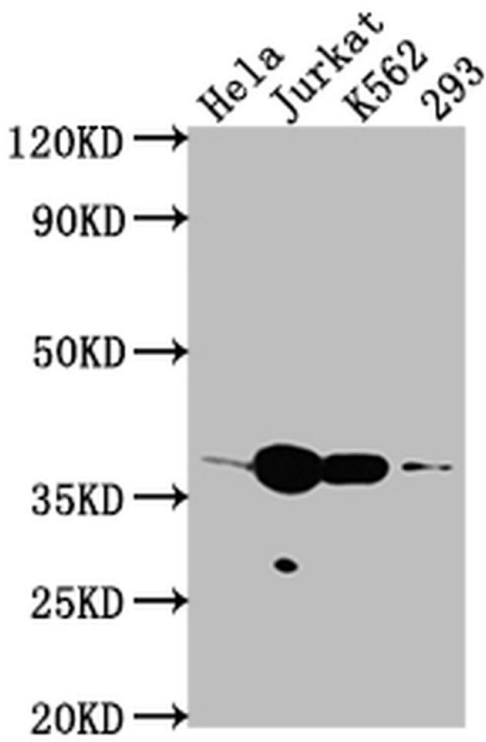
Product Details	
Size	100 µL
Species Reactivity	Human
Host/Isotype	Rabbit / IgG
Expression system	HEK293 cells
Class	Recombinant Monoclonal
Type	Antibody
Clone	8G3
Conjugate	Unconjugated
Immunogen	A synthesized peptide derived from human CDK6
Form	Liquid
Concentration	0.3 mg/mL
Purification	Affinity chromatography
Storage buffer	PBS, pH 7.4, with 50% glycerol, 150mM NaCl
Contains	0.02% sodium azide
Storage conditions	-20°C or -80°C if preferred
RRID	AB_2898274

Applications	Tested Dilution	Publications
Western Blot (WB)	1:500-1:5,000	-
Immunoprecipitation (IP)	1:200-1:1,000	-

Product Specific Information

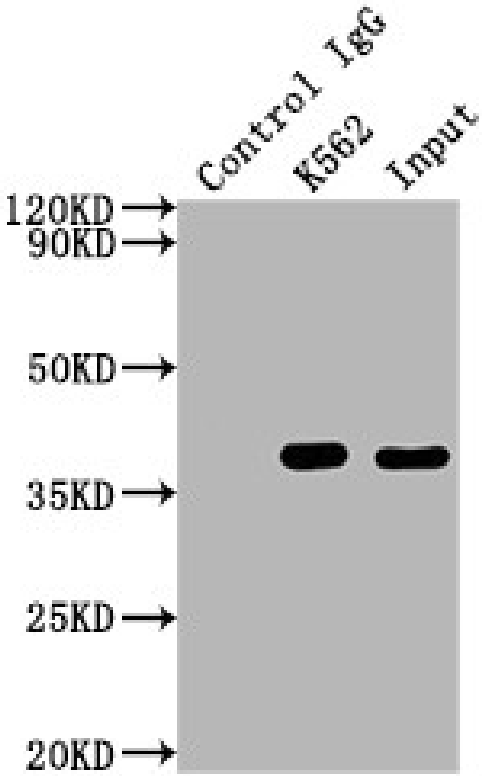
This antibody has been tested in direct-ELISA

Product Images For CDK6 Recombinant Rabbit Monoclonal Antibody (8G3)



CDK6 Antibody (MA5-38360) in WB

Western Blot analysis of CDK6 using CDK6 Monoclonal Antibody (Product # MA5-38360) at 1:2,000. Positive WB detected in: HeLa whole cell lysate, Jurkat whole cell lysate, K562 whole cell lysate, 293 whole cell lysate. Secondary: Goat polyclonal to rabbit IgG at 1:50,000 dilution. Predicted band size: 37 kDa. Observed band size: 37 kDa



CDK6 Antibody (MA5-38360) in IP

Immunoprecipitating CDK6 in K562 whole cell lysate. Lane 1: Rabbit control IgG K562 whole cell lysate. For western blotting, a HRP-conjugated Protein G antibody was used as the secondary antibody (1:2,000). Lane 2: CDK6 Monoclonal Antibody (Product # MA5-38360) (2 µg) + K562 whole cell lysate (500 µg). Lane 3: K562 whole cell lysate (10 µg).

For Research Use Only. Not for use in diagnostic procedures. Not for resale without express authorization. Products are warranted to operate or perform substantially in conformance with published Product specifications in effect at the time of sale, as set forth in the Production documentation, specifications and/or accompanying package inserts ("Documentation"). No claim of suitability for use in applications regulated by FDA is made. The warranty provided herein is valid only when used by properly trained individuals. Unless otherwise stated in the Documentation, this warranty is limited to one year from date of shipment when the Product is subjected to normal, proper and intended usage. This warranty does not extend to anyone other than the Buyer. Any model or sample furnished to Buyer is merely illustrative of the general type and quality of goods and does not represent that any Product will conform to such model or sample. NO OTHER WARRANTIES, EXPRESS OR IMPLIED, ARE GRANTED INCLUDING WITHOUT LIMITATION, IMPLIED WARRANTIES OF MERCHANTABILITY, FITNESS FOR ANY PARTICULAR PURPOSE, OR NON INFRINGEMENT. BUYER'S EXCLUSIVE REMEDY FOR NON-CONFORMING PRODUCTS DURING THE WARRANTY PERIOD IS LIMITED TO REPAIR, REPLACEMENT OF OR REFUND FOR THE NON-CONFORMING PRODUCT(S) AT SELLER'S SOLE OPTION. THERE IS NO OBLIGATION TO REPAIR, REPLACE OR REFUND FOR PRODUCTS AS THE RESULT OF (I) ACCIDENT, DISASTER OR EVENT OF FORCE MAJEURE, (II) MISUSE, FAULT OR NEGLIGENCE OF OR BY BUYER, (III) USE OF THE PRODUCTS IN A MANNER FOR WHICH THEY WERE NOT DESIGNED, OR (IV) IMPROPER STORAGE AND HANDLING OF THE PRODUCTS. Unless otherwise expressly stated on the Product or in the documentation accompanying the Product, the Product is intended for research only and is not to be used for any other purpose, including without limitation, unauthorized commercial uses, in vitro diagnostic uses, ex vivo or in vivo therapeutic uses, or any type of consumption by or application to human or animals.