

CD16 Monoclonal Antibody (3G8), DyLight™ 594

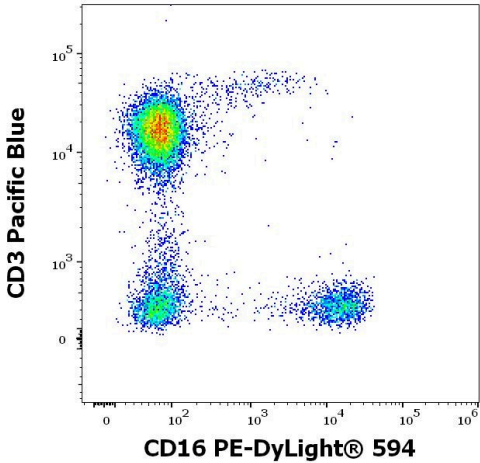
Product Details	
Size	100 Tests
Species Reactivity	Human, Non-human primate
Host/Isotype	Mouse / IgG1, kappa
Class	Monoclonal
Type	Antibody
Clone	3G8
Conjugate	DyLight™ 594
Excitation/Emission Max	587/614 nm
Immunogen	Human neutrophils
Form	Liquid
Concentration	130 µg/mL
Purification	Size-exclusion chromatography
Storage buffer	PBS, pH 7.4, with 0.2% BSA
Contains	15mM sodium azide
Storage conditions	4° C, store in dark, DO NOT FREEZE!
RRID	AB_2898606

Applications	Tested Dilution	Publications
Flow Cytometry (Flow)	4 µL/1x10^6 cells	-

Product Specific Information

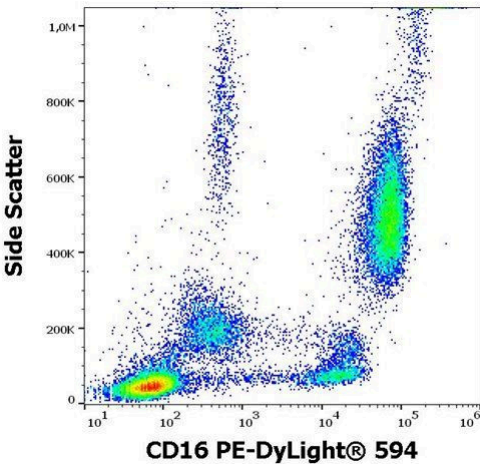
Do not use after expiration date stamped on vial label.

Product Images For CD16 Monoclonal Antibody (3G8), DyLight™ 594



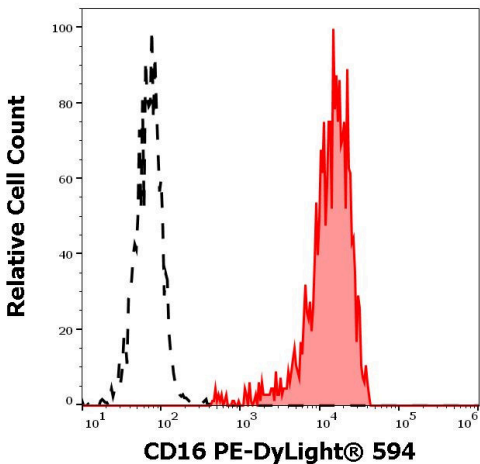
CD16 Antibody (MA5-38694) in Flow

Flow cytometry of CD16 in human lymphocytes. Samples were incubated with CD16 monoclonal antibody (Product # MA5-38694) followed by PE-DyLight 594 and Pacific Blue at a dilution of 4 µL reagent/100 µL of peripheral whole blood.



CD16 Antibody (MA5-38694) in Flow

Flow cytometry of CD16 in human peripheral whole blood. Samples were incubated with CD16 monoclonal antibody (Product # MA5-38694) followed by PE-DyLight 594 at a dilution of 4 µL reagent/100 µL of peripheral whole blood.



CD16 Antibody (MA5-38694) in Flow

Flow cytometry of CD16 in negative NK cells (red-filled) and positive T cells (black-dashed). Samples were incubated with CD16 monoclonal antibody (Product # MA5-38694) followed by PE-DyLight 594 at a dilution of 4 µL reagent /100 µL of peripheral whole blood.

For Research Use Only. Not for use in diagnostic procedures. Not for resale without express authorization. Products are warranted to operate or perform substantially in conformance with published Product specifications in effect at the time of sale, as set forth in the Production documentation, specifications and/or accompanying package inserts ("Documentation"). No claim of suitability for use in applications regulated by FDA is made. The warranty provided herein is valid only when used by properly trained individuals. Unless otherwise stated in the Documentation, this warranty is limited to one year from date of shipment when the Product is subjected to normal, proper and intended usage. This warranty does not extend to anyone other than the Buyer. Any model or sample furnished to Buyer is merely illustrative of the general type and quality of goods and does not represent that any Product will conform to such model or sample. NO OTHER WARRANTIES, EXPRESS OR IMPLIED, ARE GRANTED INCLUDING WITHOUT LIMITATION, IMPLIED WARRANTIES OF MERCHANTABILITY, FITNESS FOR ANY PARTICULAR PURPOSE, OR NON INFRINGEMENT. BUYER'S EXCLUSIVE REMEDY FOR NON-CONFORMING PRODUCTS DURING THE WARRANTY PERIOD IS LIMITED TO REPAIR, REPLACEMENT OF OR REFUND FOR THE NON-CONFORMING PRODUCT(S) AT SELLER'S SOLE OPTION. THERE IS NO OBLIGATION TO REPAIR, REPLACE OR REFUND FOR PRODUCTS AS THE RESULT OF (i) ACCIDENT, DISASTER OR EVENT OF FORCE MAJEURE, (ii) MISUSE, FAULT OR NEGLIGENCE OF OR BY BUYER, (iii) USE OF THE PRODUCTS IN A MANNER FOR WHICH THEY WERE NOT DESIGNED, OR (iv) IMPROPER STORAGE AND HANDLING OF THE PRODUCTS. Unless otherwise expressly stated on the Product or in the documentation accompanying the Product, the Product is intended for research only and is not to be used for any other purpose, including without limitation, unauthorized commercial uses, in vitro diagnostic uses, ex vivo or in vivo therapeutic uses, or any type of consumption by or application to human or animals.