

# CD158a Recombinant Rabbit Monoclonal Antibody (124), APC

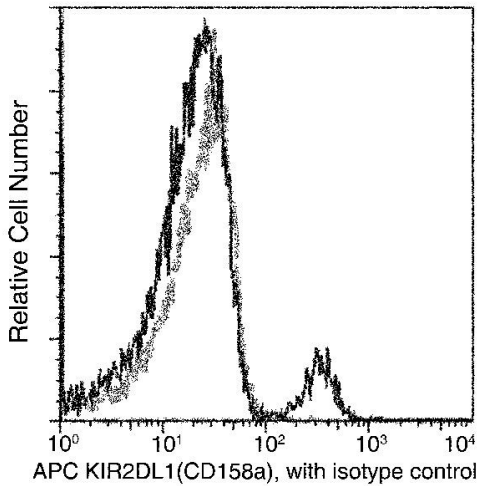
Product Details	
Size	100 Tests
Species Reactivity	Human
Host/Isotype	Rabbit / IgG
Expression system	HEK293 cells
Class	Recombinant Monoclonal
Type	Antibody
Clone	124
Conjugate	APC
Excitation/Emission Max	651/660 nm
Immunogen	Recombinant Human KIR2DL1/CD158a protein
Form	Liquid
Concentration	0.1 mg/mL
Purification	Protein A
Storage buffer	PBS with 0.5% BSA
Contains	0.09% sodium azide
Storage conditions	4° C, store in dark, DO NOT FREEZE!
RRID	AB_2898721

Applications	Tested Dilution	Publications
Flow Cytometry (Flow)	Assay-dependent	-

## Product Specific Information

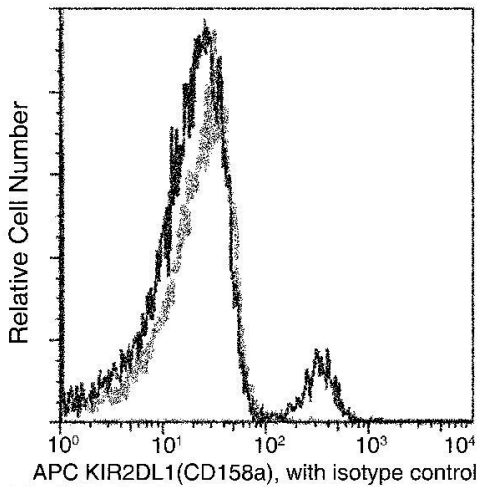
May be stored for twelve months without detectable loss of activity. Protect from prolonged exposure to light and do not freeze. Sodium azide is toxic to cells and should be disposed of properly so flush with large volumes of water during disposal.

Product Images For CD158a Recombinant Rabbit Monoclonal Antibody (124), APC



CD158a Antibody (MA5-40960) in Flow

Flow cytometric analysis of human CD158a expression on human whole blood lymphocytes. Human whole blood lymphocytes were stained with CD158a Recombinant Rabbit Monoclonal Antibody (124), APC (Product # MA5-40960). The histograms were derived from gated events with the forward and side light-scatter characteristics of viable lymphocytes.



CD158a Antibody (MA5-40960) in Flow

Flow Cytometry of KIR2DL1 in human whole blood lymphocytes. Samples were incubated with monoclonal KIR2DL1 (Product # MA5-40960) followed by APC. The histogram were derived from gated events with the forward and side light-scatter characteristics of viable lymphocytes.

For Research Use Only. Not for use in diagnostic procedures. Not for resale without express authorization. Products are warranted to operate or perform substantially in conformance with published Product specifications in effect at the time of sale, as set forth in the Production documentation, specifications and/or accompanying package inserts ("Documentation"). No claim of suitability for use in applications regulated by FDA is made. The warranty provided herein is valid only when used by properly trained individuals. Unless otherwise stated in the Documentation, this warranty is limited to one year from date of shipment when the Product is subjected to normal, proper and intended usage. This warranty does not extend to anyone other than the Buyer. Any model or sample furnished to Buyer is merely illustrative of the general type and quality of goods and does not represent that any Product will conform to such model or sample. NO OTHER WARRANTIES, EXPRESS OR IMPLIED, ARE GRANTED INCLUDING WITHOUT LIMITATION, IMPLIED WARRANTIES OF MERCHANTABILITY, FITNESS FOR ANY PARTICULAR PURPOSE, OR NON INFRINGEMENT. BUYER'S EXCLUSIVE REMEDY FOR NON-CONFORMING PRODUCTS DURING THE WARRANTY PERIOD IS LIMITED TO REPAIR, REPLACEMENT OF OR REFUND FOR THE NON-CONFORMING PRODUCT(S) AT SELLER'S SOLE OPTION. THERE IS NO OBLIGATION TO REPAIR, REPLACE OR REFUND FOR PRODUCTS AS THE RESULT OF (I) ACCIDENT, DISASTER OR EVENT OF FORCE MAJEURE, (II) MISUSE, FAULT OR NEGLIGENCE OF OR BY BUYER, (III) USE OF THE PRODUCTS IN A MANNER FOR WHICH THEY WERE NOT DESIGNED, OR (IV) IMPROPER STORAGE AND HANDLING OF THE PRODUCTS. Unless otherwise expressly stated on the Product or in the documentation accompanying the Product, the Product is intended for research only and is not to be used for any other purpose, including without limitation, unauthorized commercial uses, in vitro diagnostic uses, ex vivo or in vivo therapeutic uses, or any type of consumption by or application to human or animals.