

CD11b Monoclonal Antibody (ICRF44)

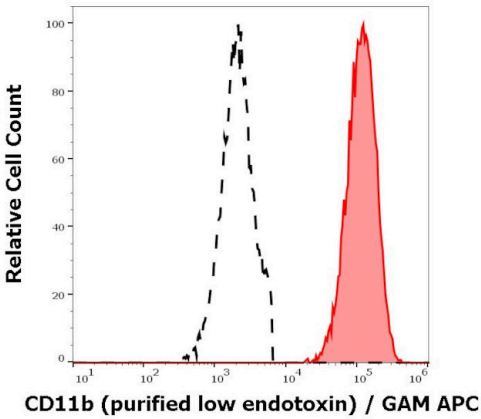
Product Details	
Size	100 µg
Species Reactivity	Human, Non-human primate
Host/Isotype	Mouse / IgG1
Class	Monoclonal
Type	Antibody
Clone	ICRF44
Conjugate	Unconjugated
Immunogen	Rheumatoid synovial cells and human monocytes
Form	Liquid
Concentration	1 mg/mL
Purification	Protein A
Storage buffer	PBS, pH 7.4
Contains	no preservative
Storage conditions	4° C, do not freeze
RRID	AB_2913008

Applications	Tested Dilution	Publications
Immunohistochemistry (Frozen) (IHC (F))	Assay-dependent	-
Immunocytochemistry (ICC/IF)	Assay-dependent	-
Flow Cytometry (Flow)	1-12 µg/mL	-
Immunoprecipitation (IP)	Assay-dependent	-
Functional Assay (FN)	Assay-dependent	-

Product Specific Information

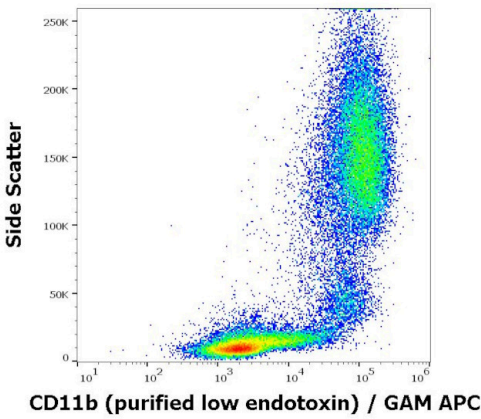
Functional application: Blocking of granulocyte activation

Product Images For CD11b Monoclonal Antibody (ICRF44)



CD11b Antibody (MA5-44076) in Flow

Separation of human neutrophil granulocytes (red-filled) from CD11b negative lymphocytes (black-dashed) in flow cytometry analysis (surface staining) of human peripheral whole blood stained using anti-human CD11b (ICRF44) purified Monoclonal antibody (Product # MA5-44076) (low endotoxin, concentration in sample 6 µg/mL) GAM APC.



CD11b Antibody (MA5-44076) in Flow

Flow cytometry surface staining pattern of human peripheral blood stained using anti-human CD11b (ICRF44) purified Monoclonal antibody (Product # MA5-44076) (low endotoxin, concentration in sample 6 µg/mL) GAM APC.

For Research Use Only. Not for use in diagnostic procedures. Not for resale without express authorization. Products are warranted to operate or perform substantially in conformance with published Product specifications in effect at the time of sale, as set forth in the Production documentation, specifications and/or accompanying package inserts ("Documentation"). No claim of suitability for use in applications regulated by FDA is made. The warranty provided herein is valid only when used by properly trained individuals. Unless otherwise stated in the Documentation, this warranty is limited to one year from date of shipment when the Product is subjected to normal, proper and intended usage. This warranty does not extend to anyone other than the Buyer. Any model or sample furnished to Buyer is merely illustrative of the general type and quality of goods and does not represent that any Product will conform to such model or sample. NO OTHER WARRANTIES, EXPRESS OR IMPLIED, ARE GRANTED INCLUDING WITHOUT LIMITATION, IMPLIED WARRANTIES OF MERCHANTABILITY, FITNESS FOR ANY PARTICULAR PURPOSE, OR NON INFRINGEMENT. BUYER'S EXCLUSIVE REMEDY FOR NON-CONFORMING PRODUCTS DURING THE WARRANTY PERIOD IS LIMITED TO REPAIR, REPLACEMENT OF OR REFUND FOR THE NON-CONFORMING PRODUCT(S) AT SELLER'S SOLE OPTION. THERE IS NO OBLIGATION TO REPAIR, REPLACE OR REFUND FOR PRODUCTS AS THE RESULT OF (I) ACCIDENT, DISASTER OR EVENT OF FORCE MAJEURE, (II) MISUSE, FAULT OR NEGLIGENCE OF OR BY BUYER, (III) USE OF THE PRODUCTS IN A MANNER FOR WHICH THEY WERE NOT DESIGNED, OR (IV) IMPROPER STORAGE AND HANDLING OF THE PRODUCTS. Unless otherwise expressly stated on the Product or in the documentation accompanying the Product, the Product is intended for research only and is not to be used for any other purpose, including without limitation, unauthorized commercial uses, in vitro diagnostic uses, ex vivo or in vivo therapeutic uses, or any type of consumption by or application to human or animals.