

# beta Actin Recombinant Rabbit Monoclonal Antibody (BLR057F)

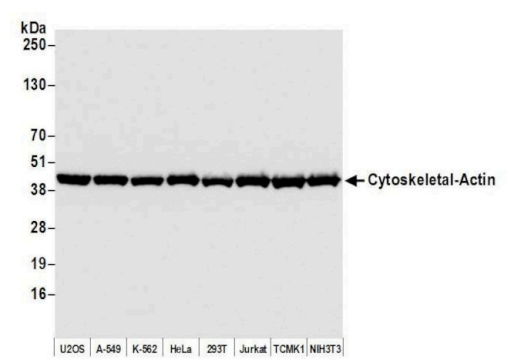
Product Details	
Size	10 µL
Species Reactivity	Human, Mouse
Host/Isotype	Rabbit / IgG
Expression system	HEK293 cells
Class	Recombinant Monoclonal
Type	Antibody
Clone	BLR057F
Conjugate	Unconjugated
Immunogen	A peptide representing a region between residues 1 and 50 of human Actin Beta.
Form	Liquid
Concentration	10 µg/mL
Purification	purified
Storage buffer	BBS, pH 8.2, with 0.1% BSA
Contains	0.09% sodium azide
Storage conditions	2-8°C
RRID	AB_2926438

Applications	Tested Dilution	Publications
Western Blot (WB)	1:1,000	-
Immunohistochemistry (Paraffin) (IHC (P))	1:100-1:500	-
Immunocytochemistry (ICC/IF)	1:100-1:500	-

## Product Specific Information

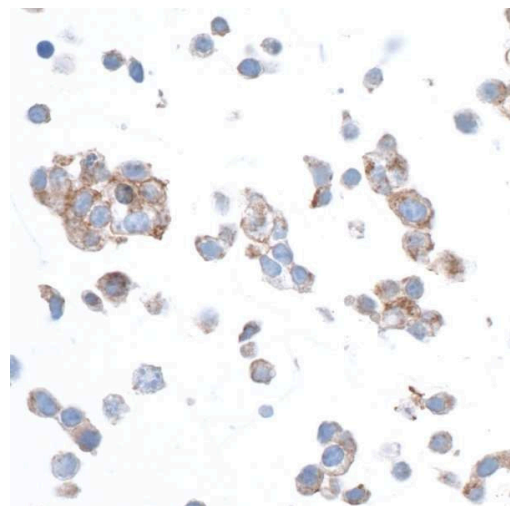
Epitope retrieval with citrate buffer pH6.0 is recommended for FFPE cell sections.

Product Images For beta Actin Recombinant Rabbit Monoclonal Antibody (BLR057F)



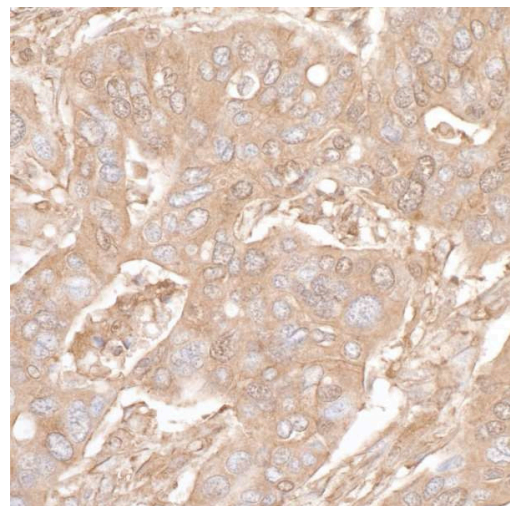
beta Actin Antibody (MA5-44308) in WB

Western Blot of beta Actin in whole cell lysate (50 µg) from U2OS, A-549, K-562, HeLa, HEK293T, Jurkat, TCMK-1, and NIH 3T3 cells. Samples were treated with NETN lysis buffer, incubated with beta Actin monoclonal antibody (Product # MA5-44308) at a dilution of 1:1000, followed by HRP-conjugated goat anti-rabbit IgG (exposure time of 1 second).



beta Actin Antibody (MA5-44308) in ICC/IF

Immunocytochemistry analysis of beta Actin in HeLa cells. Samples were incubated with beta Actin monoclonal antibody (Product # MA5-44308) at a dilution of 1:200 followed by HRP-conjugated goat anti-rabbit IgG and DAB.



beta Actin Antibody (MA5-44308) in IHC (P)

Immunohistochemistry analysis of beta Actin in paraffin-embedded ovarian carcinoma. Samples were incubated with beta Actin monoclonal antibody (Product # MA5-44308) at a dilution of 1:400, HRP-conjugated goat anti-rabbit IgG and DAB.

For Research Use Only. Not for use in diagnostic procedures. Not for resale without express authorization. Products are warranted to operate or perform substantially in conformance with published Product specifications in effect at the time of sale, as set forth in the Production documentation, specifications and/or accompanying package inserts ("Documentation"). No claim of suitability for use in applications regulated by FDA is made. The warranty provided herein is valid only when used by properly trained individuals. Unless otherwise stated in the Documentation, this warranty is limited to one year from date of shipment when the Product is subjected to normal, proper and intended usage. This warranty does not extend to anyone other than the Buyer. Any model or sample furnished to Buyer is merely illustrative of the general type and quality of goods and does not represent that any Product will conform to such model or sample. NO OTHER WARRANTIES, EXPRESS OR IMPLIED, ARE GRANTED INCLUDING WITHOUT LIMITATION, IMPLIED WARRANTIES OF MERCHANTABILITY, FITNESS FOR ANY PARTICULAR PURPOSE, OR NON INFRINGEMENT. BUYER'S EXCLUSIVE REMEDY FOR NON-CONFORMING PRODUCTS DURING THE WARRANTY PERIOD IS LIMITED TO REPAIR, REPLACEMENT OF OR REFUND FOR THE NON-CONFORMING PRODUCT(S) AT SELLER'S SOLE OPTION. THERE IS NO OBLIGATION TO REPAIR, REPLACE OR REFUND FOR PRODUCTS AS THE RESULT OF (I) ACCIDENT, DISASTER OR EVENT OF FORCE MAJEURE, (II) MISUSE, FAULT OR NEGLIGENCE OF OR BY BUYER, (III) USE OF THE PRODUCTS IN A MANNER FOR WHICH THEY WERE NOT DESIGNED, OR (IV) IMPROPER STORAGE AND HANDLING OF THE PRODUCTS. Unless otherwise expressly stated on the Product or in the documentation accompanying the Product, the Product is intended for research only and is not to be used for any other purpose, including without limitation, unauthorized commercial uses, in vitro diagnostic uses, ex vivo or in vivo therapeutic uses, or any type of consumption by or application to human or animals.