

Rhodopsin Monoclonal Antibody (4D2), APC

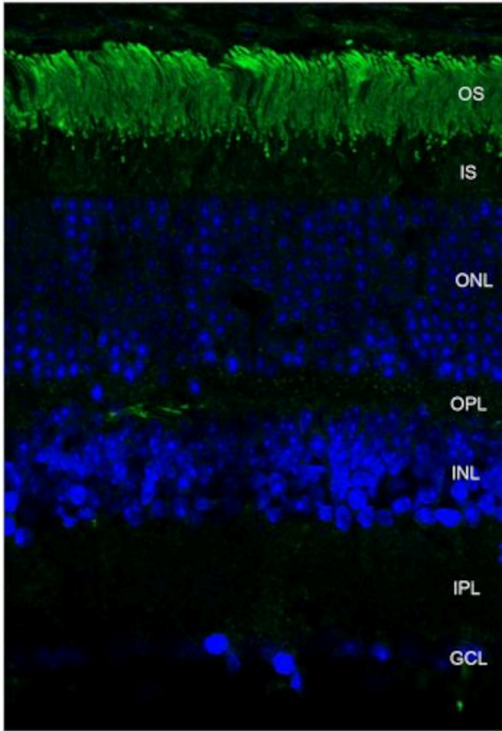
Product Details	
Size	100 µg
Species Reactivity	Amphibian, Avian, Fish, Mammal, Shark
Host/Isotype	Mouse / IgG1
Class	Monoclonal
Type	Antibody
Clone	4D2
Conjugate	APC
Excitation/Emission Max	651/660 nm
Immunogen	Bovine Rhodopsin
Form	Liquid
Concentration	1 mg/mL
Purification	Protein G
Storage buffer	47.35mM phosphate/2.15mM MES, pH 7.4, with 1.033mM EDTA
Contains	no preservative
Storage conditions	4° C

Applications	Tested Dilution	Publications
Western Blot (WB)	1:1,000	-
Immunohistochemistry (IHC)	1:1,000	-
Immunocytochemistry (ICC/IF)	Assay-dependent	-
ELISA (ELISA)	Assay-dependent	-
Immunoprecipitation (IP)	Assay-dependent	-

Product Specific Information

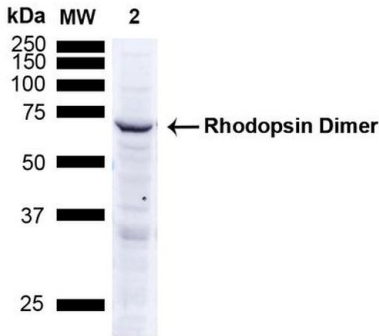
1 µg/mL of MA5-45244 was sufficient for detection of rhodopsin in 10 µg of rat eye lysate by colorimetric immunoblot analysis using Goat anti-mouse IgG:HRP as the secondary antibody. | Detects approximately 40kDa. Binds specifically to the N-terminus of Rhodopsin. Does not detect Rhodopsin in invertebrates.

Product Images For Rhodopsin Monoclonal Antibody (4D2), APC



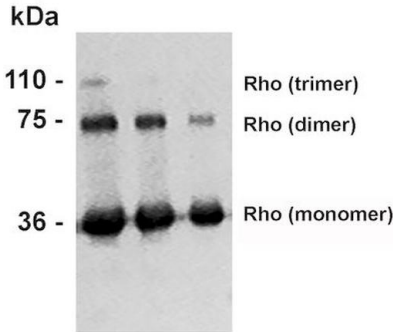
Rhodopsin Antibody (MA5-45244) in IHC

Immunohistochemistry analysis using retina. Samples were incubated with Rhodopsin monoclonal antibody (Product # MA5-45244) at 1:1,000, followed by FITC Goat Anti-Mouse (green). Counterstain used was DAPI (blue) nuclear stain. Localization: Staining of photoreceptor outer segment (OS). Other layers of the retina: IS – inner segment; ONL – outer nuclear layer; OPL – outer plexiform layer; INL – inner nuclear layer; IPL – inner plexiform layer; GCL – ganglion cell layer.



Rhodopsin Antibody (MA5-45244) in WB

Western Blot analysis of Human A549 cells. Load: 15 µg. Blocking: 5% Skim Milk Powder in TBST. Samples were incubated with Rhodopsin monoclonal antibody (Product # MA5-45244) at 1:1,000 for 2.5 hours at RT with shaking, followed by Goat anti-mouse IgG:HRP at 1:1,000 for 1 hour at RT with shaking. Color Development: Chemiluminescent for HRP (Moss) for 5 min in RT. Predicted /Observed Size: ~38.9 kDa. Other Band(s): Band appears at ~75 kDa indicating detection of the Rhodopsin dimer.



Rhodopsin Antibody (MA5-45244) in WB

Western Blot analysis of Bovine photoreceptor membranes showing detection of Rhodopsin protein. Lane 1: MW ladder. Lane 2: 10 µg. Lane 3: 5 µg. Lane 4: 2.5 µg. Samples were incubated with Rhodopsin monoclonal antibody (Product # MA5-45244) at 1:1,000.

For Research Use Only. Not for use in diagnostic procedures. Not for resale without express authorization. Products are warranted to operate or perform substantially in conformance with published Product specifications in effect at the time of sale, as set forth in the Production documentation, specifications and/or accompanying package inserts ("Documentation"). No claim of suitability for use in applications regulated by FDA is made. The warranty provided herein is valid only when used by properly trained individuals. Unless otherwise stated in the Documentation, this warranty is limited to one year from date of shipment when the Product is subjected to normal, proper and intended usage. This warranty does not extend to anyone other than the Buyer. Any model or sample furnished to Buyer is merely illustrative of the general type and quality of goods and does not represent that any Product will conform to such model or sample. NO OTHER WARRANTIES, EXPRESS OR IMPLIED, ARE GRANTED INCLUDING WITHOUT LIMITATION, IMPLIED WARRANTIES OF MERCHANTABILITY, FITNESS FOR ANY PARTICULAR PURPOSE, OR NON INFRINGEMENT. BUYER'S EXCLUSIVE REMEDY FOR NON-CONFORMING PRODUCTS DURING THE WARRANTY PERIOD IS LIMITED TO REPAIR, REPLACEMENT OF OR REFUND FOR THE NON-CONFORMING PRODUCT(S) AT SELLER'S SOLE OPTION. THERE IS NO OBLIGATION TO REPAIR, REPLACE OR REFUND FOR PRODUCTS AS THE RESULT OF (I) ACCIDENT, DISASTER OR EVENT OF FORCE MAJEURE, (II) MISUSE, FAULT OR NEGLIGENCE OF OR BY BUYER, (III) USE OF THE PRODUCTS IN A MANNER FOR WHICH THEY WERE NOT DESIGNED, OR (IV) IMPROPER STORAGE AND HANDLING OF THE PRODUCTS. Unless otherwise expressly stated on the Product or in the documentation accompanying the Product, the Product is intended for research only and is not to be used for any other purpose, including without limitation, unauthorized commercial uses, in vitro diagnostic uses, ex vivo or in vivo therapeutic uses, or any type of consumption by or application to human or animals.