

# alpha Synuclein Monoclonal Antibody (3C11), PerCP

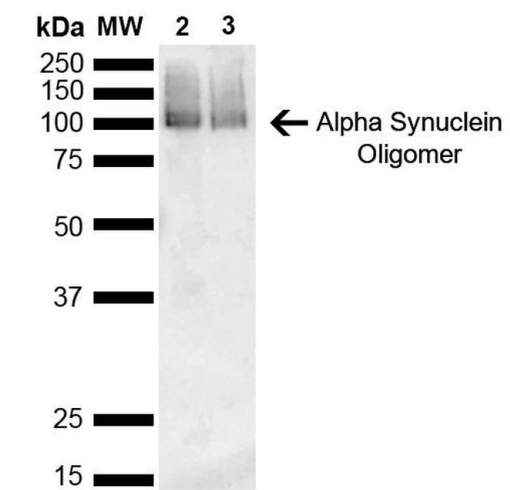
| Product Details         |   |
|-------------------------|---|
| Size                    | 100 µg  |
| Species Reactivity      | Human, Mouse, Rat                                       |
| Host/Isotype            | Mouse / IgG1  |
| Class                   | Monoclonal  |
| Type                    | Antibody  |
| Clone                   | 3C11  |
| Conjugate               | PerCP   |
| Excitation/Emission Max | 482/675 nm  |
| Immunogen               | Human alpha synuclein monomer                           |
| Form                    | Liquid  |
| Concentration           | 1 mg/mL   |
| Purification            | Protein G   |
| Storage buffer          | 47.35mM phosphate/2.15mM MES, pH 7.4, with 1.033mM EDTA |
| Contains                | no preservative   |
| Storage conditions      | 4° C  |

| Applications                              | Tested Dilution | Publications |
|---|-----------------|--------------|
| Western Blot (WB)                         | 1:1,000         | -            |
| Immunohistochemistry (Paraffin) (IHC (P)) | 1:25            | -            |
| Immunocytochemistry (ICC/IF)              | 1:100           | -            |
| ELISA (ELISA)                             | 1:1,000         | -            |
| Dot blot (DB)                             | 1:1,000         | -            |

## Product Specific Information

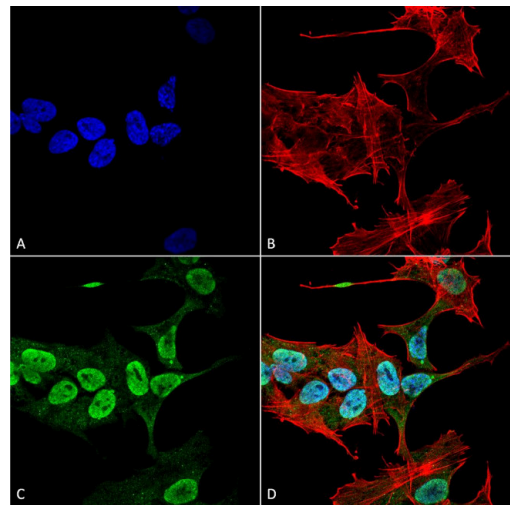
A 1:1,000 dilution of MA5-45839 was sufficient for detection of Alpha Synuclein in 15 µg of human brain cell lysate by ECL immunoblot analysis using goat anti-mouse IgG:HRP as the secondary antibody.[Binds within the 81-130 aa region of human alpha synuclein, determined using WB and ELISA with corresponding peptides. Detects approximately 14 kDa band corresponding to Alpha synuclein. Band at approximately 30 kDa is a dimer.

Product Images For alpha Synuclein Monoclonal Antibody (3C11), PerCP



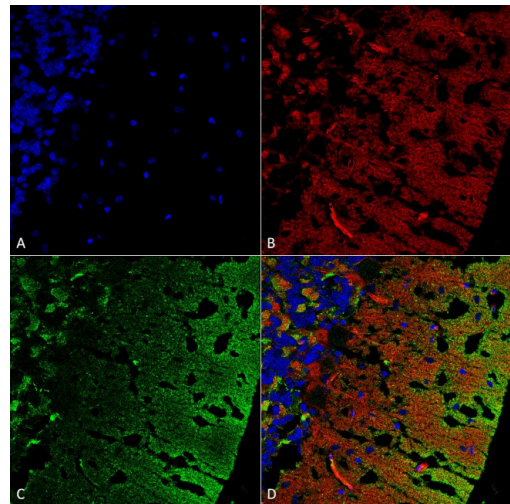
alpha Synuclein Antibody (MA5-45839) in WB

Western Blot analysis of Mouse, Rat Brain showing detection of 14 kDa Alpha Synuclein protein. Lane 1: Molecular Weight Ladder (MW). Lane 2: Mouse brain cell lysate. Lane 3: Rat brain cell lysate. Load: 15 µg. Blocking: 5% Skim Milk in 1X TBST. Samples were incubated with Alpha Synuclein monoclonal antibody (Product # MA5-45839) at 1:1,000 for 2 hours at RT, followed by Goat Anti-Mouse HRP:lgG at 1:3,000 for 1 hour at RT. Color Development: ECL solution (Super Signal West Pico) for 5 min in RT. Predicted/Observed Size: 14 kDa. Other Band(s): ~30 kDa (dimer).



alpha Synuclein Antibody (MA5-45839) in ICC/IF

Immunocytochemistry/Immunofluorescence analysis using human neuroblastoma cells. Fixation involved 4% Formaldehyde for 15 min at RT. Samples were incubated with Alpha Synuclein monoclonal antibody (Product # MA5-45839) at 1:100 for 60 min at RT, followed by Goat Anti-Mouse ATTO 488 at 1:200 for 60 min at RT. Counterstain used was Phalloidin Texas Red F-Actin stain; DAPI (blue) nuclear stain at 1:1,000, 1:5,000 for 60 min at RT, 5 min at RT. Localization: Cytoplasm: weak; Nucleus: Med. Magnification: 60X. (A) DAPI (blue) nuclear stain. (B) Phalloidin Texas Red F-Actin stain. (C) Alpha Synuclein antibody. (D) Composite.



alpha Synuclein Antibody (MA5-45839) in IHC (P)

Immunohistochemistry analysis using cerebellum. Fixation involved formalin fixed, paraffin embedded treatment. Samples were incubated with Alpha Synuclein monoclonal antibody (Product # MA5-45839) at 1:25 for 1 hour at RT, followed by Goat Anti-Mouse IgG: Alexa Fluor 488. Counterstain used was Actin-binding Phalloidin-Alexa Fluor 633; DAPI (blue) nuclear stain. Magnification: 63X. (A) DAPI (blue) nuclear stain. (B) Phalloidin Alexa Fluor 633 F-Actin stain. (C) Alpha Synuclein antibody (D) Composite.

View more figures on [thermofisher.com](https://thermofisher.com)

For Research Use Only. Not for use in diagnostic procedures. Not for resale without express authorization. Products are warranted to operate or perform substantially in conformance with published Product specifications in effect at the time of sale, as set forth in the Production documentation, specifications and/or accompanying package inserts ("Documentation"). No claim of suitability for use in applications regulated by FDA is made. The warranty provided herein is valid only when used by properly trained individuals. Unless otherwise stated in the Documentation, this warranty is limited to one year from date of shipment when the Product is subjected to normal, proper and intended usage. This warranty does not extend to anyone other than the Buyer. Any model or sample furnished to Buyer is merely illustrative of the general type and quality of goods and does not represent that any Product will conform to such model or sample. NO OTHER WARRANTIES, EXPRESS OR IMPLIED, ARE GRANTED INCLUDING WITHOUT LIMITATION, IMPLIED WARRANTIES OF MERCHANTABILITY, FITNESS FOR ANY PARTICULAR PURPOSE, OR NON INFRINGEMENT. BUYER'S EXCLUSIVE REMEDY FOR NON-CONFORMING PRODUCTS DURING THE WARRANTY PERIOD IS LIMITED TO REPAIR, REPLACEMENT OF OR REFUND FOR THE NON-CONFORMING PRODUCT(S) AT SELLER'S SOLE OPTION. THERE IS NO OBLIGATION TO REPAIR, REPLACE OR REFUND FOR PRODUCTS AS THE RESULT OF (i) ACCIDENT, DISASTER OR EVENT OF FORCE MAJEURE, (ii) MISUSE, FAULT OR NEGLIGENCE OF OR BY BUYER, (iii) USE OF THE PRODUCTS IN A MANNER FOR WHICH THEY WERE NOT DESIGNED, OR (iv) IMPROPER STORAGE AND HANDLING OF THE PRODUCTS. Unless otherwise expressly stated on the Product or in the documentation accompanying the Product, the Product is intended for research only and is not to be used for any other purpose, including without limitation, unauthorized commercial uses, in vitro diagnostic uses, ex vivo or in vivo therapeutic uses, or any type of consumption by or application to human or animals.