

# Phospho-alpha Synuclein (Ser129) Recombinant Rabbit Monoclonal Antibody (J18), PerCP

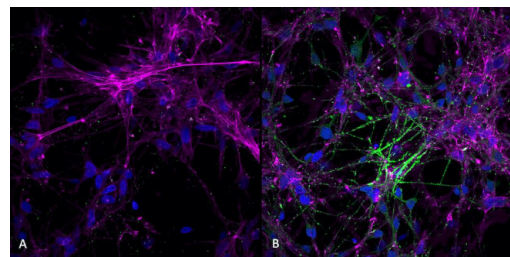
Product Details	
Size	100 µg
Species Reactivity	Human, Mouse
Host/Isotype	Rabbit / IgG
Expression system	HEK293 cells
Class	Recombinant Monoclonal
Type	Antibody
Clone	J18
Conjugate	PerCP
Excitation/Emission Max	482/675 nm
Immunogen	Human alpha synuclein AA 124-134: AYEMP-pS-EEGYQ-Cys
Form	Liquid
Concentration	1 mg/mL
Purification	Affinity chromatography
Storage buffer	47.35mM phosphate/2.15mM MES, pH 7.4, with 1.033mM EDTA
Contains	no preservative
Storage conditions	4° C

Applications	Tested Dilution	Publications
Western Blot (WB)	1:500	-
Immunohistochemistry (IHC)	Assay-dependent	-
Immunocytochemistry (ICC/IF)	Assay-dependent	-
ELISA (ELISA)	Assay-dependent	-
Dot blot (DB)	1:500	-

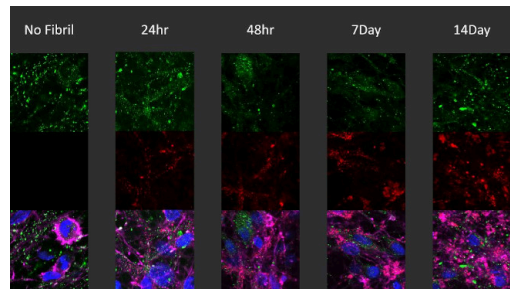
## Product Specific Information

A 1:500 dilution of MA5-45932 was sufficient for detection of Alpha Synuclein pSer129 in 10 µg of Mouse Brain by ECL immunoblot analysis using Goat Anti-Rabbit IgG:HRP as the secondary antibody.|Binds to phosphorylated serine 129 on alpha synuclein. Does not detect unphosphorylated serine 129 alpha synuclein

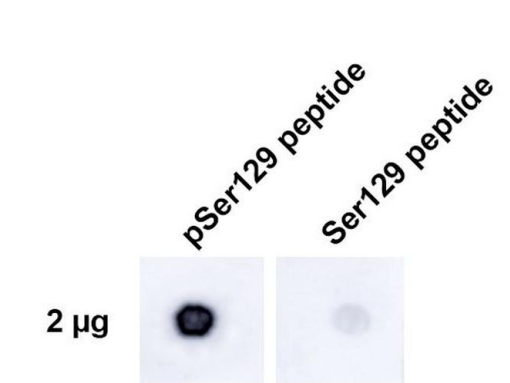
Product Images For Phospho-alpha Synuclein (Ser129) Recombinant Rabbit Monoclonal Antibody (J18), PerCP



**Phospho-alpha Synuclein (Ser129) Antibody (MA5-45932) in ICC/IF**  
Immunocytochemistry/Immunofluorescence analysis using human iPSC-derived neurons. Samples were incubated with Phospho-alpha Synuclein (Ser129) monoclonal antibody (Product # MA5-45932) at 1:1,000 for O/N at 4°C, followed by Anti-Rabbit: A488 at 1:1,000 for 1 hour at RT. Magnification: 40X. Nuclear stain: Hoechst- 20 min, RT (blue). Actin stain: Phalloidin-647- 20 min, RT (magenta). 4K cells. Sonicated before use, 2.5 µg per well.



**Phospho-alpha Synuclein (Ser129) Antibody (MA5-45932) in ICC/IF**  
Immunocytochemistry/Immunofluorescence analysis of human iPSC-derived neurons treated with 2.5 µg ATTO 594 labeled type I alpha-synuclein pre-formed fibrils for up to 14 days. Cells seeded at 8k cells per well. Green: mouse anti-Phospho-alpha Synuclein (Ser129) monoclonal antibody (Product # MA5-45932) 1:5,000; Red: alpha-synuclein PFFs; Pink: actin; Blue: Hoechst/DNA.



**Phospho-alpha Synuclein (Ser129) Antibody (MA5-45932) in DB**  
Dot Blot analysis using alpha synuclein peptide. Samples were incubated with Phospho-alpha Synuclein (Ser129) monoclonal antibody (Product # MA5-45932) at 1:500 for 2 hours at RT with shaking, followed by Goat anti-rabbit IgG:HRP at 1:4,000 for 1 hour at RT with shaking. Phospho peptide sequence: AYEMP-pS-EEGYQ. Non-phospho peptide sequence: AYEMPSEEGYQ. This sequence is the same for human, mouse, and rat.

For Research Use Only. Not for use in diagnostic procedures. Not for resale without express authorization. Products are warranted to operate or perform substantially in conformance with published Product specifications in effect at the time of sale, as set forth in the Production documentation, specifications and/or accompanying package inserts ("Documentation"). No claim of suitability for use in applications regulated by FDA is made. The warranty provided herein is valid only when used by properly trained individuals. Unless otherwise stated in the Documentation, this warranty is limited to one year from date of shipment when the Product is subjected to normal, proper and intended usage. This warranty does not extend to anyone other than the Buyer. Any model or sample furnished to Buyer is merely illustrative of the general type and quality of goods and does not represent that any Product will conform to such model or sample. NO OTHER WARRANTIES, EXPRESS OR IMPLIED, ARE GRANTED INCLUDING WITHOUT LIMITATION, IMPLIED WARRANTIES OF MERCHANTABILITY, FITNESS FOR ANY PARTICULAR PURPOSE, OR NON INFRINGEMENT. BUYER'S EXCLUSIVE REMEDY FOR NON-CONFORMING PRODUCTS DURING THE WARRANTY PERIOD IS LIMITED TO REPAIR, REPLACEMENT OF OR REFUND FOR THE NON-CONFORMING PRODUCT(S) AT SELLER'S SOLE OPTION. THERE IS NO OBLIGATION TO REPAIR, REPLACE OR REFUND FOR PRODUCTS AS THE RESULT OF (I) ACCIDENT, DISASTER OR EVENT OF FORCE MAJEURE, (II) MISUSE, FAULT OR NEGLIGENCE OF OR BY BUYER, (III) USE OF THE PRODUCTS IN A MANNER FOR WHICH THEY WERE NOT DESIGNED, OR (IV) IMPROPER STORAGE AND HANDLING OF THE PRODUCTS. Unless otherwise expressly stated on the Product or in the documentation accompanying the Product, the Product is intended for research only and is not to be used for any other purpose, including without limitation, unauthorized commercial uses, in vitro diagnostic uses, ex vivo or in vivo therapeutic uses, or any type of consumption by or application to human or animals.