

CD14 Monoclonal Antibody (TuK4), Pacific Blue™

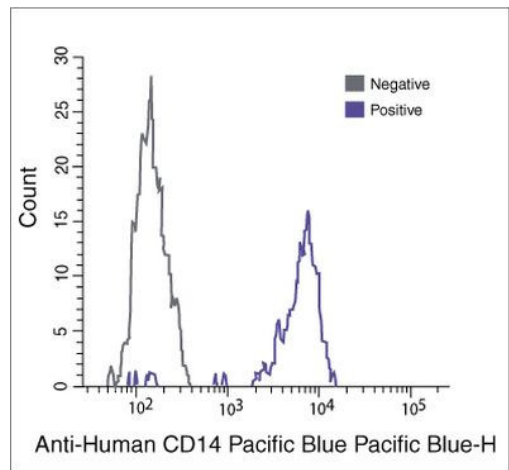
Product Details	
Size	500 µL
Species Reactivity	Human
Published Species	Human, Rhesus monkey
Host/Isotype	Mouse / IgG2a
Class	Monoclonal
Type	Antibody
Clone	TuK4
Conjugate	Pacific Blue™
Excitation/Emission Max	404/455 nm
Immunogen	Human CD14
Form	Liquid
Purification	purified
Storage buffer	PBS with 4mg/mL BSA
Contains	0.1% sodium azide
Storage conditions	4° C, store in dark
RRID	AB_10373537

Applications	Tested Dilution	Publications
Immunocytochemistry (ICC/IF)	-	2 Publications
Flow Cytometry (Flow)	Assay-Dependent	15 Publications
Miscellaneous PubMed (Misc)	-	3 Publications

Product Specific Information

Our Pacific Blue™ dye is optimally excited by the violet laser and conjugates of this dye are strongly fluorescent even at neutral pH. Pacific Blue™ and Pacific Orange™ dye conjugates can be simultaneously excited at 405 nm and emit at 455 nm and 551 nm, respectively, facilitating two-color analysis.

Product Images For CD14 Monoclonal Antibody (TuK4), Pacific Blue™



CD14 Antibody (MHCD1428) in Flow

Human peripheral blood monocytes stained using Pacific Blue Pacific Blue-H fluorochrome conjugates of anti-human CD14 monoclonal antibody (clone TuK4). The negative control profiles represent unstained cells.

[View more figures on thermofisher.com](https://www.thermofisher.com)

Immunocytochemistry (2)

<p>Mucosal immunology</p> <p>Immunization with Ty21a live oral typhoid vaccine elicits crossreactive multifunctional CD8+ T-cell responses against Salmonella enterica serovar Typhi, S. Paratyphi A, and S. Paratyphi B in humans.</p> <p>"MHCD1428 was used in Immunocytochemistry-immunofluorescence to suggest that Ty21a elicits multifunctional CMI responses against Salmonella that could be critical in clearing the infection."</p> <p>Authors: Wahid R,Fresnay S,Levine MM,Sztejn MB</p>	<p>Year 2015</p> <p>Species Human</p>
<p>Atherosclerosis</p> <p>Atorvastatin induces T cell proliferation by a telomerase reverse transcriptase (TERT) mediated mechanism.</p> <p>"MHCD1428 was used in flow cytometry and immunocytochemistry to study the effect of atorvastatin on telomerase activity in peripheral blood mononuclear cells and T-lymphocytes"</p> <p>Authors: Bennaceur K,Atwill M,Ai Zhrany N,Hoffmann J,Keavney B,Breault D,Richardson G,von Zglinicki T,Saretzki G, Spyridopoulos I</p>	<p>Year 2014</p> <p>Species Human</p>

Flow Cytometry (15)

<p>The Journal of clinical investigation</p> <p>IFN- with dasatinib broadens the immune repertoire in patients with chronic-phase chronic myeloid leukemia.</p> <p>"MHCD1428 was used in Immuno-assay to support the combination of IFN- with TKI therapy, as IFN- broadens the immune repertoire and restores immunological function."</p> <p>Authors: Huuhtanen J,Ilander M,Yadav B,Dufva OM,Lähteenmäki H,Kasanen T,Klievink J,Olsson-Strömberg U,Stentoft J,Richter J,Koskenvesa P,Höglund M,Söderlund S,Dreimane A,Porkka K,Gedde-Dahl T,Gjertsen BT,Stenke L,Myhr-Eriksson K,Markeväm B,Lübking A,Dimitrijevic A,Udby L,Bjerrum OW,Hjorth-Hansen H,Mustjoki S</p>	<p>Year 2022</p> <p>Species Human</p> <p>Dilution 1:20</p>
<p>Blood cancer journal</p> <p>ASXL1 mutations are associated with distinct epigenomic alterations that lead to sensitivity to venetoclax and azacytidine.</p> <p>"Published figure using CD14 monoclonal antibody (Product # MHCD1428) in Flow Cytometry"</p> <p>Authors: Rahmani NE,Ramachandra N,Sahu S,Gitego N,Lopez A,Pradhan K,Bhagat TD,Gordon-Mitchell S,Pena BR, Kazemi M,Rao K,Giricz O,Maqbool SB,Olea R,Zhao Y,Zhang J,Dolatshad H,Tittrea V,Tatwavedi D,Singh S,Lee J,Sun T,Steidl U,Shastri A,Inoue D,Abdel-Wahab O,Pellagatti A,Gavathiotis E,Boultonwood J,Verma A</p>	<p>Year 2021</p>

View more Flow references on thermofisher.com

More applications with references on thermofisher.com

Misc (3)

For Research Use Only. Not for use in diagnostic procedures. Not for resale without express authorization. Products are warranted to operate or perform substantially in conformance with published Product specifications in effect at the time of sale, as set forth in the Production documentation, specifications and/or accompanying package inserts ("Documentation"). No claim of suitability for use in applications regulated by FDA is made. The warranty provided herein is valid only when used by properly trained individuals. Unless otherwise stated in the Documentation, this warranty is limited to one year from date of shipment when the Product is subjected to normal, proper and intended usage. This warranty does not extend to anyone other than the Buyer. Any model or sample furnished to Buyer is merely illustrative of the general type and quality of goods and does not represent that any Product will conform to such model or sample. NO OTHER WARRANTIES, EXPRESS OR IMPLIED, ARE GRANTED INCLUDING WITHOUT LIMITATION, IMPLIED WARRANTIES OF MERCHANTABILITY, FITNESS FOR ANY PARTICULAR PURPOSE, OR NON-INFRINGEMENT. BUYER'S EXCLUSIVE REMEDY FOR NON-CONFORMING PRODUCTS DURING THE WARRANTY PERIOD IS LIMITED TO REPAIR, REPLACEMENT OF OR REFUND FOR THE NON-CONFORMING PRODUCT(S) AT SELLER'S SOLE OPTION. THERE IS NO OBLIGATION TO REPAIR, REPLACE OR REFUND FOR PRODUCTS AS THE RESULT OF (i) ACCIDENT, DISASTER OR EVENT OF FORCE MAJEURE, (ii) MISUSE, FAULT OR NEGLIGENCE OF OR BY BUYER, (iii) USE OF THE PRODUCTS IN A MANNER FOR WHICH THEY WERE NOT DESIGNED, OR (iv) IMPROPER STORAGE AND HANDLING OF THE PRODUCTS. Unless otherwise expressly stated on the Product or in the documentation accompanying the Product, the Product is intended for research only and is not to be used for any other purpose, including without limitation, unauthorized commercial uses, in vitro diagnostic uses, ex vivo or in vivo therapeutic uses, or any type of consumption by or application to human or animals.