

CD45 Monoclonal Antibody (HI30), Pacific Blue™

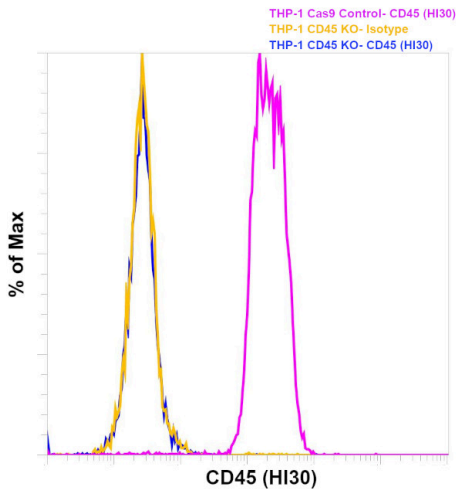
Product Details	
Size	500 µL
Species Reactivity	Human
Published Species	Human
Host/Isotype	Mouse / IgG1
Class	Monoclonal
Type	Antibody
Clone	HI30
Conjugate	Pacific Blue™
Excitation/Emission Max	404/455 nm
Immunogen	CD45 antigen
Form	Liquid
Concentration	0.2 mg/mL
Purification	purified
Storage buffer	PBS with 4mg/mL BSA
Contains	0.1% sodium azide
Storage conditions	4° C
RRID	AB_10375161

Applications	Tested Dilution	Publications
Flow Cytometry (Flow)	Assay-dependent	5 Publications
Miscellaneous PubMed (Misc)	-	1 Publication

Product Specific Information

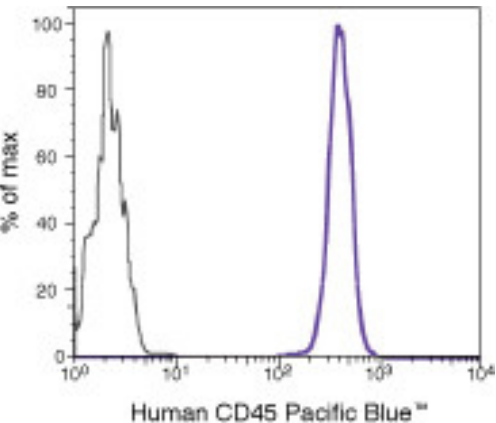
The Mouse anti-Human CD45 Monoclonal Antibody (mAb) recognizes the CD45 antigen<sup>1</sup>, which is expressed on all cells of hematopoietic origin with the exception of platelets and red blood cells and their immediate precursors. CD45 is considered to be a pan leukocyte marker.

For this Pacific Blue™ conjugate - Excitation/Peak Emission (nm): 405/455



**CD45 Antibody (MHCD4528)**

Antibody clone (HI30) specificity was demonstrated by CRISPR-Cas9 mediated knockout of target protein. Loss of signal was observed for target protein in HI30 KO cells (blue histogram) compared to the control Cas9 cells (pink histogram) using CD45 antibody (HI30). The Yellow histogram represents staining with the isotype control. {KO}



**CD45 Antibody (MHCD4528) in Flow**

Flow Cytometry analysis using a CD45 monoclonal antibody (Product # MHCD4528).

## Flow Cytometry (5)

<p><b>Cell stem cell</b></p> <p><b>The Rational Development of CD133-Targeting Immunotherapies for Glioblastoma.</b></p> <p>"MHCD4528 was used in Flow Cytometry to investigate if CD133-specific chimeric antigen receptor T cells may be a therapeutically tractable strategy to target CD133+ cancer stem cells in human glioblastoma or other treatment-resistant primary cancers."</p> <p>Authors: Vora P,Venugopal C,Salim SK,Tatari N,Bakhshinyan D,Singh M,Seyfrid M,Upreti D,Rentas S,Wong N,Williams R,Qazi MA,Chokshi C,Ding A,Subapanditha M,Savage N,Mahendram S,Ford E,Adile AA,McKenna D,McFarlane N,Huynh V,Wylie RG,Pan J,Bramson J,Hope K,Moffat J,Singh S</p>	<p><b>Year</b> 2020</p> <p><b>Species</b> Human</p>
<p><b>Cancers</b></p> <p><b>Impact of the Injection Site on Growth Characteristics, Phenotype and Sensitivity towards Cytarabine of Twenty Acute Leukaemia Patient-Derived Xenograft Models.</b></p> <p>"MHCD4528 was used in Flow cytometry/Cell sorting to highlight the need for well characterized platforms to ensure the meaningful interpretation of data generated using those powerful tools."</p> <p>Authors: Schueler J,Greve G,Lenhard D,Pantic M,Edinger A,Oswald E,Lübbert M</p>	<p><b>Year</b> 2020</p> <p><b>Species</b> Human</p>

[View more Flow references on thermofisher.com](#)

## Miscellaneous PubMed (1)

<p><b>Journal of biomedicine &amp; biotechnology</b></p> <p><b>Telomere attrition occurs during ex vivo expansion of human dental pulp stem cells.</b></p> <p>"MHCD4528 was used in flow cytometry to characterize stem cells isolated and expanded from the human dental pulp"</p> <p>Authors: Mokry J,Soukup T,Micuda S,Karbanova J,Visek B,Brcakova E,Suchanek J,Bouchal J,Vokurkova D,Ivancakova R</p>	<p><b>Year</b> 2011</p> <p><b>Species</b> Human</p>
--	---

## More applications with references on thermofisher.com

For Research Use Only. Not for use in diagnostic procedures. Not for resale without express authorization. Products are warranted to operate or perform substantially in conformance with published Product specifications in effect at the time of sale, as set forth in the Production documentation, specifications and/or accompanying package inserts ("Documentation"). No claim of suitability for use in applications regulated by FDA is made. The warranty provided herein is valid only when used by properly trained individuals. Unless otherwise stated in the Documentation, this warranty is limited to one year from date of shipment when the Product is subjected to normal, proper and intended usage. This warranty does not extend to anyone other than the Buyer. Any model or sample furnished to Buyer is merely illustrative of the general type and quality of goods and does not represent that any Product will conform to such model or sample. NO OTHER WARRANTIES, EXPRESS OR IMPLIED, ARE GRANTED INCLUDING WITHOUT LIMITATION, IMPLIED WARRANTIES OF MERCHANTABILITY, FITNESS FOR ANY PARTICULAR PURPOSE, OR NON INFRINGEMENT. BUYER'S EXCLUSIVE REMEDY FOR NON-CONFORMING PRODUCTS DURING THE WARRANTY PERIOD IS LIMITED TO REPAIR, REPLACEMENT OF OR REFUND FOR THE NON-CONFORMING PRODUCT(S) AT SELLER'S SOLE OPTION. THERE IS NO OBLIGATION TO REPAIR, REPLACE OR REFUND FOR PRODUCTS AS THE RESULT OF (I) ACCIDENT, DISASTER OR EVENT OF FORCE MAJEURE, (II) MISUSE, FAULT OR NEGLIGENCE OF OR BY BUYER, (III) USE OF THE PRODUCTS IN A MANNER FOR WHICH THEY WERE NOT DESIGNED, OR (IV) IMPROPER STORAGE AND HANDLING OF THE PRODUCTS. Unless otherwise expressly stated on the Product or in the documentation accompanying the Product, the Product is intended for research only and is not to be used for any other purpose, including without limitation, unauthorized commercial uses, in vitro diagnostic uses, ex vivo or in vivo therapeutic uses, or any type of consumption by or application to human or animals.