

Phospho-SRC (Tyr418) Polyclonal Antibody

Product Details	
Size	100 µL
Species Reactivity	Chicken, Human, Mouse
Published Species	Mouse
Host/Isotype	Rabbit / IgG
Class	Polyclonal
Type	Antibody
Conjugate	Unconjugated
Immunogen	Synthetic peptide derived from human Src that contains phosphorylated tyrosine 418.
Form	Liquid
Purification	Antigen affinity chromatography
Storage buffer	Dulbecco's PBS, pH 7.3, with 1mg/mL BSA, 50% glycerol
Contains	0.05% sodium azide
Storage Conditions	-20° C, Avoid Freeze/Thaw Cycles
RRID	AB_325634

Applications	Tested Dilution	Publications
Western Blot (WB)	Assay-Dependent	1 Publication

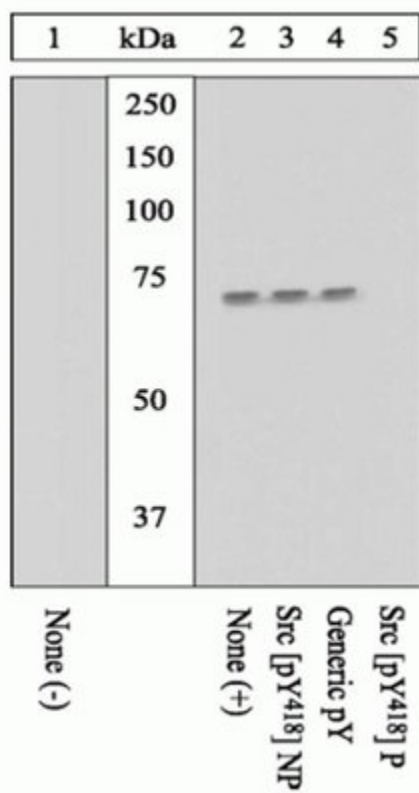
Product Specific Information

OPA1-03091 detects p-Src from human, mouse, and chicken tissues and cells.

OPA1-03091 has been successfully used in Western blot procedures. By Western blot, this antibody detects an ~60 kDa protein representing p-Src from platelet-derived growth factor (PDGF) treated NIH-3T3 cell extract. Previous lots of this antibody have been used in immunostaining.

OPA1-03091 immunizing phosphopeptide was derived from human Src that contains phosphorylated tyrosine 418.

Product Images For Phospho-SRC (Tyr418) Polyclonal Antibody



Phospho-SRC (Tyr418) Antibody (OPA1-03091) in WB

Western blot analysis using a Phospho-SRC pTyr418 polyclonal antibody (Product # OPA1-03091).

1 Reference

Western Blot (1)

Molecular medicine reports

cMaf inducing protein inhibits cofilin1 activity and alters podocyte cytoskeleton organization.

"OPA1-03091 was used in Western Blotting to investigate c-Maf inducing protein-induced proximal signalling."

Authors: Yu L, Ye J, Liu Q, Feng J, Gu X, Sun Q, Lu G

Species
Mouse

Dilution
1:750

Year
2017

For Research Use Only. Not for use in diagnostic procedures. Not for resale without express authorization. Products are warranted to operate or perform substantially in conformance with published Product specifications in effect at the time of sale, as set forth in the Production documentation, specifications and/or accompanying package inserts ("Documentation"). No claim of suitability for use in applications regulated by FDA is made. The warranty provided herein is valid only when used by properly trained individuals. Unless otherwise stated in the Documentation, this warranty is limited to one year from date of shipment when the Product is subjected to normal, proper and intended usage. This warranty does not extend to anyone other than the Buyer. Any model or sample furnished to Buyer is merely illustrative of the general type and quality of goods and does not represent that any Product will conform to such model or sample. NO OTHER WARRANTIES, EXPRESS OR IMPLIED, ARE GRANTED INCLUDING WITHOUT LIMITATION, IMPLIED WARRANTIES OF MERCHANTABILITY, FITNESS FOR ANY PARTICULAR PURPOSE, OR NON INFRINGEMENT. BUYER'S EXCLUSIVE REMEDY FOR NON-CONFORMING PRODUCTS DURING THE WARRANTY PERIOD IS LIMITED TO REPAIR, REPLACEMENT OF OR REFUND FOR THE NON-CONFORMING PRODUCT(S) AT SELLER'S SOLE OPTION. THERE IS NO OBLIGATION TO REPAIR, REPLACE OR REFUND FOR PRODUCTS AS THE RESULT OF (I) ACCIDENT, DISASTER OR EVENT OF FORCE MAJEURE, (II) MISUSE, FAULT OR NEGLIGENCE OF OR BY BUYER, (III) USE OF THE PRODUCTS IN A MANNER FOR WHICH THEY WERE NOT DESIGNED, OR (IV) IMPROPER STORAGE AND HANDLING OF THE PRODUCTS. Unless otherwise expressly stated on the Product or in the documentation accompanying the Product, the Product is intended for research only and is not to be used for any other purpose, including without limitation, unauthorized commercial uses, in vitro diagnostic uses, ex vivo or in vivo therapeutic uses, or any type of consumption by or application to human or animals.