

NMDAR1 Polyclonal Antibody

Product Details	
Size	25 µg
Species Reactivity	Mouse, Rat
Host/Isotype	Rabbit / IgG
Class	Polyclonal
Type	Antibody
Conjugate	Unconjugated
Immunogen	Synthetic peptide corresponding to amino acid residues specific to the NR1 subunit of rat GRIN1, C1 splice variant insert conjugated to KLH
Form	Lyophilized
Concentration	0.5 mg/mL
Purification	Affinity chromatography
Contains	no preservative
Storage conditions	-20° C, Avoid Freeze/Thaw Cycles
RRID	AB_325647

Applications	Tested Dilution	Publications
Western Blot (WB)	1:1,000	-
Immunohistochemistry (IHC)	1:1,000-1:2,000	-
Immunohistochemistry (Frozen) (IHC (F))	1:1,000-1:2,000	-

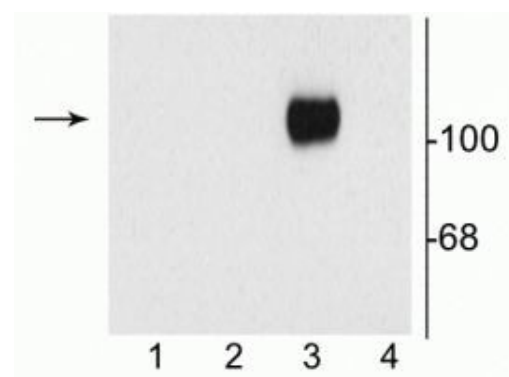
Product Specific Information

This antibody is predicted to react with bovine, canine, human and non-human primate based on 100% sequence homology.

In Western blot, this antibody detects an ~100 kDa protein representing the NR1 C1 splice variant from rat brain homogenate. It shows no cross-reactivity with the NR1 N1, C2, or C2 splice variants.

Reconstitute with 50 µL of PBS.

Product Images For NMDAR1 Polyclonal Antibody



NMDAR1 Antibody (OPA1-04012) in WB

Western blot of NMDAR1 in HEK 293 cells (10 µg). Showing specific immunolabeling of a ~120 kDa band corresponding to NR1 subunit of the NMDAR1 polyclonal antibody (Product # OPA1-04012) receptor containing the C1 splice variant insert in lane 3. HEK cells without NR1 expression (lane 1); NR1 subunit containing only the C2 Insert (lane 2); NR1 subunit containing the C1 and C2 Insert (lane 3); NR1 subunit containing the N1 and C2 insert (lane 4).

For Research Use Only. Not for use in diagnostic procedures. Not for resale without express authorization. Products are warranted to operate or perform substantially in conformance with published Product specifications in effect at the time of sale, as set forth in the Production documentation, specifications and/or accompanying package inserts ("Documentation"). No claim of suitability for use in applications regulated by FDA is made. The warranty provided herein is valid only when used by properly trained individuals. Unless otherwise stated in the Documentation, this warranty is limited to one year from date of shipment when the Product is subjected to normal, proper and intended usage. This warranty does not extend to anyone other than the Buyer. Any model or sample furnished to Buyer is merely illustrative of the general type and quality of goods and does not represent that any Product will conform to such model or sample. NO OTHER WARRANTIES, EXPRESS OR IMPLIED, ARE GRANTED INCLUDING WITHOUT LIMITATION, IMPLIED WARRANTIES OF MERCHANTABILITY, FITNESS FOR ANY PARTICULAR PURPOSE, OR NON INFRINGEMENT. BUYER'S EXCLUSIVE REMEDY FOR NON-CONFORMING PRODUCTS DURING THE WARRANTY PERIOD IS LIMITED TO REPAIR, REPLACEMENT OF OR REFUND FOR THE NON-CONFORMING PRODUCT(S) AT SELLER'S SOLE OPTION. THERE IS NO OBLIGATION TO REPAIR, REPLACE OR REFUND FOR PRODUCTS AS THE RESULT OF (I) ACCIDENT, DISASTER OR EVENT OF FORCE MAJEURE, (II) MISUSE, FAULT OR NEGLIGENCE OF OR BY BUYER, (III) USE OF THE PRODUCTS IN A MANNER FOR WHICH THEY WERE NOT DESIGNED, OR (IV) IMPROPER STORAGE AND HANDLING OF THE PRODUCTS. Unless otherwise expressly stated on the Product or in the documentation accompanying the Product, the Product is intended for research only and is not to be used for any other purpose, including without limitation, unauthorized commercial uses, in vitro diagnostic uses, ex vivo or in vivo therapeutic uses, or any type of consumption by or application to human or animals.