

Phospho-GluR1 (Ser845) Polyclonal Antibody

Product Details	
Size	150 µL
Species Reactivity	Mouse, Rat
Published Species	Rat, Mouse
Host/Isotype	Rabbit / IgG
Class	Polyclonal
Type	Antibody
Conjugate	Unconjugated
Immunogen	Synthetic phospho-peptide corresponding to amino acid residues surrounding Ser845 of rat GRIA1 conjugated to KLH
Form	Liquid
Purification	Affinity chromatography
Storage buffer	0.01M HEPES, pH 7.5, with 0.15M NaCl, 100µg/mL BSA, 50% glycerol
Contains	no preservative
Storage conditions	-20° C, Avoid Freeze/Thaw Cycles
RRID	AB_325368

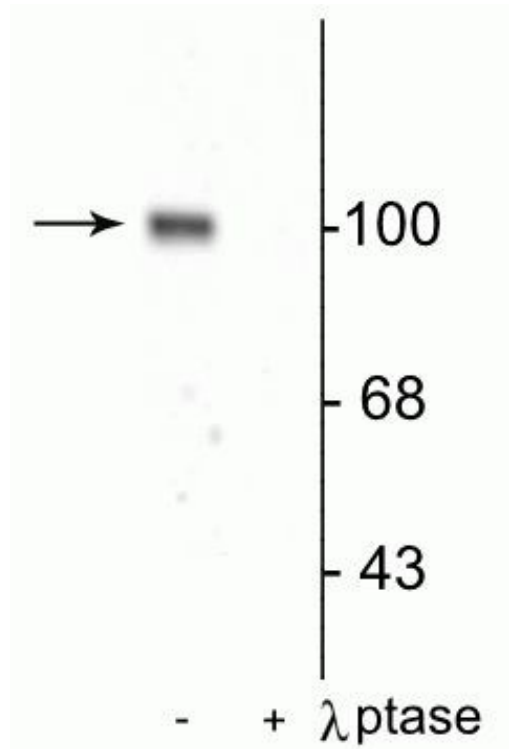
Applications	Tested Dilution	Publications
Western Blot (WB)	1:1,000	2 Publications
Immunohistochemistry (IHC)	1:1,000	-
Immunohistochemistry (Frozen) (IHC (F))	1:1,000	-
Miscellaneous PubMed (Misc)	-	2 Publications

Product Specific Information

This antibody is predicted to react with human, mouse and non-human primate based on 100% sequence homology.

In Western blot, this antibody detects a ~100 kDa protein representing phospho-GluR1 (pSer845) in rat brain lysate. Immunolabeling is blocked by the phosphopeptide used as the antigen but not by the corresponding dephosphopeptide.

Product Images For Phospho-GluR1 (Ser845) Polyclonal Antibody



Phospho-GluR1 (Ser845) Antibody (OPA1-04118) in WB

Western blot of GluR1 in rat hippocampal lysate showing specific immunolabeling of a ~100 kDa band corresponding to Phospho-GluR1 (Ser845) polyclonal antibody (Product # OPA1-04118) in the first lane (-). Phosphospecificity is shown in the second lane (+) where immunolabeling is completely eliminated by blot treatment with lambda phosphatase (1,200 units for 30 min).

Western Blot (2)

The Journal of cell biology

KIF13A drives AMPA receptor synaptic delivery for long-term potentiation via endosomal remodeling.

"Published figure using Phospho-GluR1 (Ser845) polyclonal antibody (Product # OPA1-04118) in Western Blot"

Authors: Gutiérrez Y,López-García S,Lario A,Gutiérrez-Eisman S,Delevoye C,Esteban JA

Year
2021

Nutrients

Sex-Specific Anxiety and Prefrontal Cortex Glutamatergic Dysregulation Are Long-Term Consequences of Pre-and Postnatal Exposure to Hypercaloric Diet in a Rat Model.

"OPA1-04118 was used in Western Blotting to conclude that a hypercaloric maternal diet induces sex-dependent anxiety, associated with alterations in both glutamatergic and cannabinoid signaling in the prefrontal cortex, which are accentuated with the continuation of the palatable diet during the life of the offspring."

Authors: Rivera P,Tovar R,Ramírez-López MT,Navarro JA,Vargas A,Suárez J,Fonseca FR

Year
2020

Species
Rat

Dilution
1:200

Miscellaneous PubMed (2)

European neuropsychopharmacology : the journal of the European College of Neuropsychopharmacology

Cocaine-induced behavioral sensitization decreases the expression of endocannabinoid signaling-related proteins in the mouse hippocampus.

"OPA1-04118 was used in western blot to determine if the hippocampal gene/protein expression of relevant glutamate signaling components, cannabinoid type 1 receptor, and endocannabinoid metabolic enzymes were altered following acute and/or repeated cocaine administration"

Authors: Blanco E,Galeano P,Palomino A,Pavón FJ,Rivera P,Serrano A,Alen F,Rubio L,Vargas A,Castilla-Ortega E,Decara J,Bilbao A,de Fonseca FR,Suárez J

Year
2016

Species
Mouse

Dilution
1:500

Psychopharmacology

Attenuation of cocaine-induced conditioned locomotion is associated with altered expression of hippocampal glutamate receptors in mice lacking LPA1 receptors.

"OPA1-04118 was used in western blot to investigate the contribution of LPA1 receptors to drug abuse"

Authors: Blanco E,Bilbao A,Luque-Rojas MJ,Palomino A,Bermúdez-Silva FJ,Suárez J,Santín LJ,Estivill-Torrús G,Gutiérrez A,Campos-Sandoval JA,Alonso-Carrión FJ,Márquez J,de Fonseca FR

Year
2012

Species
Mouse

Dilution
1:850

For Research Use Only. Not for use in diagnostic procedures. Not for resale without express authorization. Products are warranted to operate or perform substantially in conformance with published Product specifications in effect at the time of sale, as set forth in the Production documentation, specifications and/or accompanying package inserts ("Documentation"). No claim of suitability for use in applications regulated by FDA is made. The warranty provided herein is valid only when used by properly trained individuals. Unless otherwise stated in the Documentation, this warranty is limited to one year from date of shipment when the Product is subjected to normal, proper and intended usage. This warranty does not extend to anyone other than the Buyer. Any model or sample furnished to Buyer is merely illustrative of the general type and quality of goods and does not represent that any Product will conform to such model or sample. NO OTHER WARRANTIES, EXPRESS OR IMPLIED, ARE GRANTED INCLUDING WITHOUT LIMITATION, IMPLIED WARRANTIES OF MERCHANTABILITY, FITNESS FOR ANY PARTICULAR PURPOSE, OR NON-INFRINGEMENT. BUYER'S EXCLUSIVE REMEDY FOR NON-CONFORMING PRODUCTS DURING THE WARRANTY PERIOD IS LIMITED TO REPAIR, REPLACEMENT OF OR REFUND FOR THE NON-CONFORMING PRODUCT(S) AT SELLER'S SOLE OPTION. THERE IS NO OBLIGATION TO REPAIR, REPLACE OR REFUND FOR PRODUCTS AS THE RESULT OF (i) ACCIDENT, DISASTER OR EVENT OF FORCE MAJEURE, (ii) MISUSE, FAULT OR NEGLIGENCE OF OR BY BUYER, (iii) USE OF THE PRODUCTS IN A MANNER FOR WHICH THEY WERE NOT DESIGNED, OR (iv) IMPROPER STORAGE AND HANDLING OF THE PRODUCTS. Unless otherwise expressly stated on the Product or in the documentation accompanying the Product, the Product is intended for research only and is not to be used for any other purpose, including without limitation, unauthorized commercial uses, in vitro diagnostic uses, ex vivo or in vivo therapeutic uses, or any type of consumption by or application to human or animals.