

Sortilin Polyclonal Antibody

Product Details	
Size	500 µg
Species Reactivity	Human, Mouse, Rat
Host/Isotype	Rabbit / IgG
Class	Polyclonal
Type	Antibody
Conjugate	Unconjugated
Immunogen	A synthetic peptide from rat Sortilin conjugated to blue carrier protein was used as the antigen.
Form	Lyophilized
Concentration	1 mg/mL
Storage conditions	Store at 4°C short term. For long term storage, store at -20°C, avoiding freeze/thaw cycles. Glycerol (1:1) may be added for added stability.
RRID	AB_1960716

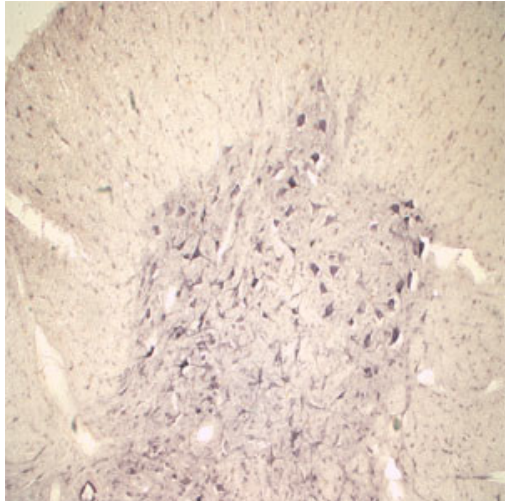
Applications	Tested Dilution	Publications
Western Blot (WB)	1-50 µg/mL	-
Immunohistochemistry (IHC)	10-50 µg/mL	-

Product Specific Information

Glycerol (1:1) may be added for additional stability.

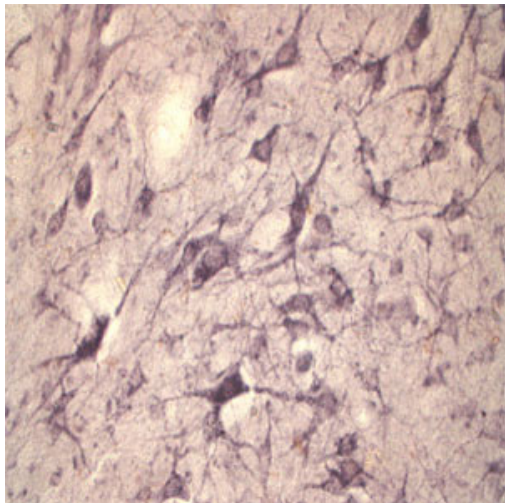
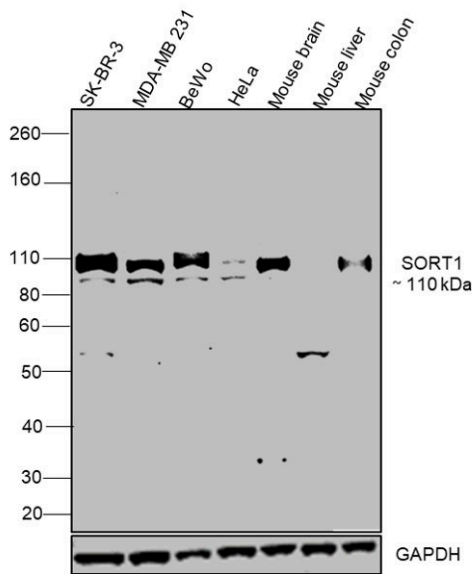
Reconstitute in 500 µL of sterile water.

Product Images For Sortilin Polyclonal Antibody



Sortilin Antibody (OSS00041G) in IHC
Immunohistochemistry analysis performed on rat spinal cord using Sortilin Polyclonal Antibody (Product #OSS00041G) at a concentration of 10 µg/mL. Pre-absorption of the antibody with the immunising peptide completely abolishes the immunostaining (not shown).

Sortilin Antibody (OSS00041G)
Antibody specificity was demonstrated by detection of differential basal expression of the target across cell lines owing to their inherent genetic constitution. Higher expression of SORT1 was observed in Mouse brain as compared to Mouse liver using Sortilin Polyclonal Antibody (Product # OSS00041G) in western blot. {RE}



Sortilin Antibody (OSS00041G) in IHC
Immunohistochemistry analysis performed on rat spinal cord using Sortilin Polyclonal Antibody (Product #OSS00041G) at a concentration of 10 µg/mL. Pre-absorption of the antibody with the immunising peptide completely abolishes the immunostaining (not shown).

View more figures on thermofisher.com

For Research Use Only. Not for use in diagnostic procedures. Not for resale without express authorization. Products are warranted to operate or perform substantially in conformance with published Product specifications in effect at the time of sale, as set forth in the Production documentation, specifications and/or accompanying package inserts ("Documentation"). No claim of suitability for use in applications regulated by FDA is made. The warranty provided herein is valid only when used by properly trained individuals. Unless otherwise stated in the Documentation, this warranty is limited to one year from date of shipment when the Product is subjected to normal, proper and intended usage. This warranty does not extend to anyone other than the Buyer. Any model or sample furnished to Buyer is merely illustrative of the general type and quality of goods and does not represent that any Product will conform to such model or sample. NO OTHER WARRANTIES, EXPRESS OR IMPLIED, ARE GRANTED INCLUDING WITHOUT LIMITATION, IMPLIED WARRANTIES OF MERCHANTABILITY, FITNESS FOR ANY PARTICULAR PURPOSE, OR NON INFRINGEMENT. BUYER'S EXCLUSIVE REMEDY FOR NON-CONFORMING PRODUCTS DURING THE WARRANTY PERIOD IS LIMITED TO REPAIR, REPLACEMENT OF OR REFUND FOR THE NON-CONFORMING PRODUCT(S) AT SELLER'S SOLE OPTION. THERE IS NO OBLIGATION TO REPAIR, REPLACE OR REFUND FOR PRODUCTS AS THE RESULT OF (I) ACCIDENT, DISASTER OR EVENT OF FORCE MAJEURE, (II) MISUSE, FAULT OR NEGLIGENCE OF OR BY BUYER, (III) USE OF THE PRODUCTS IN A MANNER FOR WHICH THEY WERE NOT DESIGNED, OR (IV) IMPROPER STORAGE AND HANDLING OF THE PRODUCTS. Unless otherwise expressly stated on the Product or in the documentation accompanying the Product, the Product is intended for research only and is not to be used for any other purpose, including without limitation, unauthorized commercial uses, in vitro diagnostic uses, ex vivo or in vivo therapeutic uses, or any type of consumption by or application to human or animals.