

VEGF Polyclonal Antibody, Biotin

Product Details

Size	100 µg
Species Reactivity	Human
Host/Isotype	Rabbit / IgG
Class	Polyclonal
Type	Antibody
Conjugate	Biotin
Immunogen	Human VEGF-A
Form	Liquid
Concentration	0.5 mg/mL
Purification	Protein A/G
Storage buffer	PBS with 4% BSA
Contains	proprietary preservative
Storage conditions	-20°C
RRID	AB_2539847

Applications	Tested Dilution	Publications
Western Blot (WB)	1 µg/mL	-
Immunocytochemistry (ICC/IF)	1:50-1:200	-
ELISA (ELISA)	0.125-0.5 µg/mL	-

Product Specific Information

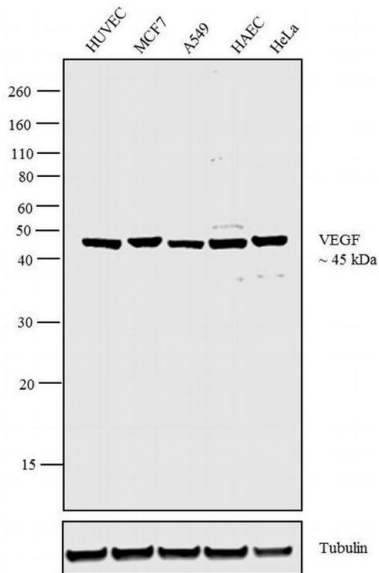
The VEGF-A monoclonal antibody clone # 16F1 (Product # M808) has successfully been paired as the coating antibody in a sandwich ELISA with detection antibody P802B (biotinylated conjugate of Product # P802).

Typical dilutions for sandwich ELISA include 1 µg/mL for coating and 0.125-0.5 µg/mL for detection.

Product Images For VEGF Polyclonal Antibody, Biotin

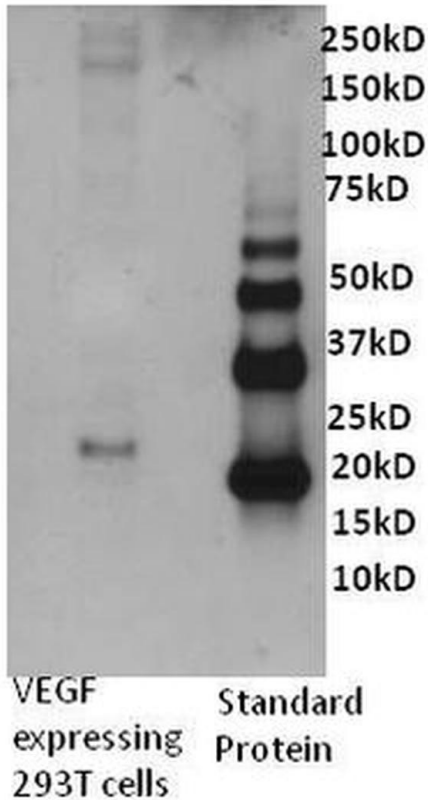
VEGF Antibody (P802B) in WB

Western blot analysis was performed on whole cell extracts (30 µg lysate) of HUVEC (Lane 1), MCF7 (Lane 2), A549 (Lane 3), HAEC (Lane 4) and HeLa (Lane 5). The blot was probed with Rabbit Anti- VEGF Polyclonal Antibody (Product # P802B, 1 µg/mL). A 45 kDa band corresponding to VEGF was observed across the cell lines tested. Known quantity of protein samples were electrophoresed using Novex® NuPAGE® 4-12 % Bis-Tris gel (Product # NP0321BOX), XCell SureLock™ Electrophoresis System (Product # EI0002) and Novex® Sharp Pre-Stained Protein Standard (Product # LC5800). Resolved proteins were then transferred onto a nitrocellulose membrane with iBlot® 2 Dry Blotting System (Product # IB21001). The membrane was probed with the relevant primary antibody following blocking with 5 % skimmed milk. This is followed by incubating the membrane with Poly-HRP Streptavidin (Product # N200, 1:10,000 dilution). Chemiluminescent detection was performed using Pierce™ ECL Western Blotting Substrate (Product # 32106).



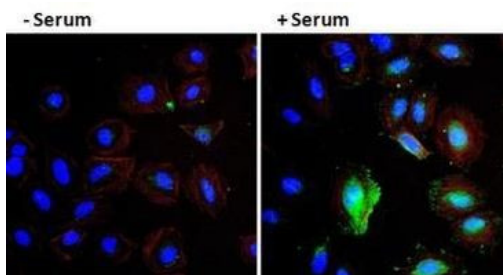
VEGF Antibody (P802B) in WB

Western blot analysis of Human VEGF was performed by loading 0.5 µg of VEGF transfected 293T cell culture supernatant and recombinant human VEGF onto a 4-12% Tris-HCl polyacrylamide gel. Proteins were transferred to a PVDF membrane and blocked with 3% BSA/TBST for at least 1 hour. The membrane was probed with a human VEGF polyclonal antibody (Product # P802) at a dilution of 1 µg/mL overnight at 4°C on a rocking platform, washed in TBS-0.1% Tween 20 and probed with a goat anti- rabbit-HRP secondary antibody (Product # 31460) at a dilution of 1:15,000 for at least one hour. Chemiluminescent detection was performed using SuperSignal West Dura (Product # 34075).



VEGF Antibody (P802B) in ICC/IF

Immunofluorescent analysis of VEGF (green) in HeLa cells either serum starved (left panel) or treated with serum (right panel) for 30 minutes. Formalin fixed cells were permeabilized with 0.1% Triton X-100 in TBS for 10 minutes at room temperature and blocked with 1% Blocker BSA (Product # 37525) for 15 minutes at room temperature. Cells were probed with a VEGF polyclonal antibody (Product # P802) at a dilution of 1:50 for at least 1 hour at room temperature, washed with PBS, and incubated with DyLight 488 goat anti-rabbit IgG secondary antibody (Product # 35552) at a dilution of 1:400 for 30 minutes at room temperature. F-Actin (red) was stained with DyLight 554 Phalloidin (Product # 21834) and nuclei (blue) were stained with Hoechst 33342 dye (Product # 62249). Images were taken on a Thermo Scientific ArrayScan at 20X magnification.



View more figures on thermofisher.com

For Research Use Only. Not for use in diagnostic procedures. Not for resale without express authorization. Products are warranted to operate or perform substantially in conformance with published Product specifications in effect at the time of sale, as set forth in the Production documentation, specifications and/or accompanying package inserts ("Documentation"). No claim of suitability for use in applications regulated by FDA is made. The warranty provided herein is valid only when used by properly trained individuals. Unless otherwise stated in the Documentation, this warranty is limited to one year from date of shipment when the Product is subjected to normal, proper and intended usage. This warranty does not extend to anyone other than the Buyer. Any model or sample furnished to Buyer is merely illustrative of the general type and quality of goods and does not represent that any Product will conform to such model or sample. NO OTHER WARRANTIES, EXPRESS OR IMPLIED, ARE GRANTED INCLUDING WITHOUT LIMITATION, IMPLIED WARRANTIES OF MERCHANTABILITY, FITNESS FOR ANY PARTICULAR PURPOSE, OR NON INFRINGEMENT. BUYER'S EXCLUSIVE REMEDY FOR NON-CONFORMING PRODUCTS DURING THE WARRANTY PERIOD IS LIMITED TO REPAIR, REPLACEMENT OF OR REFUND FOR THE NON-CONFORMING PRODUCT(S) AT SELLER'S SOLE OPTION. THERE IS NO OBLIGATION TO REPAIR, REPLACE OR REFUND FOR PRODUCTS AS THE RESULT OF (I) ACCIDENT, DISASTER OR EVENT OF FORCE MAJEURE, (II) MISUSE, FAULT OR NEGLIGENCE OF OR BY BUYER, (III) USE OF THE PRODUCTS IN A MANNER FOR WHICH THEY WERE NOT DESIGNED, OR (IV) IMPROPER STORAGE AND HANDLING OF THE PRODUCTS. Unless otherwise expressly stated on the Product or in the documentation accompanying the Product, the Product is intended for research only and is not to be used for any other purpose, including without limitation, unauthorized commercial uses, in vitro diagnostic uses, ex vivo or in vivo therapeutic uses, or any type of consumption by or application to human or animals.