

Cyclophilin 40 Polyclonal Antibody

Product Details	
Size	100 µg
Species Reactivity	Dog, Hamster, Human, Mouse, Rat
Published Species	Rat, Mouse, Human
Host/Isotope	Rabbit / IgG
Class	Polyclonal
Type	Antibody
Conjugate	Unconjugated
Immunogen	Synthetic peptide corresponding to residues S(42) G N P L V Y L D V D A N(54) C of mature human CyPD.
Form	Liquid
Concentration	1 mg/mL
Purification	Antigen affinity chromatography
Storage buffer	PBS with 1mg/mL BSA
Contains	0.05% sodium azide
Storage Conditions	-20° C, Avoid Freeze/Thaw Cycles
RRID	AB_2169135

Applications	Tested Dilution	Publications
Western Blot (WB)	1 µg/mL	12 Publications

Product Specific Information

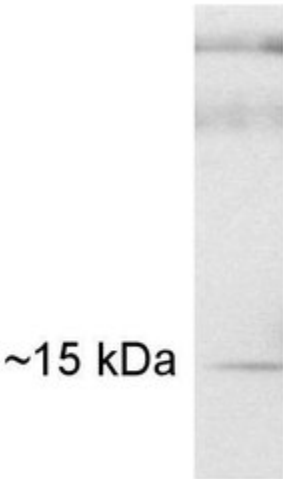
PA1-028 detects cyclophilin D (CyPD) in rat, hamster, canine, mouse, and human tissues.

PA1-028 has been successfully used in Western blot procedures. By Western blot, this antibody detects a ~15 kDa protein in rat liver and heart extract, and a ~37 kDa in rat brain extract.

The PA1-028 immunogen is a synthetic peptide corresponding to residues S(42) G N P L V Y L D V D A N(54) C of mature human CyPD. This peptide (Cat. # PEP-104) is available for use in neutralization and control experiments.

Product Images For Cyclophilin 40 Polyclonal Antibody

Fig. 1



Cyclophilin 40 Antibody (PA1-028) in WB

Figure 1 shows a Western blot of CyPD on rat heart extract using Product # PA1-028.

Fig. 2



Cyclophilin 40 Antibody (PA1-028) in WB

Figure 2 shows a Western blot of CyPD on rat brain extract using Product # PA1-028.

[View more figures on thermofisher.com](http://thermofisher.com)

Western Blot (12)

Human molecular genetics

Loss of hepatic LRPPRC alters mitochondrial bioenergetics, regulation of permeability transition and trans-membrane ROS diffusion.

"PA1-028 was used in Western Blotting to investigate the impact of the French-Canadian variant of Leigh Syndrome in the liver."

Authors: Cuillerier A, Honarmand S, Cadete VJJ, Ruiz M, Forest A, Deschênes S, Beauchamp C, Charron G, Rioux JD, Desrosiers C, Shoubridge EA, Burelle Y

Species
Mouse
Not Applicable

Dilution
1:1000
Not Cited

Year
2017

Archives of toxicology

Mitochondrial permeability transition and its regulatory components are implicated in apoptosis of primary cultures of rat proximal tubular cells exposed to lead.

"PA1-028 was used in western blot to expand our understanding of the mechanisms involved in Pb-induced mitochondrial apoptosis"

Authors: Liu G, Wang ZK, Wang ZY, Yang DB, Liu ZP, Wang L

Species
Rat

Dilution
1:1000

Year
2016

[View more WB references on thermofisher.com](#)

More applications with references on thermofisher.com

For Research Use Only. Not for use in diagnostic procedures. Not for resale without express authorization. Products are warranted to operate or perform substantially in conformance with published Product specifications in effect at the time of sale, as set forth in the Production documentation, specifications and/or accompanying package inserts ("Documentation"). No claim of suitability for use in applications regulated by FDA is made. The warranty provided herein is valid only when used by properly trained individuals. Unless otherwise stated in the Documentation, this warranty is limited to one year from date of shipment when the Product is subjected to normal, proper and intended usage. This warranty does not extend to anyone other than the Buyer. Any model or sample furnished to Buyer is merely illustrative of the general type and quality of goods and does not represent that any Product will conform to such model or sample. NO OTHER WARRANTIES, EXPRESS OR IMPLIED, ARE GRANTED INCLUDING WITHOUT LIMITATION, IMPLIED WARRANTIES OF MERCHANTABILITY, FITNESS FOR ANY PARTICULAR PURPOSE, OR NON INFRINGEMENT. BUYER'S EXCLUSIVE REMEDY FOR NON-CONFORMING PRODUCTS DURING THE WARRANTY PERIOD IS LIMITED TO REPAIR, REPLACEMENT OF OR REFUND FOR THE NON-CONFORMING PRODUCT(S) AT SELLER'S SOLE OPTION. THERE IS NO OBLIGATION TO REPAIR, REPLACE OR REFUND FOR PRODUCTS AS THE RESULT OF (I) ACCIDENT, DISASTER OR EVENT OF FORCE MAJEURE, (II) MISUSE, FAULT OR NEGLIGENCE OF OR BY BUYER, (III) USE OF THE PRODUCTS IN A MANNER FOR WHICH THEY WERE NOT DESIGNED, OR (IV) IMPROPER STORAGE AND HANDLING OF THE PRODUCTS. Unless otherwise expressly stated on the Product or in the documentation accompanying the Product, the Product is intended for research only and is not to be used for any other purpose, including without limitation, unauthorized commercial uses, in vitro diagnostic uses, ex vivo or in vivo therapeutic uses, or any type of consumption by or application to human or animals.